

The Murmansk region

It was established on May 28, 1938



TERRITORY

144.9 thousand km².



The Murmansk region is situated at the Kola Peninsula to the North of the Polar Circle.

The length from West to East is 550 km, from North to South is 440 km.

POPULATION

872 thousand people.

92% of them are city inhabitants.

There are **42** administrative formations in the region.

The biggest cities are:

Murmansk – **329** thousand people;

Apatity – **63.7** thousand people;

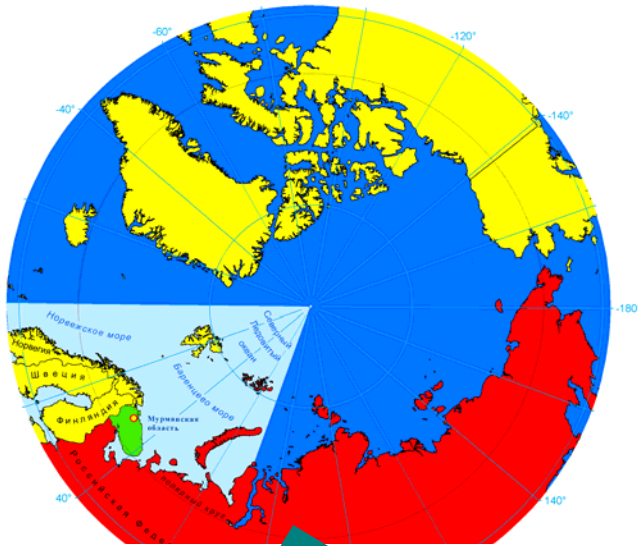
Severomorsk – **54,4** thousand people;

Monchegorsk – **51,4** thousand people.

Lovozero, Kola and Kovdor administrative districts are the areas for compact living of North small indigenous people – Saami.



The Murmansk region is a strategy region within North-West Federal District (NWFD)



Specific geo-politic location.

Unique under composition and stocks mineral raw materials and biological resources.

Direct approach to the World ocean and non-freezing marine port.



The Northern Sea Route is the national transport road

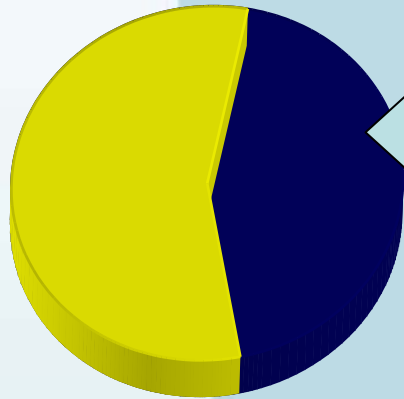
Murmansk

- The northern gate of Russia
- The start point of transit via the Northern Sea Route
- The capital of atomic ice breaker fleet



The industry is a base of regional economics

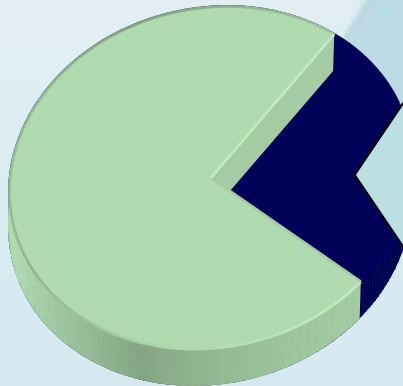
Industry in structure of Gross Regional Product (GRP)



41.6%

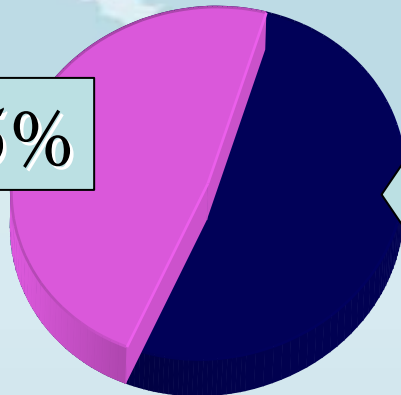


Amount of employees to be in industry



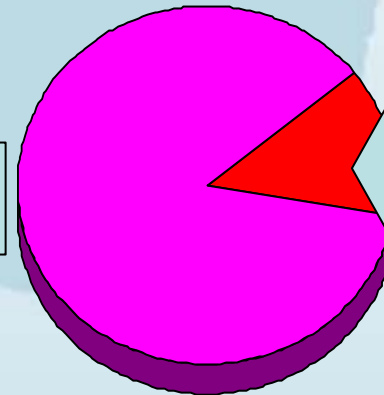
25%

Mining complex in regional industry



55 %

Fishing complex in regional industry



15.6%

The Murmansk region in all-russian production

Any sixth ton of fish foodstuffs is produced at Murmansk factories



JSC "MURMANSK TRAWL FLEET"



"KOVODORSKY GOK"
JSC

Apatit concentrate



«KOVODORSLUDA»
JSC

**Mica, niobium,
tantalum**

Nepheline, baddeleyite

Nickel

Cobalt

Fish foodstuffs

Copper

Iron - ore raw materials

Aluminum



"KAZ-SUAL" branch
of "SUAL" JSC



"APATIT"
JSC



«OLKON»
JSC



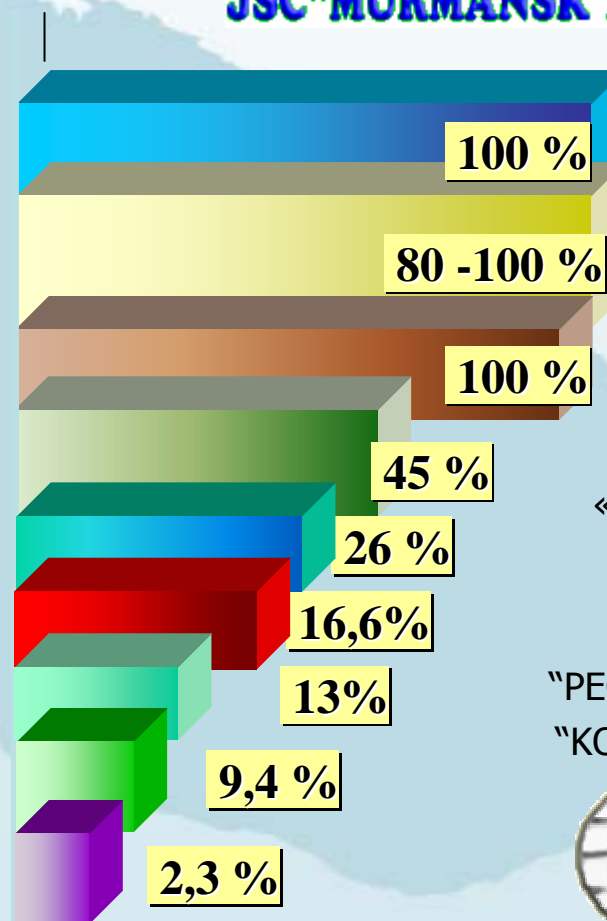
«LOVOZERSKY GOK»



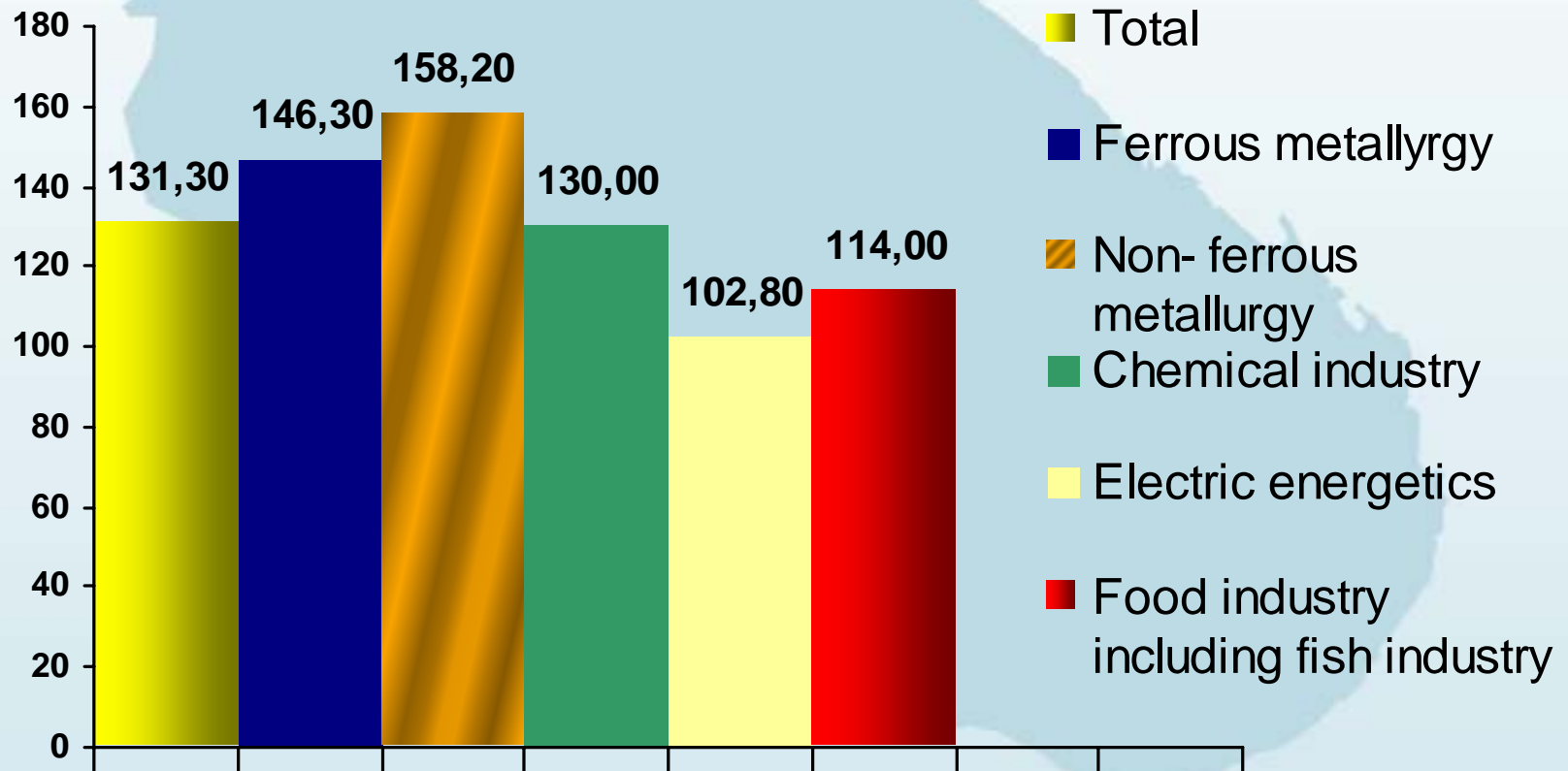
"PECHENGANICKEL" of
"KOLSKAYA GMK" JSC



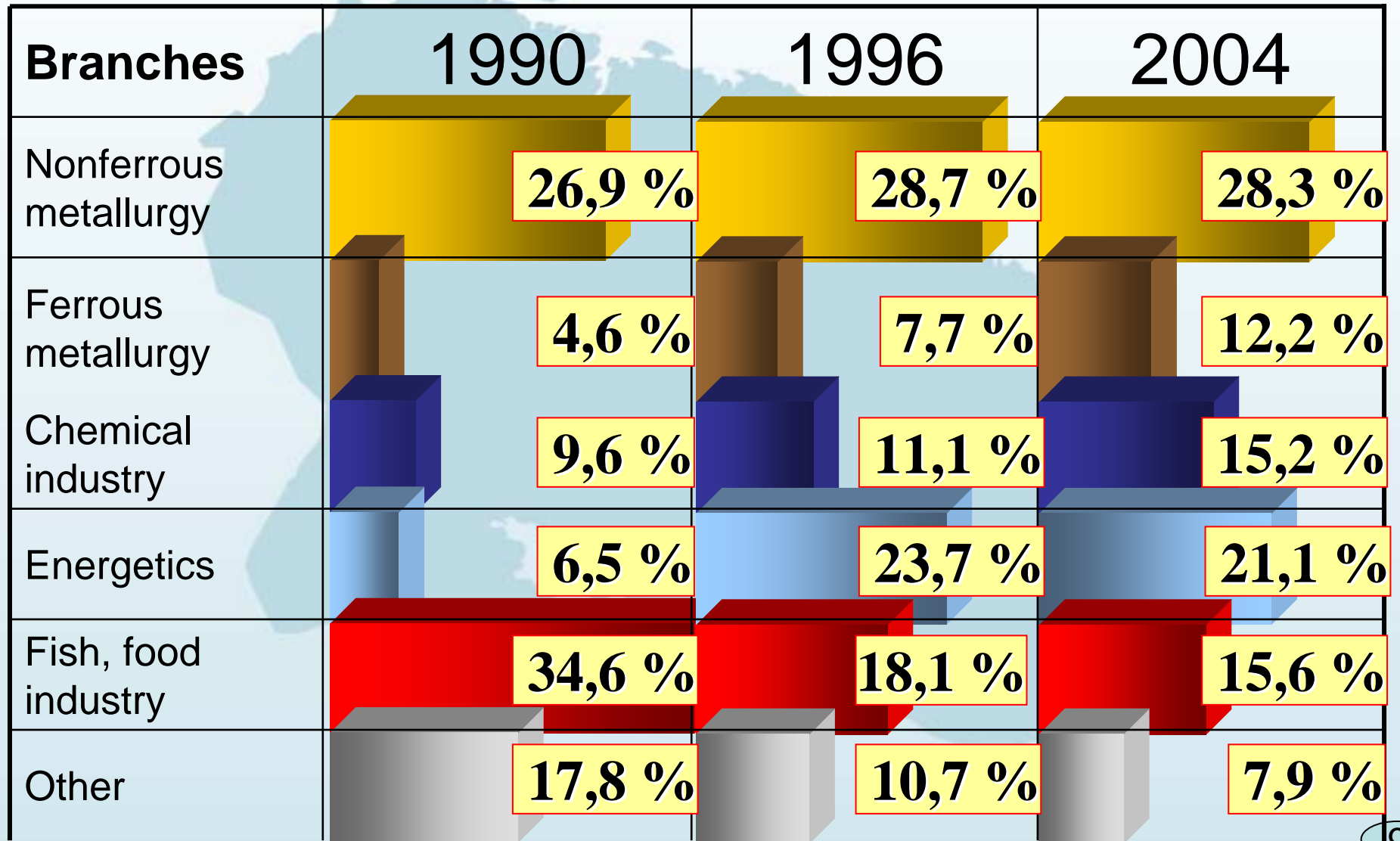
"SEVERONICKEL" of
"KOLSKAYA GMK" JSC



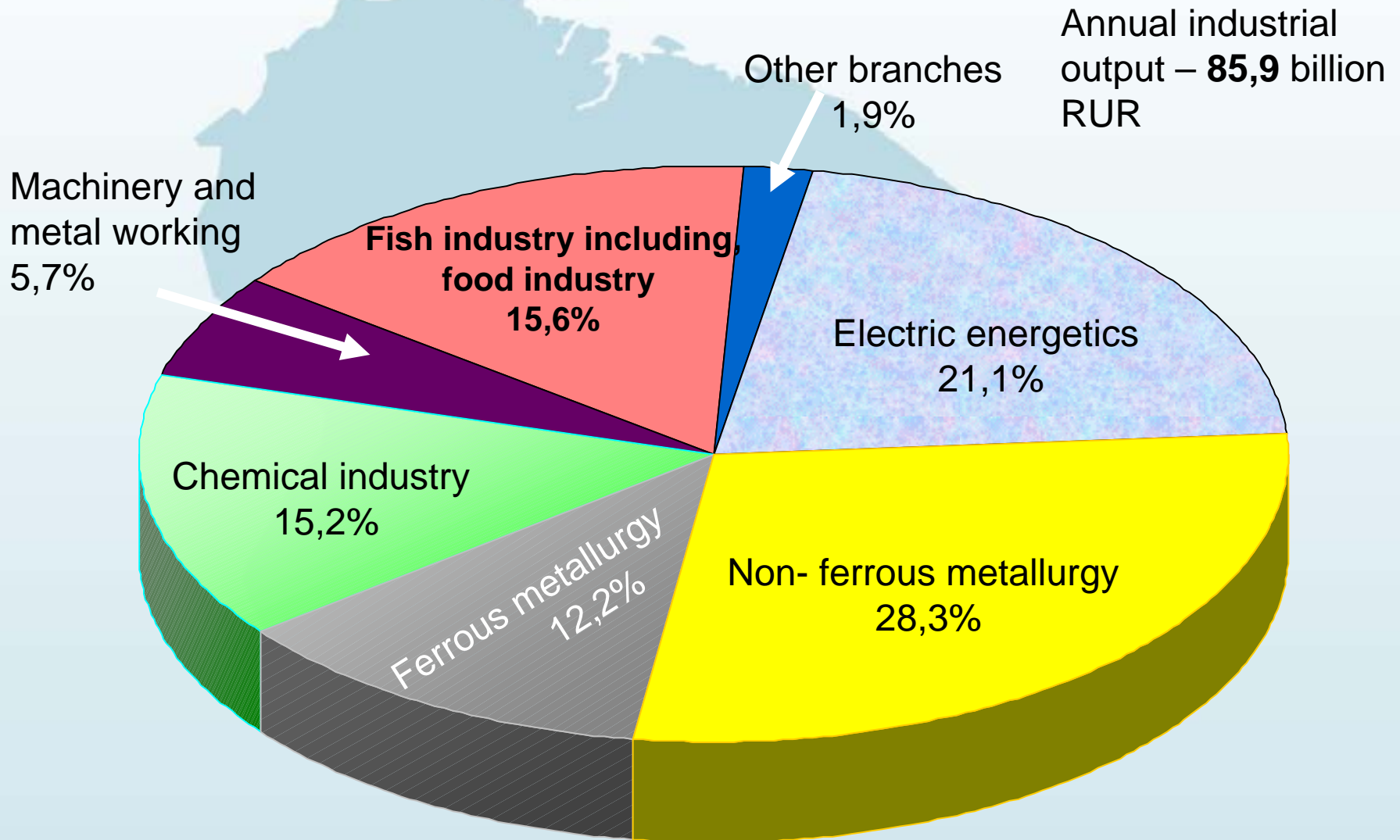
Murmansk region industrial output 2004/1996 (%)



The industry structure



Structure of Murmansk region industrial output in 2004



Strategy of region economic development up to 2015

Aims of study:

- To join in one document the strategy intentions of factories representing key branches of economics and to specify the main parameters to develop social-economic policy of governmental and managing authorities.
- To select properly priorities to use financial, organizational and managing instruments impacting economical and social processes.
- To inform the population about prospects of region social-economic development.

Basic complexes of region economics are main elements of the Strategy

Mining

Fuel-energy

Fish industry

Transport – communications

Agriculture



2004 – Strategy of tourism development

2005 – Strategy of science, scientific – technical and innovation activities development

2005 – Strategy of construction complex development

The main Strategy challenges

- Strengthening and developing production and market infrastructure.
- Diversification of production and product re-structurization, establishment and development of new technologies;
- Increasing complete use level of raw material and strengthening its processing level;
- Reducing costs and energy capacity, improving environmental parameters of production;
- Technical renovation, re-structurization and updating production.

**The main challenge is to increase
competitiveness of regional economics**

Priorities in Strategy

- Establishment of conditions to increase the competitiveness of products and services produced by enterprises of Murmansk region;
- Preparing staff for all branches and activities, in first line to manage information and science-consuming technologies, innovations, management, marketing and other prospect directions in field of governance and economic activity;
- Improving business climate and developing SMBs



Thank you for attention!



<http://gov.murman.ru/programms/>