

Some like it cold –

Consequences of warming seas for the distribution of large bodied fish

Hannes Höffle¹, Olav S. Kjesbu¹

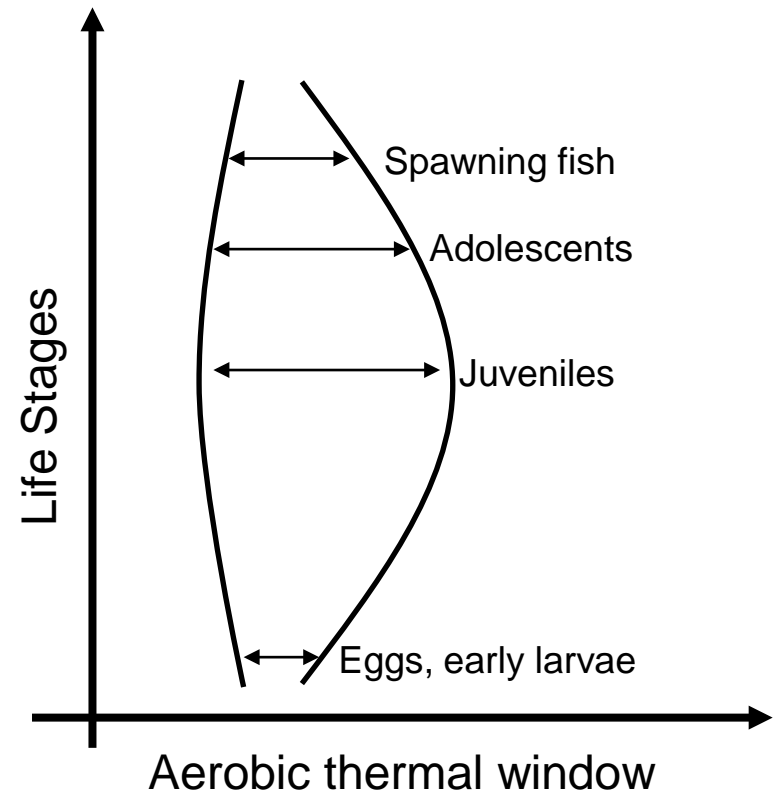
¹Institute of Marine Research, Bergen, NO

ICES ASC 2014, A Coruña, ES

15 September 2014

Could large fish run out of space?

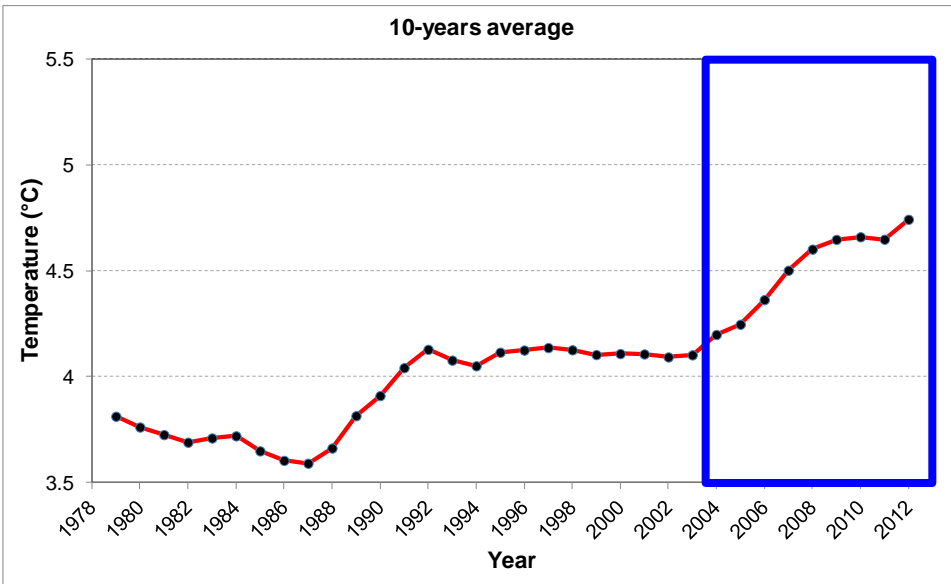
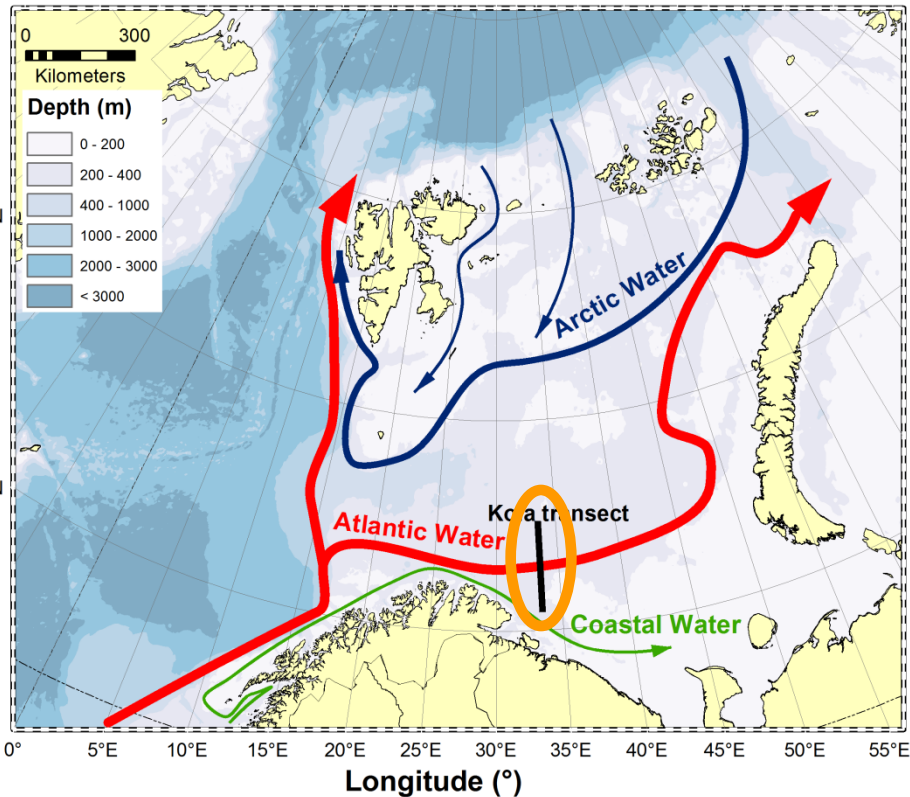
- Less habitat with optimal temperature
- Thermal stress decreases benefits
- More competition in a growing stock



(Redrawn; Pörtner & Farrell 2008)

The Barents Sea ecosystem

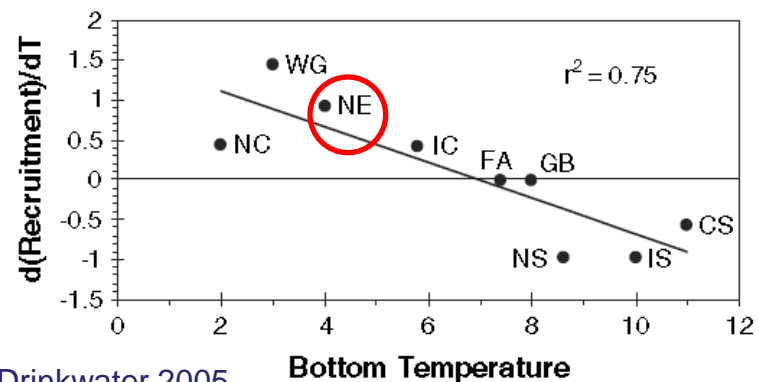
40°W 35°W 30°W 20°W 10°W 0° 10°E 25°E 40°E 55°E 65°E 75°E 85°E 90°E 95°E



Cod (*Gadus morhua*)



Capelin (*Mallotus vilosus*)



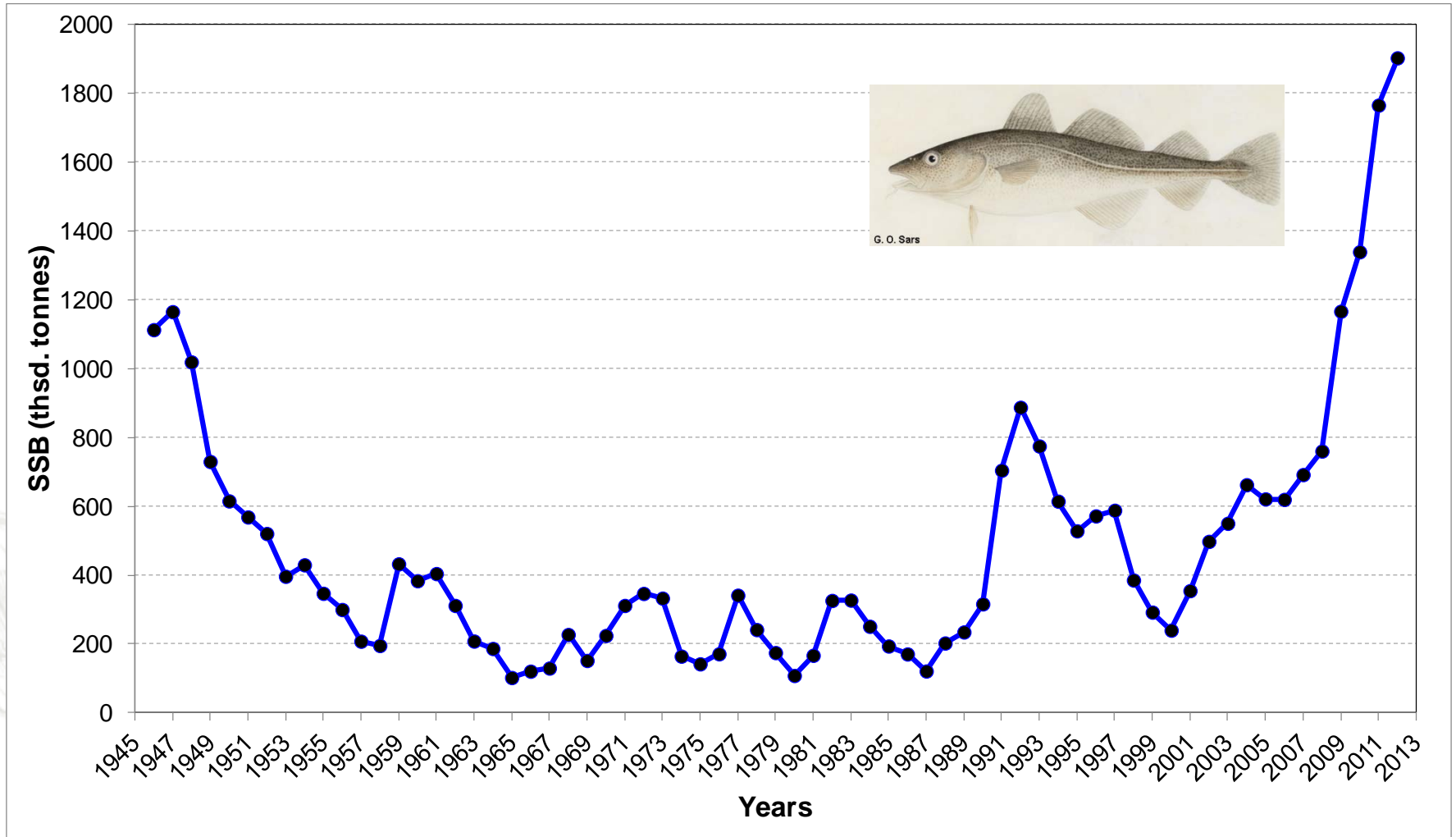
Drinkwater 2005

ICES CM 2014/3939 M:07

15. Sept. 2014

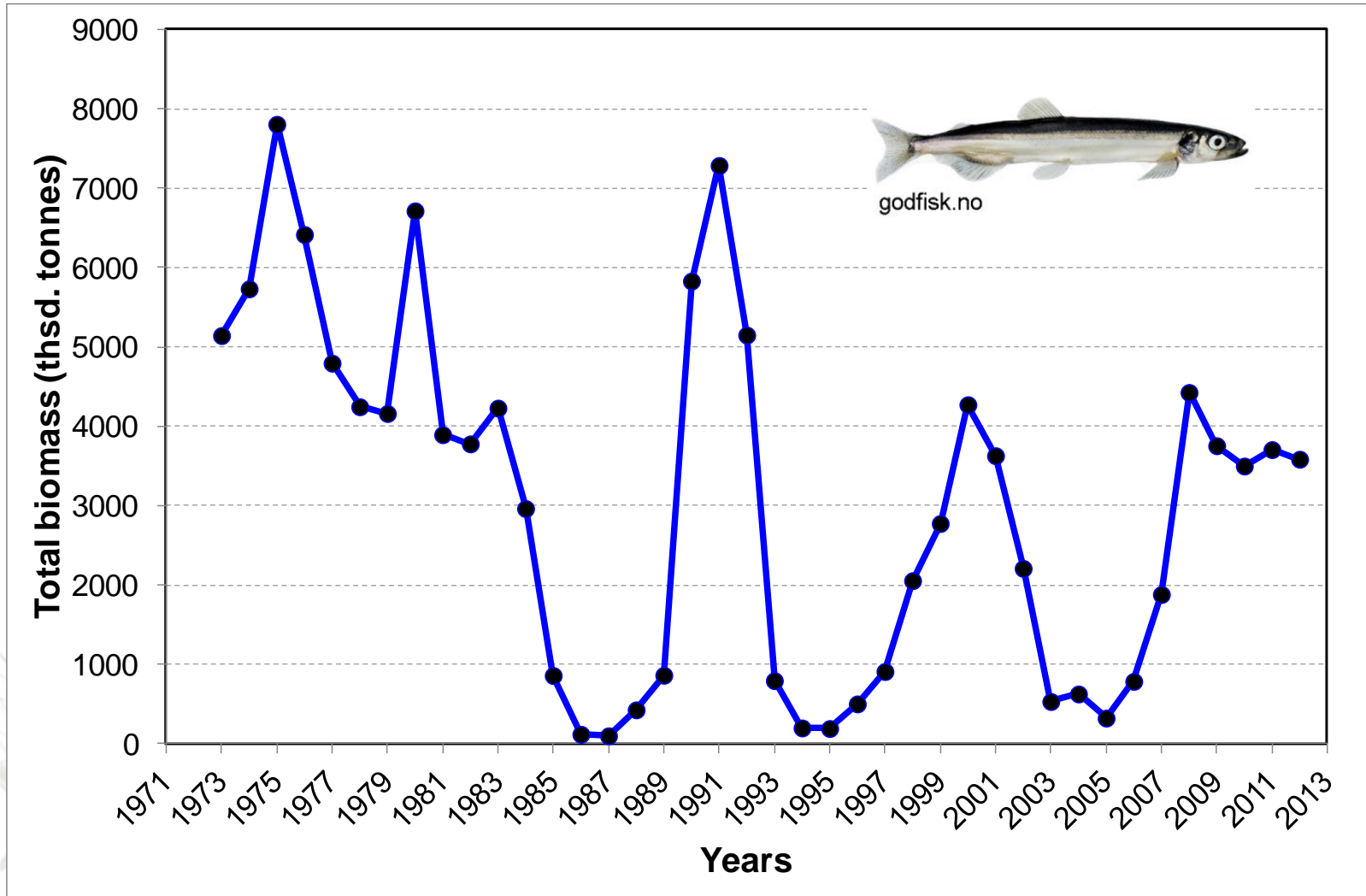
The Barents Sea ecosystem

North East Arctic cod

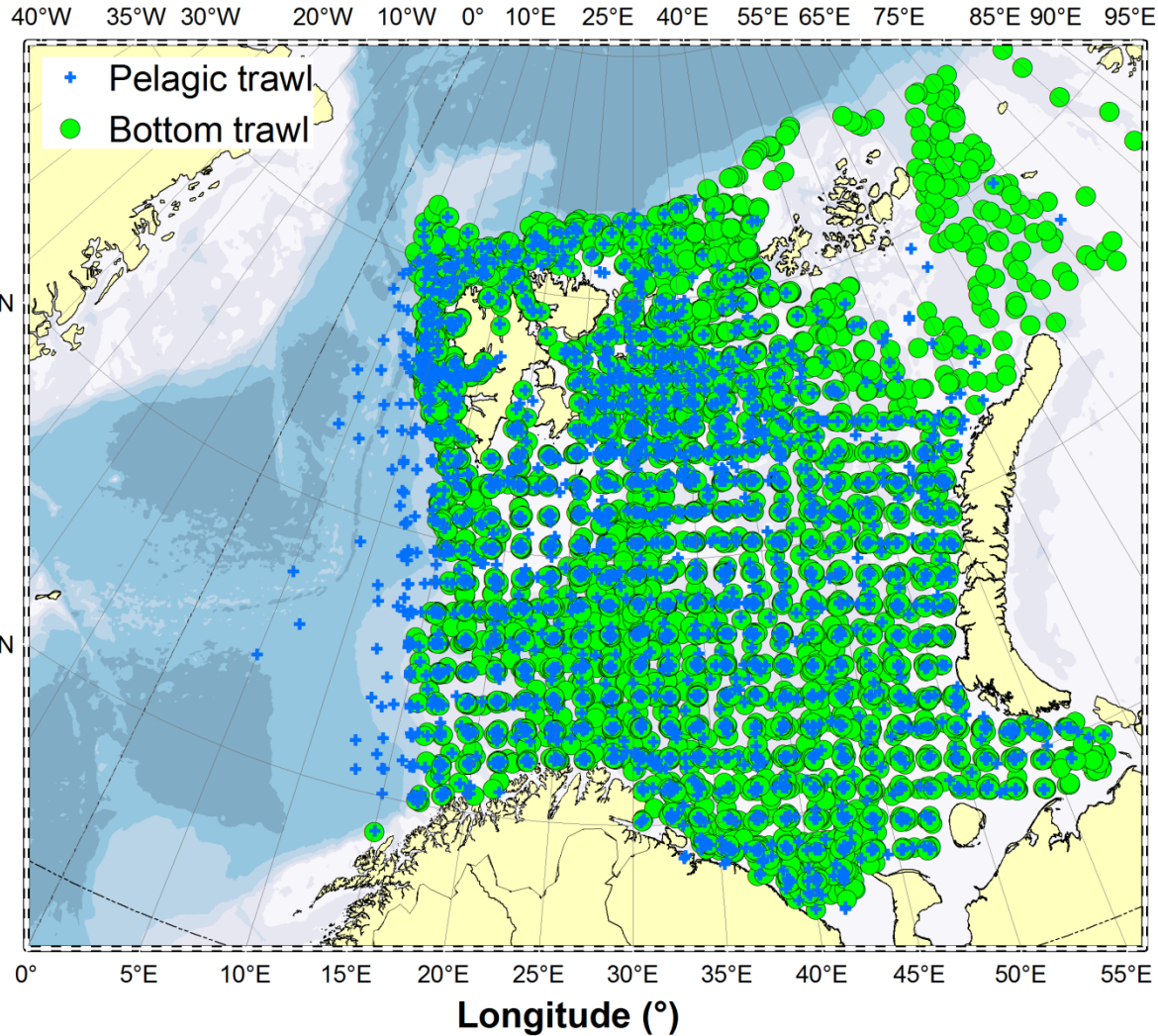


The Barents Sea ecosystem

Barents Sea capelin



Joint Ecosystem Survey



Since 2004

Aug. – Sept.

Acoustic and Trawl

Norway & Russia

4 – 5 Ships

Bottom trawls: 4839

Pelagic trawls: 3590



Average distribution 2004 - 2013

Length class	Range (cm)
1	0-10
2	10-20
3	20-30
4	30-40
5	40-50
6	50-60
7	60-70
8	70-80
9	80-90
10	90-100
11	100-110
12	110-120
13	120-130
14	130-140

Centre of gravity:

$$\bar{x} = \frac{\sum x \times z}{\sum z}$$

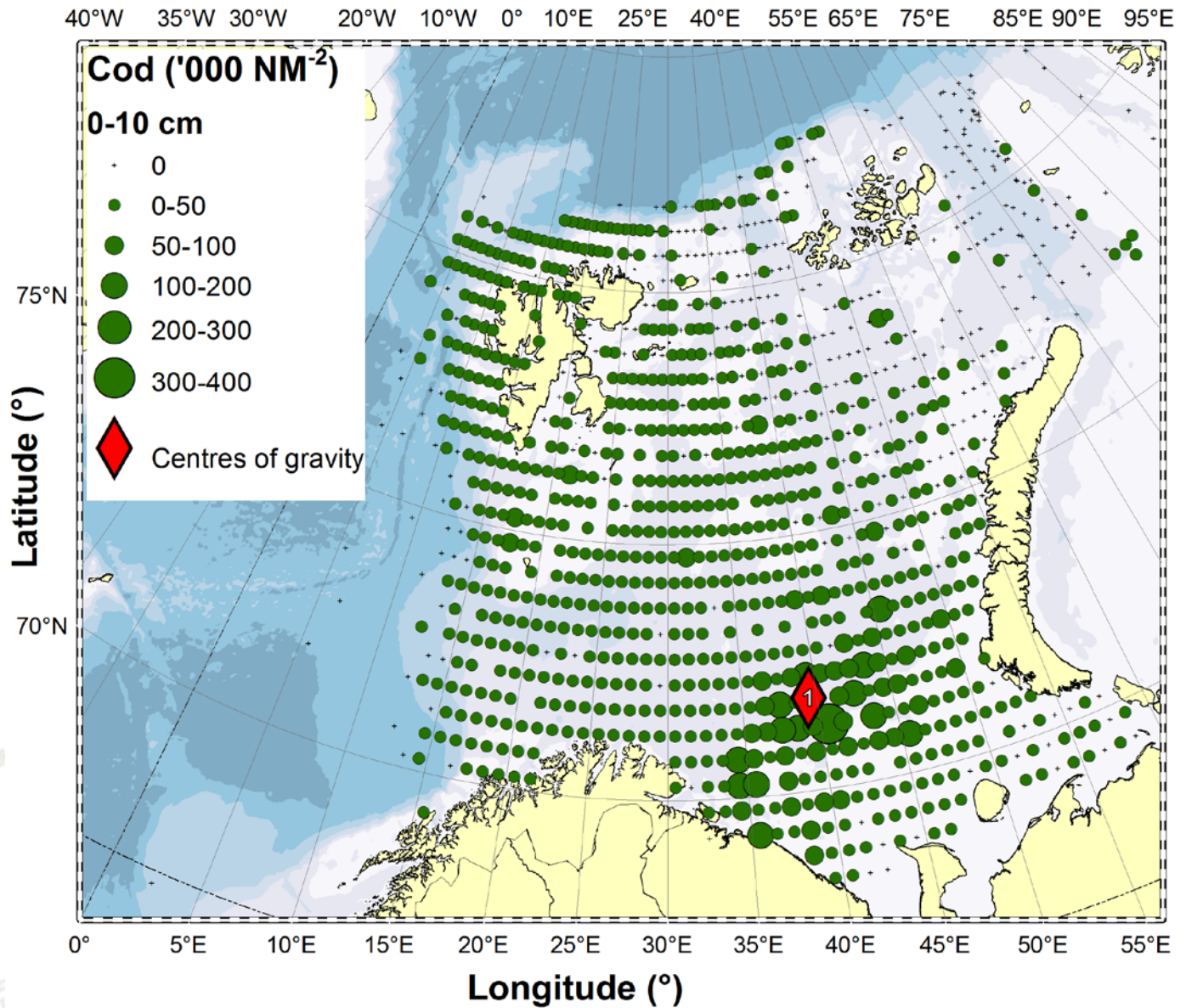
x ... Longitude or Latitude (y)

z ... Cod (NM⁻²)



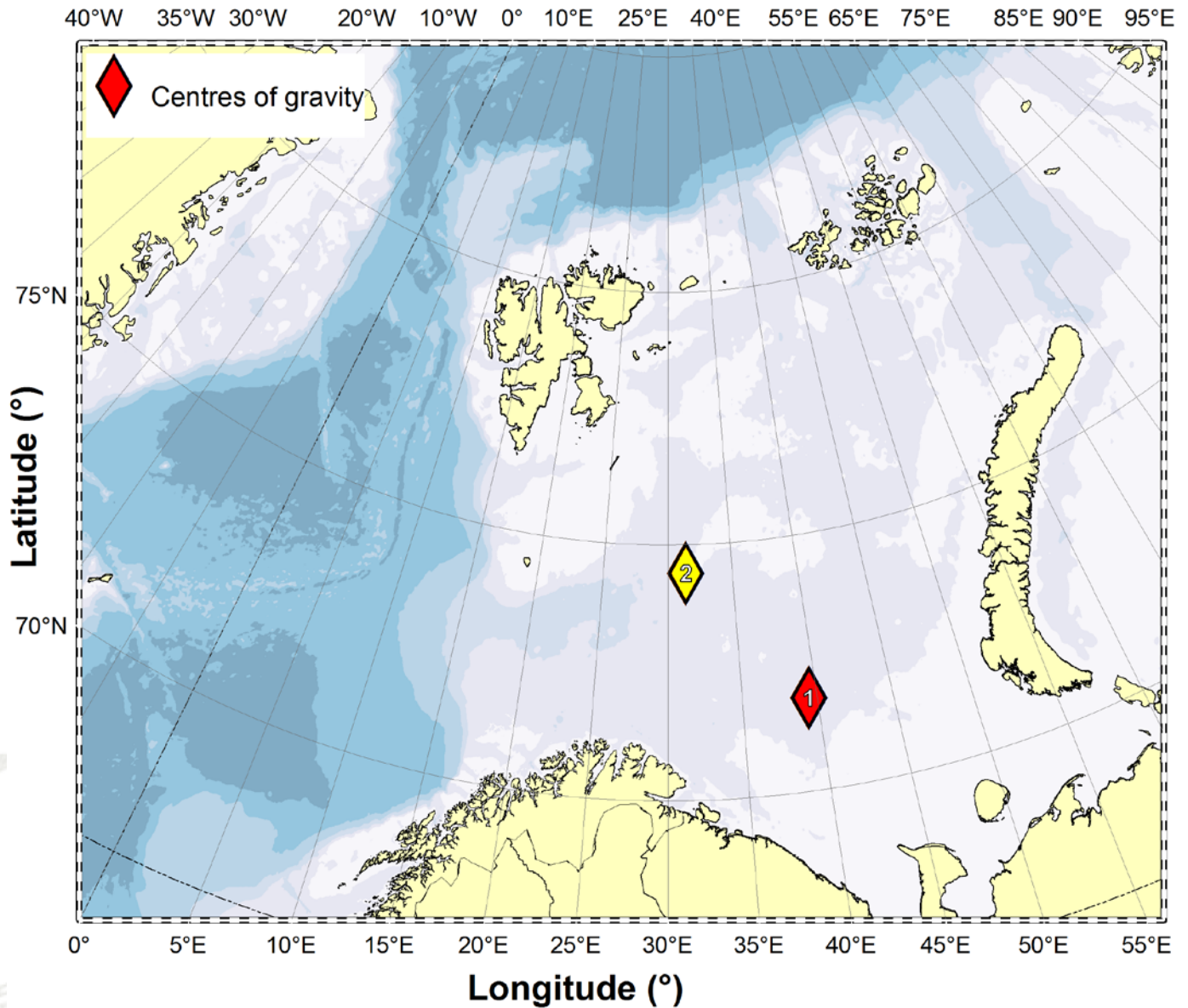
Average distribution 2004 - 2013

Length class	Range (cm)
1	0-10
2	10-20
3	20-30
4	30-40
5	40-50
6	50-60
7	60-70
8	70-80
9	80-90
10	90-100
11	100-110
12	110-120
13	120-130
14	130-140



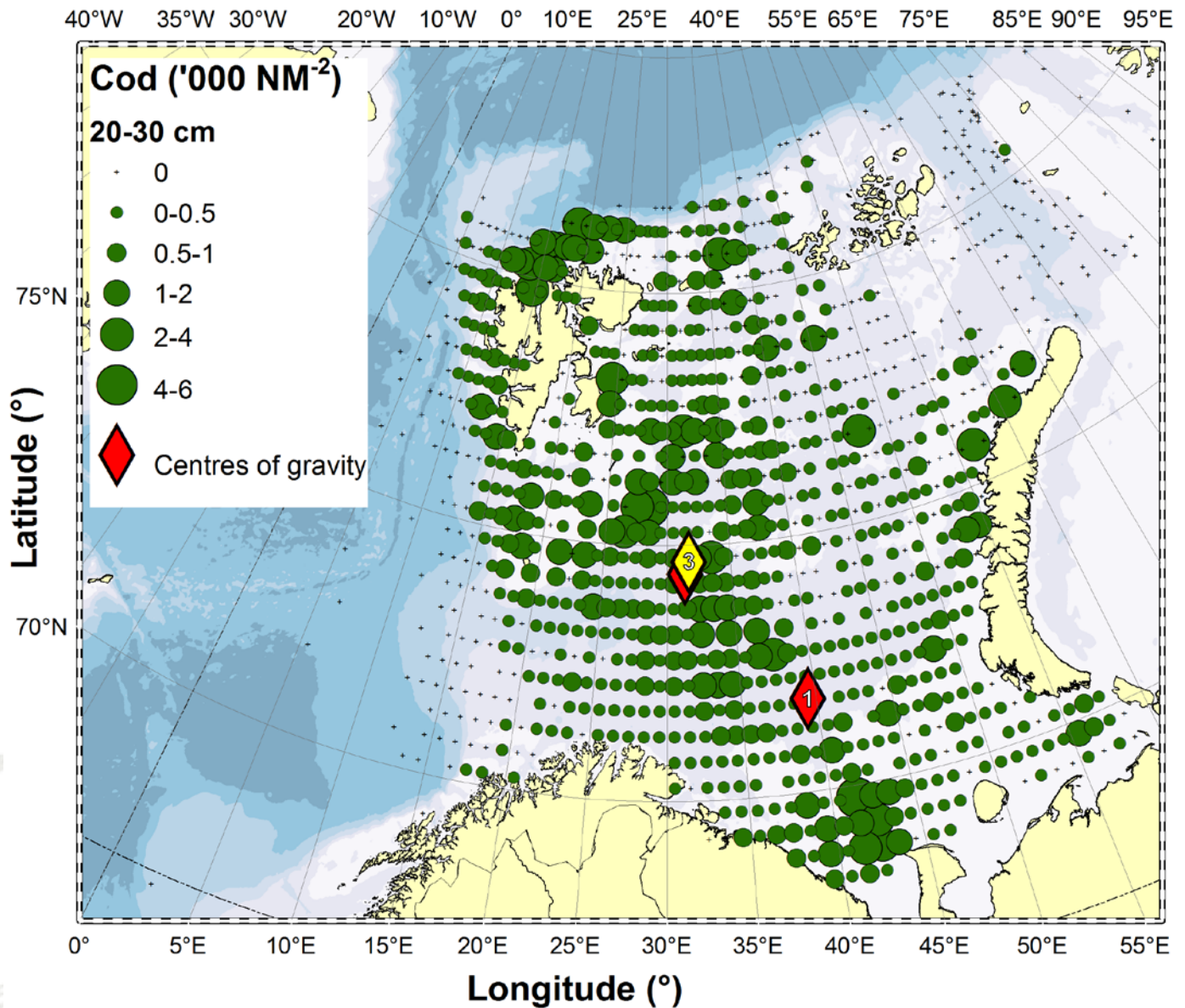
Average distribution 2004 - 2013

Length class	Range (cm)
1	0-10
2	10-20
3	20-30
4	30-40
5	40-50
6	50-60
7	60-70
8	70-80
9	80-90
10	90-100
11	100-110
12	110-120
13	120-130
14	130-140



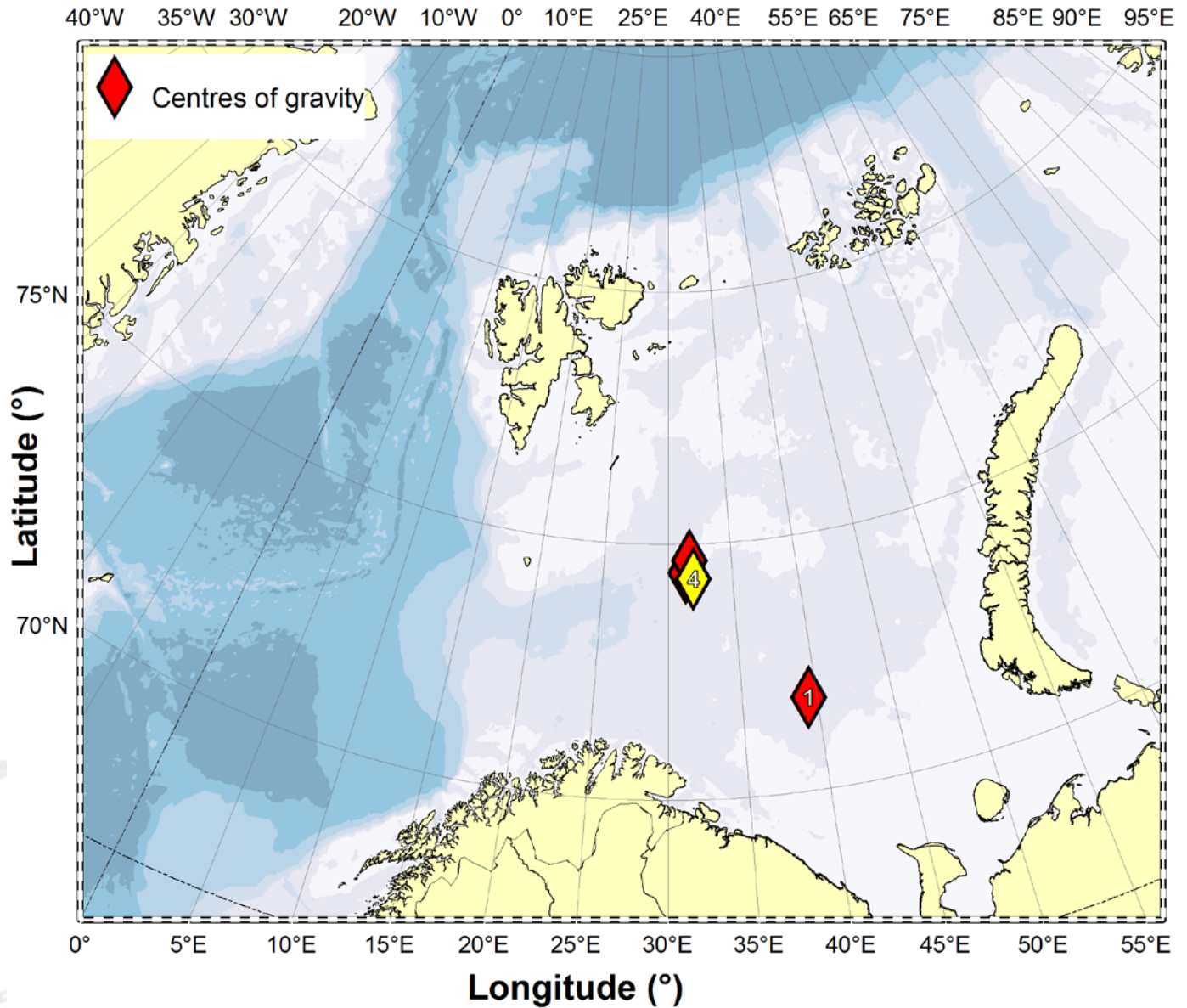
Average distribution 2004 - 2013

Length class	Range (cm)
1	0-10
2	10-20
3	20-30
4	30-40
5	40-50
6	50-60
7	60-70
8	70-80
9	80-90
10	90-100
11	100-110
12	110-120
13	120-130
14	130-140



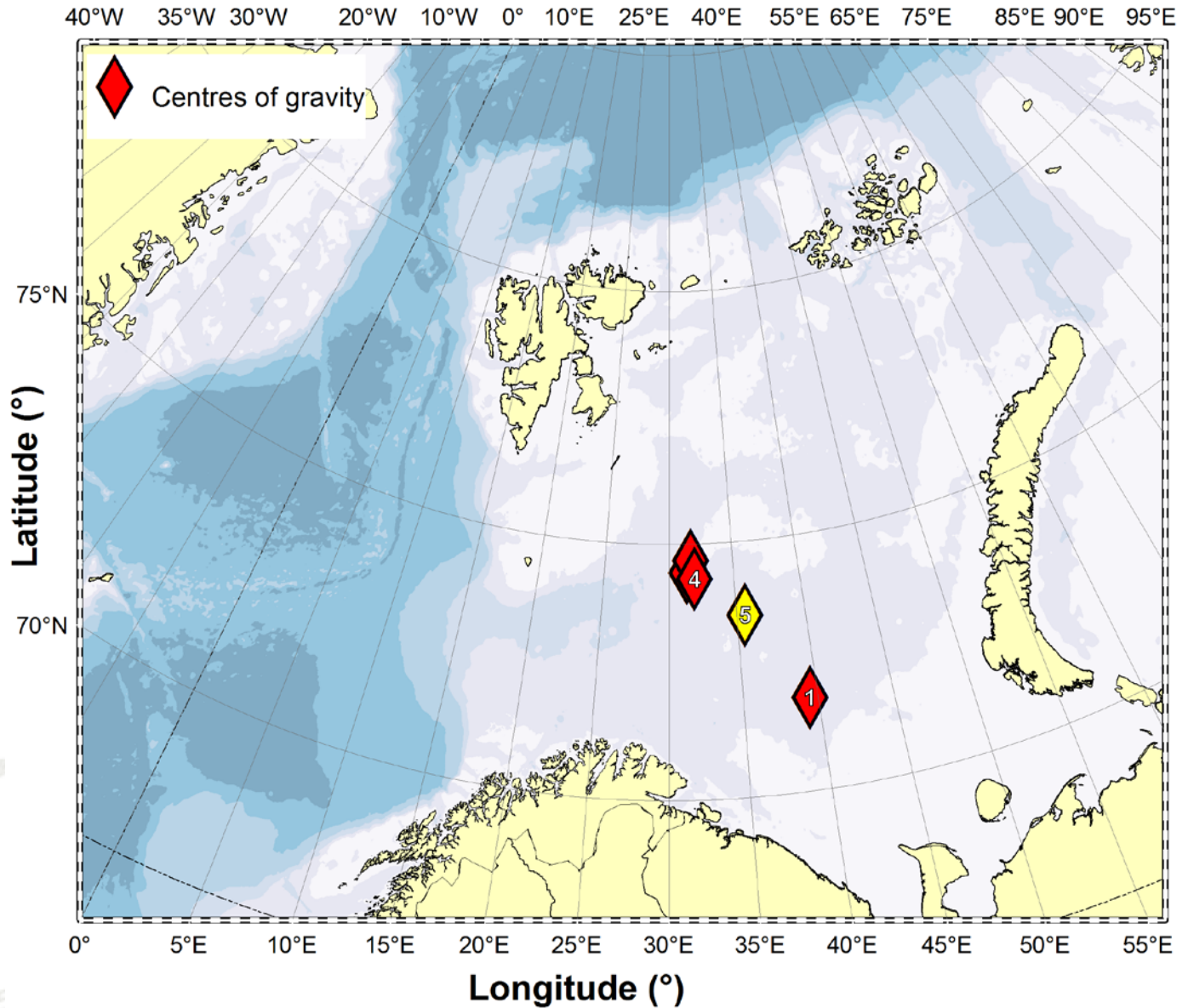
Average distribution 2004 - 2013

Length class	Range (cm)
1	0-10
2	10-20
3	20-30
4	30-40
5	40-50
6	50-60
7	60-70
8	70-80
9	80-90
10	90-100
11	100-110
12	110-120
13	120-130
14	130-140



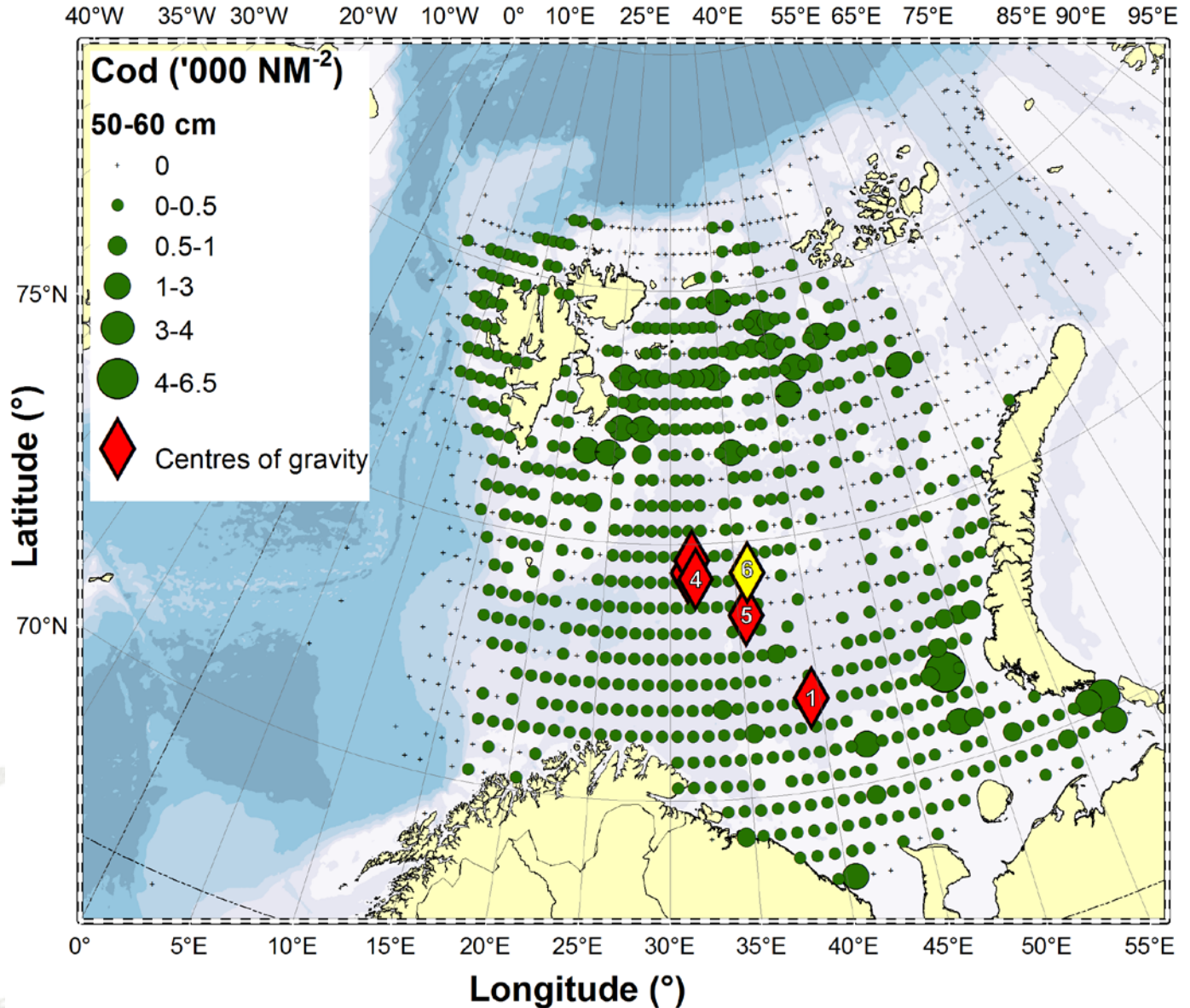
Average distribution 2004 - 2013

Length class	Range (cm)
1	0-10
2	10-20
3	20-30
4	30-40
5	40-50
6	50-60
7	60-70
8	70-80
9	80-90
10	90-100
11	100-110
12	110-120
13	120-130
14	130-140



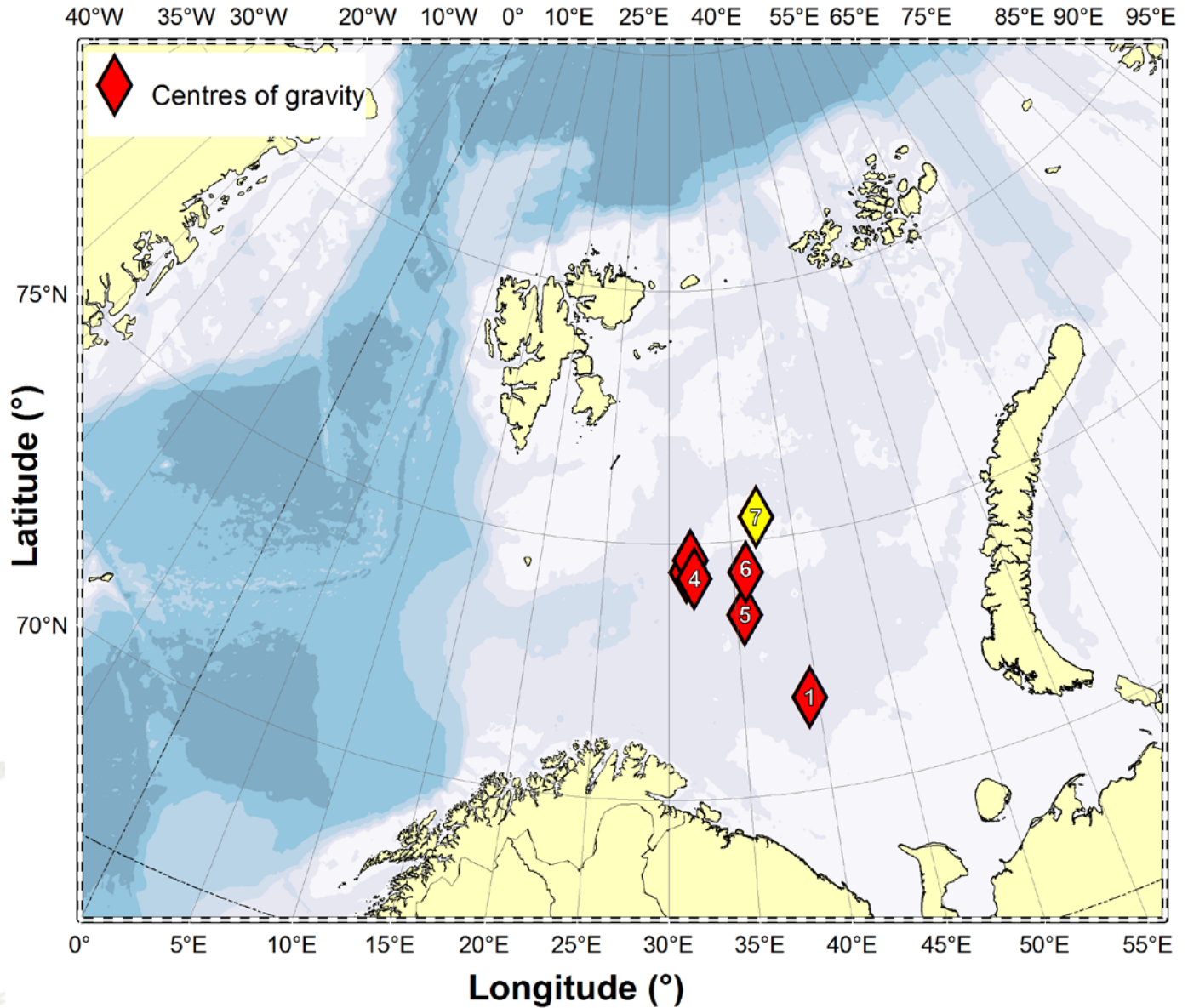
Average distribution 2004 - 2013

Length class	Range (cm)
1	0-10
2	10-20
3	20-30
4	30-40
5	40-50
6	50-60
7	60-70
8	70-80
9	80-90
10	90-100
11	100-110
12	110-120
13	120-130
14	130-140



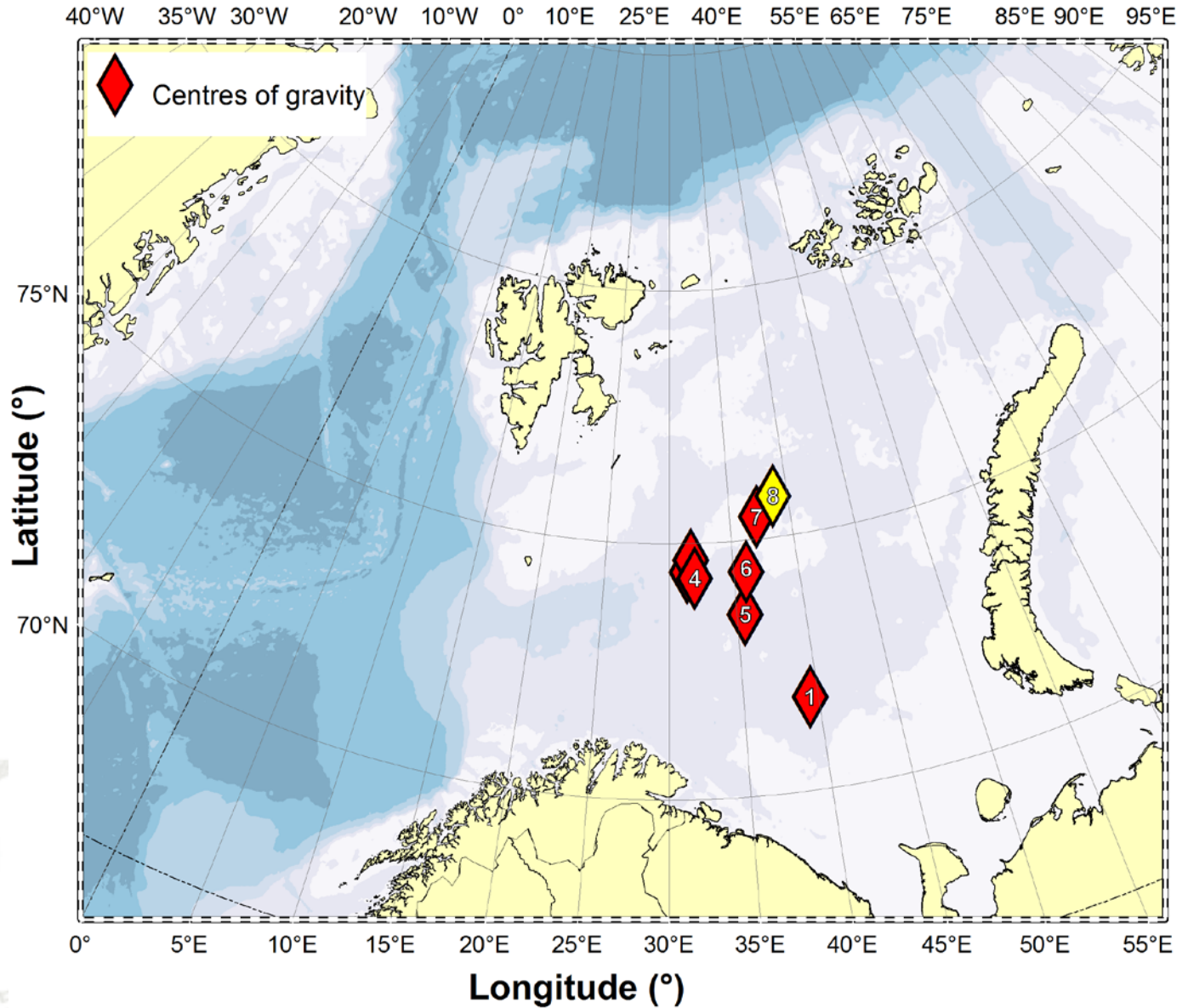
Average distribution 2004 - 2013

Length class	Range (cm)
1	0-10
2	10-20
3	20-30
4	30-40
5	40-50
6	50-60
7	60-70
8	70-80
9	80-90
10	90-100
11	100-110
12	110-120
13	120-130
14	130-140



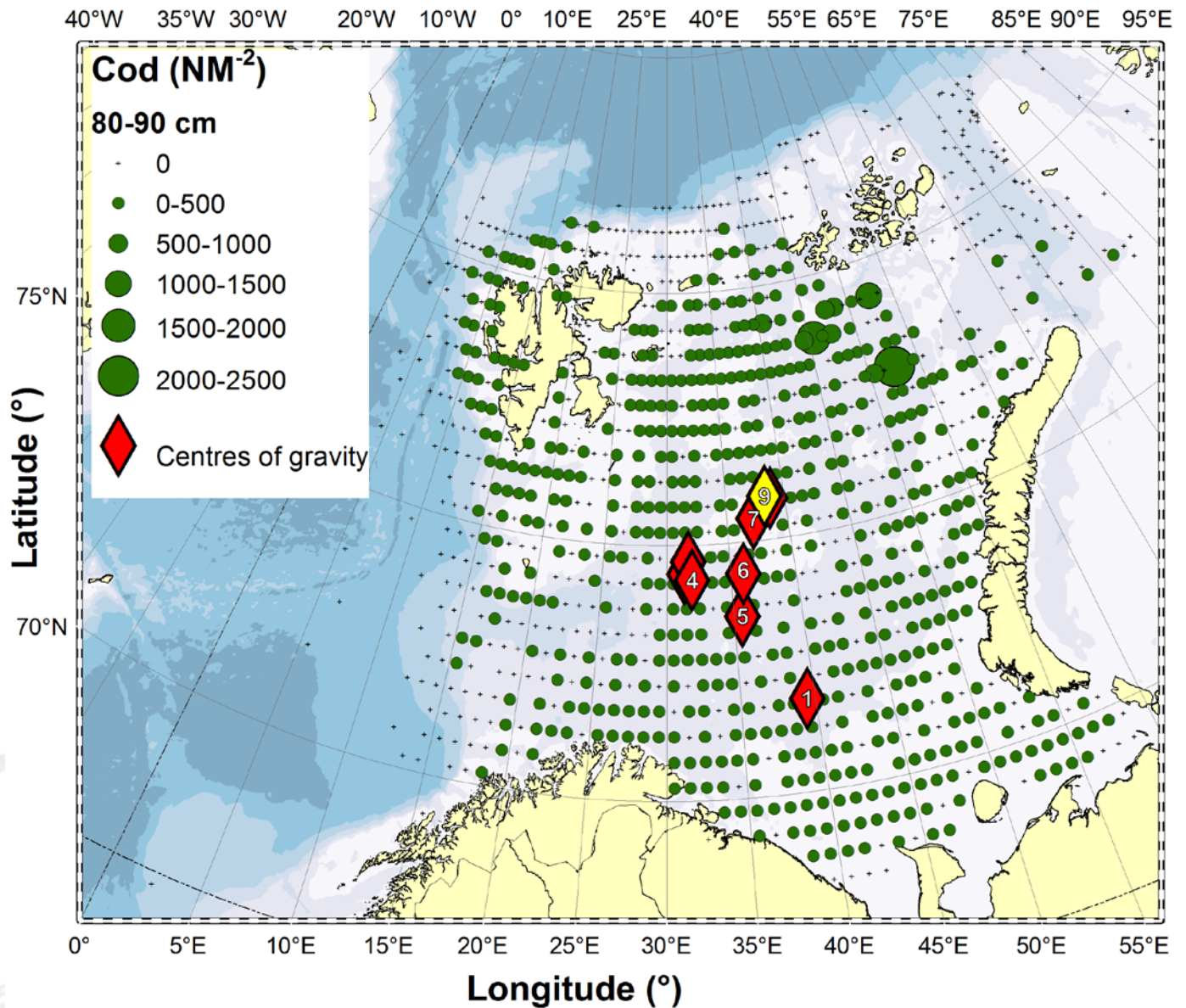
Average distribution 2004 - 2013

Length class	Range (cm)
1	0-10
2	10-20
3	20-30
4	30-40
5	40-50
6	50-60
7	60-70
8	70-80
9	80-90
10	90-100
11	100-110
12	110-120
13	120-130
14	130-140



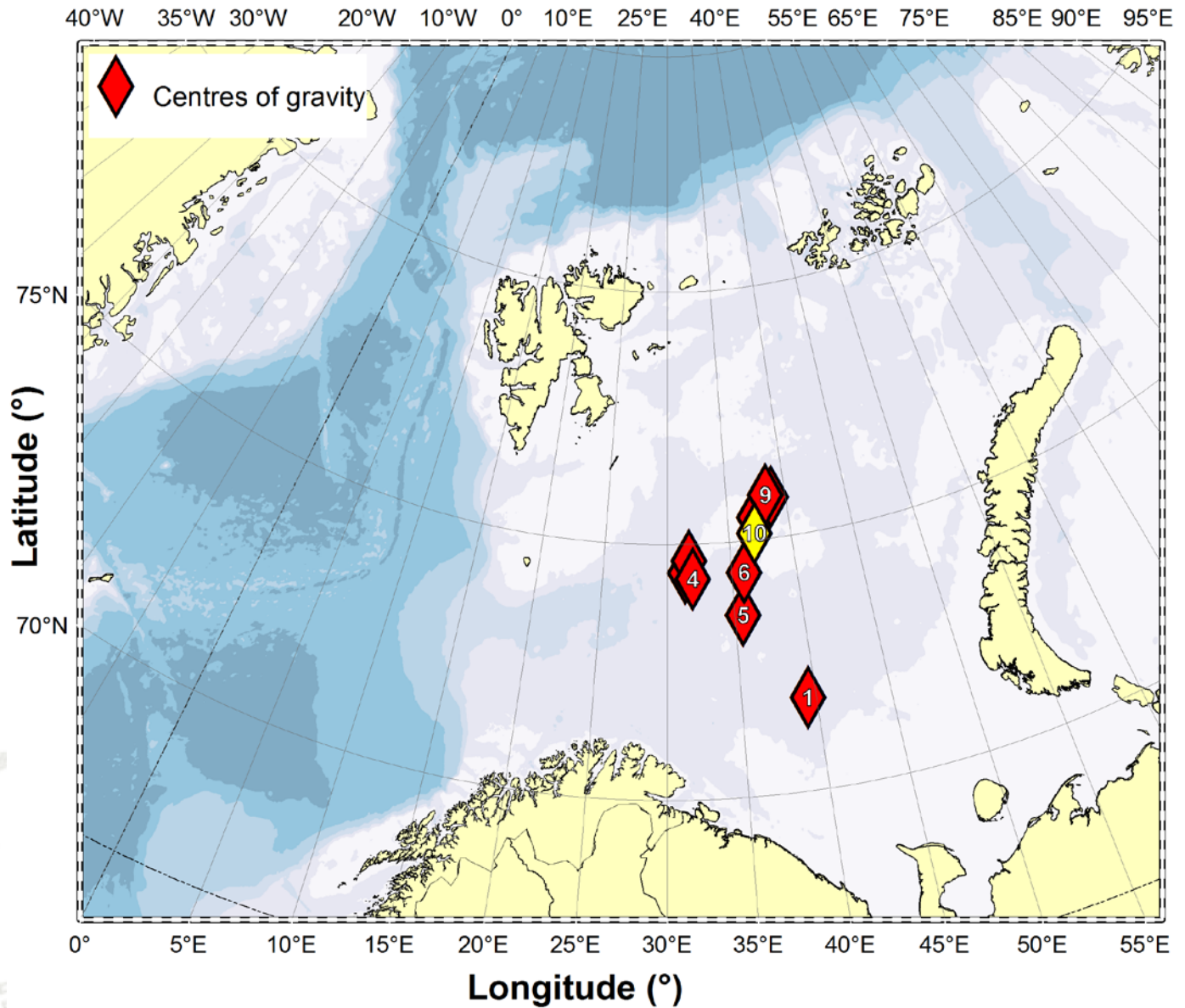
Average distribution 2004 - 2013

Length class	Range (cm)
1	0-10
2	10-20
3	20-30
4	30-40
5	40-50
6	50-60
7	60-70
8	70-80
9	80-90
10	90-100
11	100-110
12	110-120
13	120-130
14	130-140



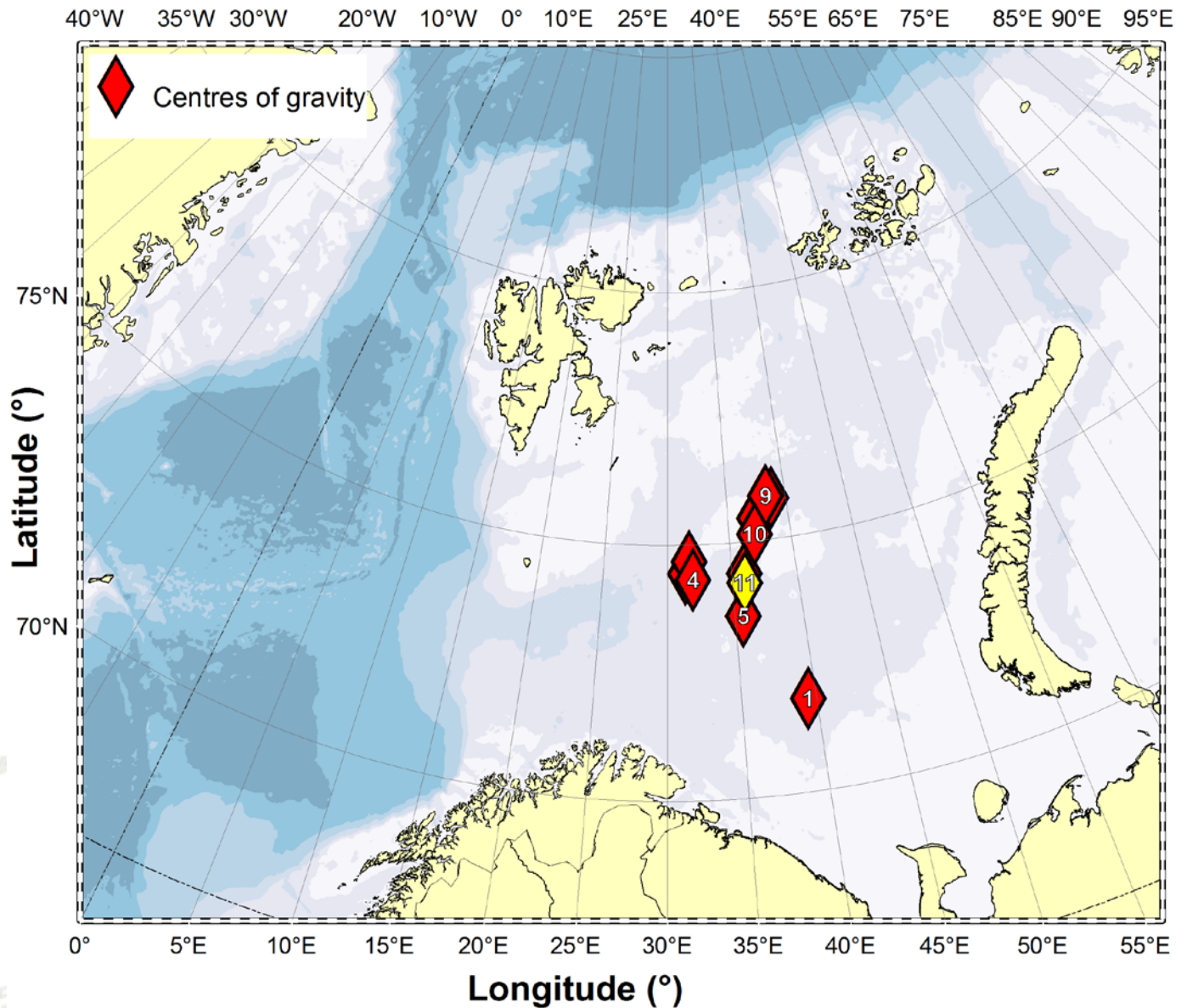
Average distribution 2004 - 2013

Length class	Range (cm)
1	0-10
2	10-20
3	20-30
4	30-40
5	40-50
6	50-60
7	60-70
8	70-80
9	80-90
10	90-100
11	100-110
12	110-120
13	120-130
14	130-140



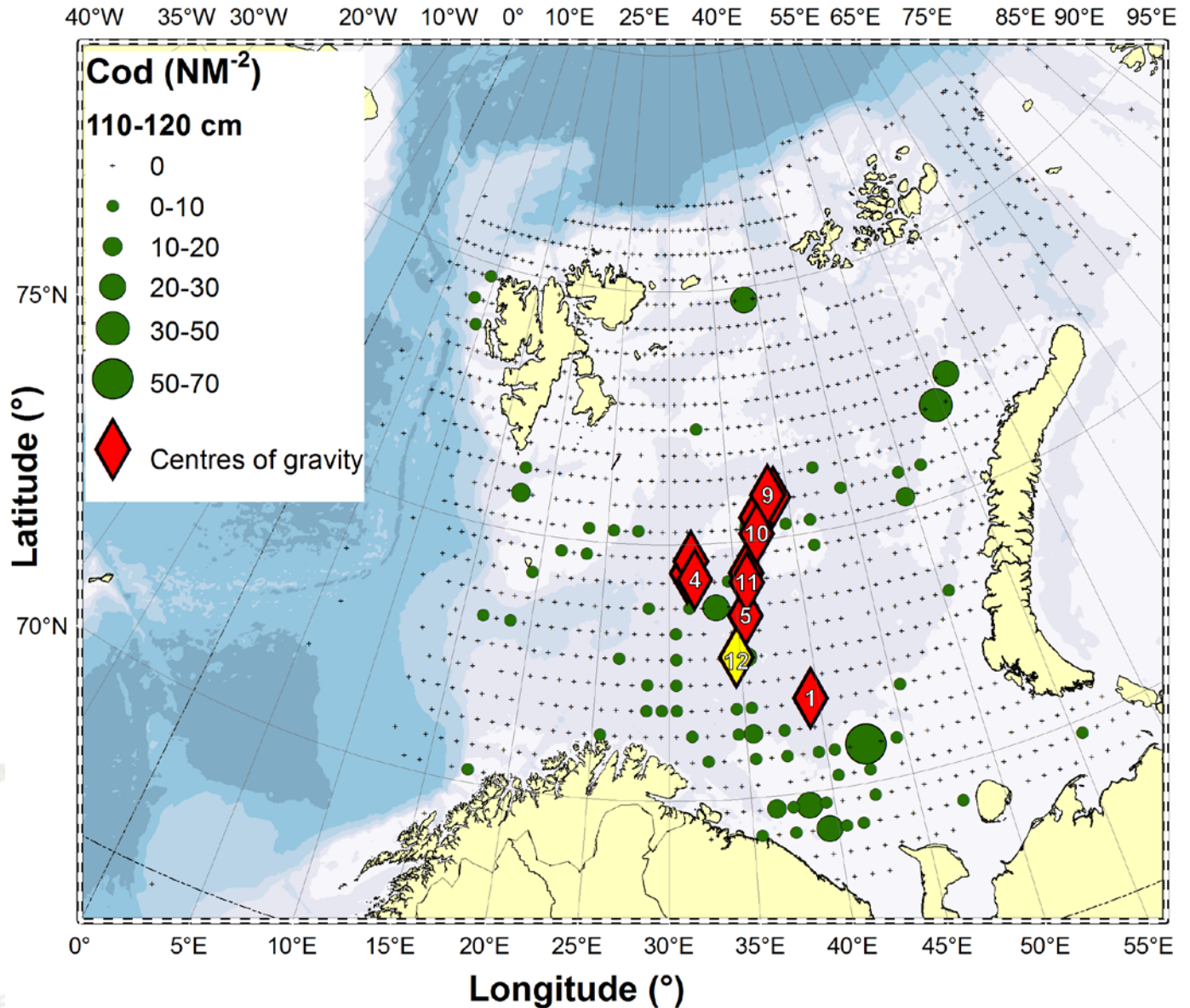
Average distribution 2004 - 2013

Length class	Range (cm)
1	0-10
2	10-20
3	20-30
4	30-40
5	40-50
6	50-60
7	60-70
8	70-80
9	80-90
10	90-100
11	100-110
12	110-120
13	120-130
14	130-140



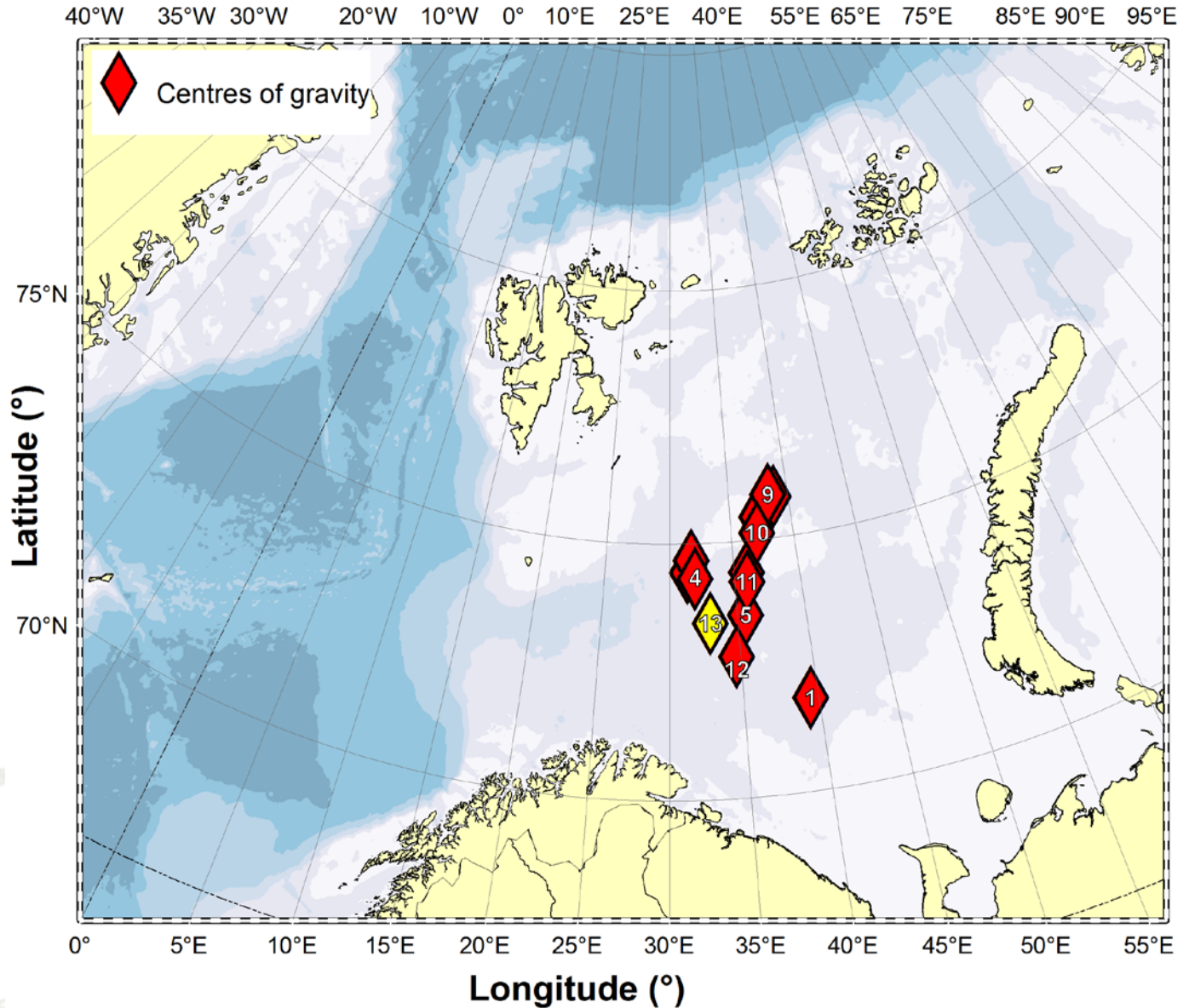
Average distribution 2004 - 2013

Length class	Range (cm)
1	0-10
2	10-20
3	20-30
4	30-40
5	40-50
6	50-60
7	60-70
8	70-80
9	80-90
10	90-100
11	100-110
12	110-120
13	120-130
14	130-140



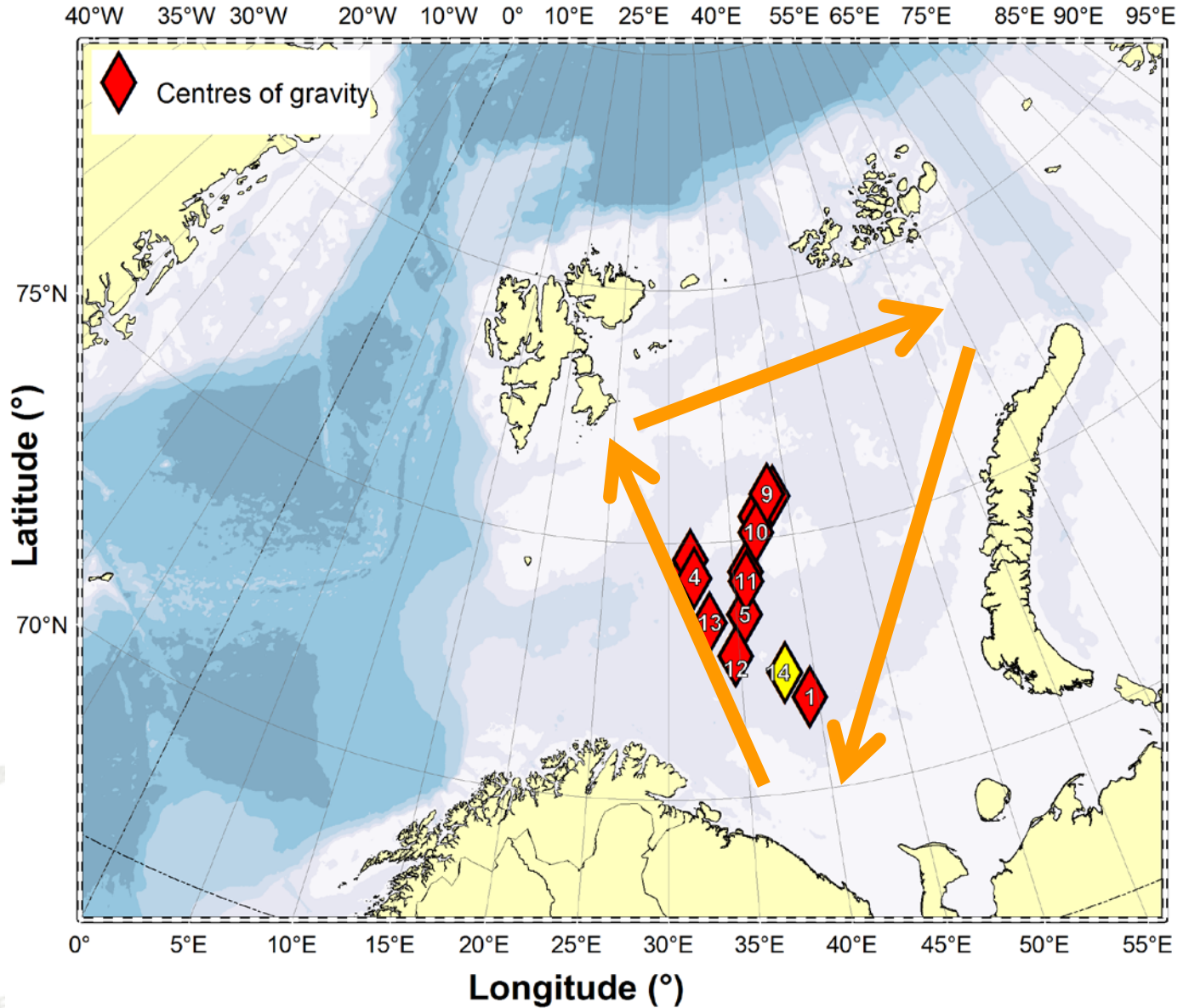
Average distribution 2004 - 2013

Length class	Range (cm)
1	0-10
2	10-20
3	20-30
4	30-40
5	40-50
6	50-60
7	60-70
8	70-80
9	80-90
10	90-100
11	100-110
12	110-120
13	120-130
14	130-140

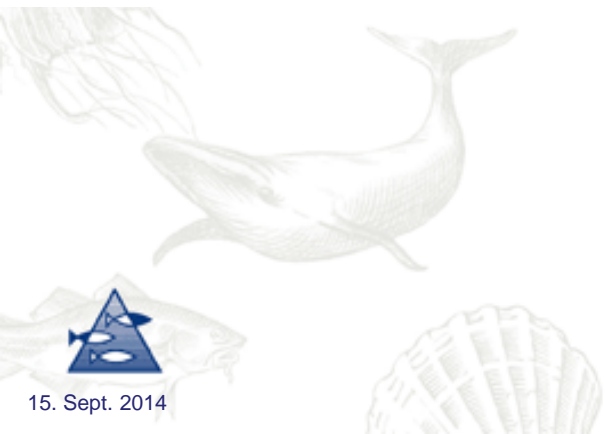
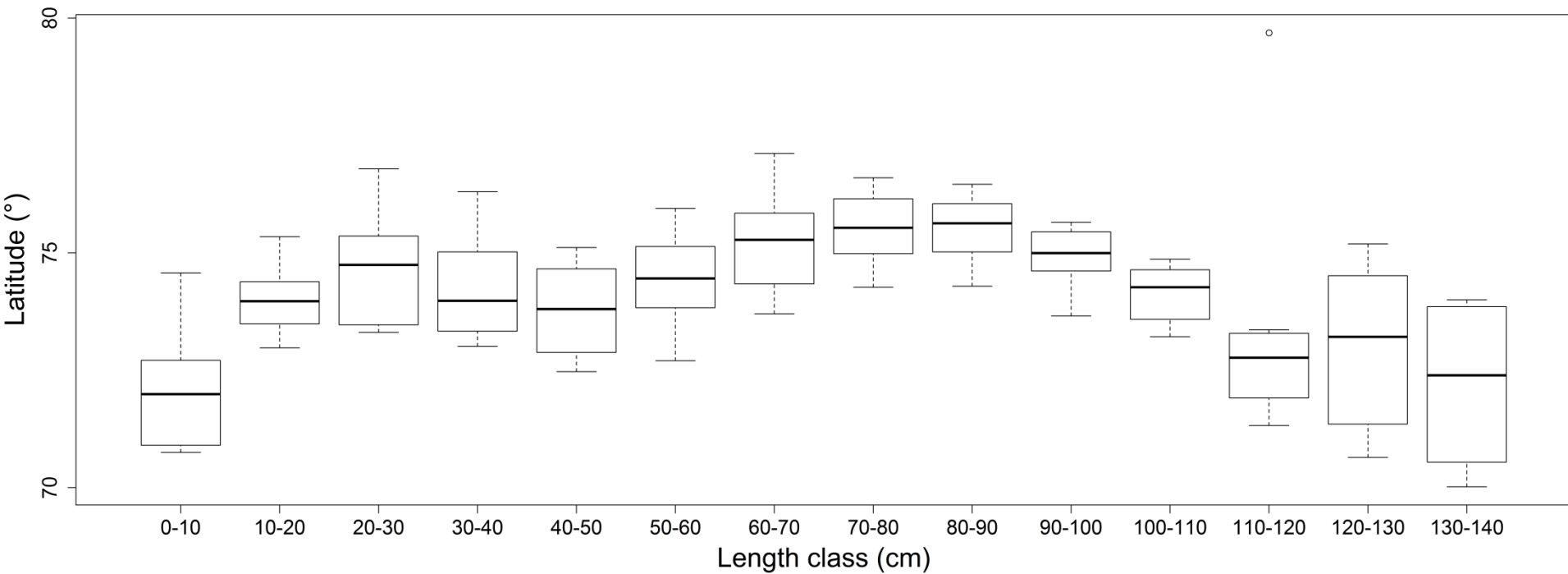


Average distribution 2004 - 2013

Length class	Range (cm)
1	0-10
2	10-20
3	20-30
4	30-40
5	40-50
6	50-60
7	60-70
8	70-80
9	80-90
10	90-100
11	100-110
12	110-120
13	120-130
14	130-140

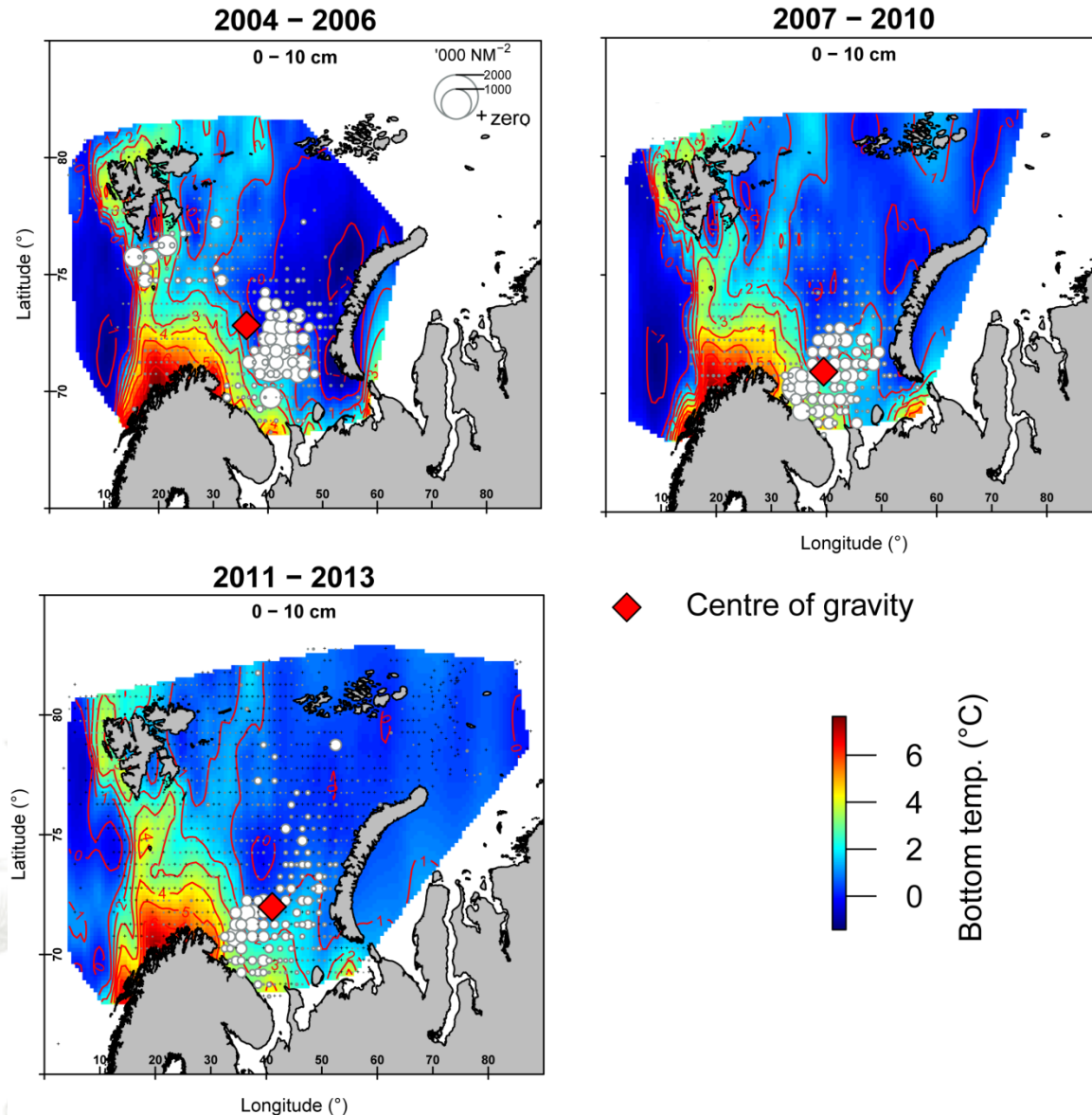


Weighted mean latitude



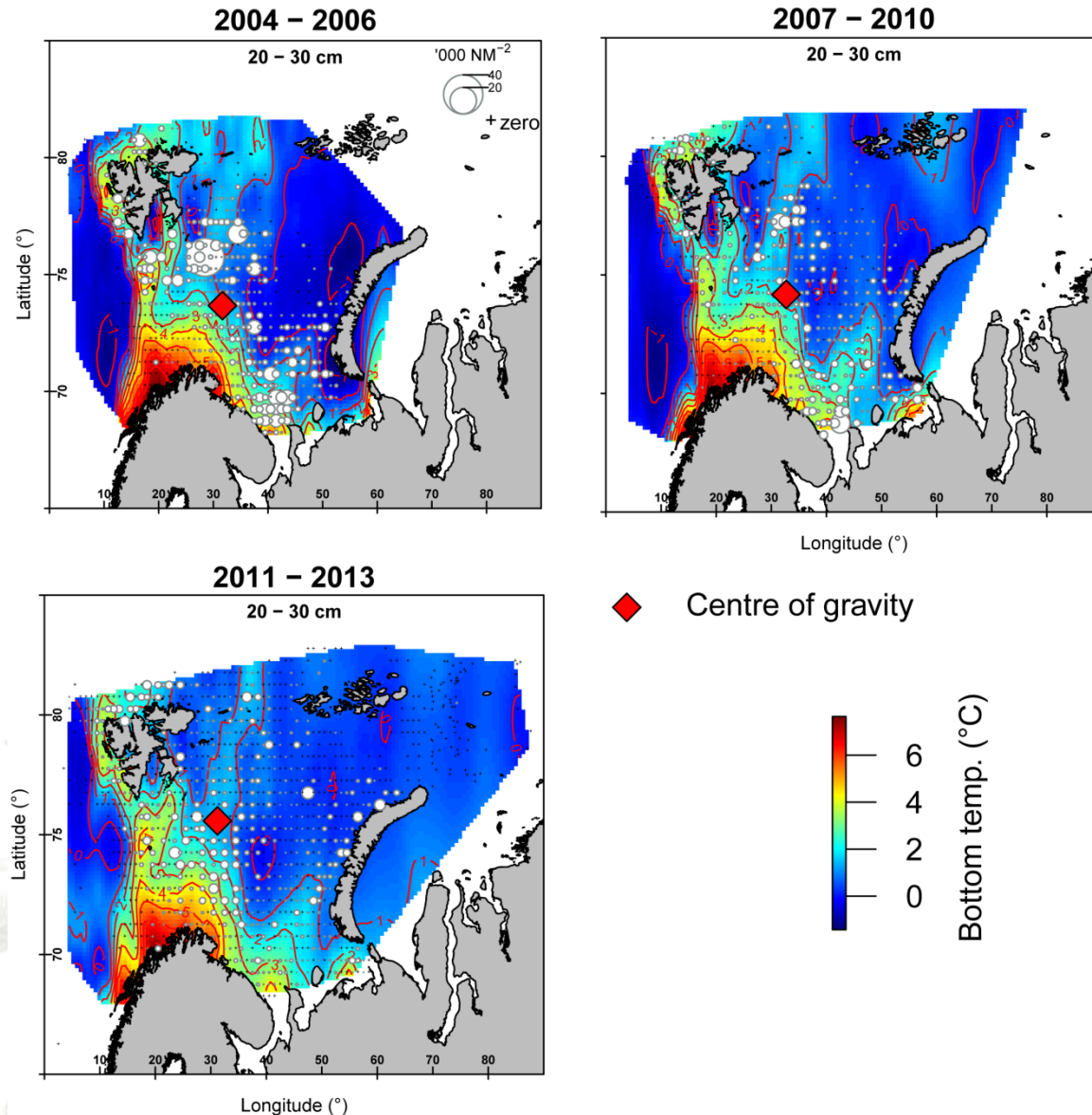
Distribution vs. Environment

Length class vs. Temperature



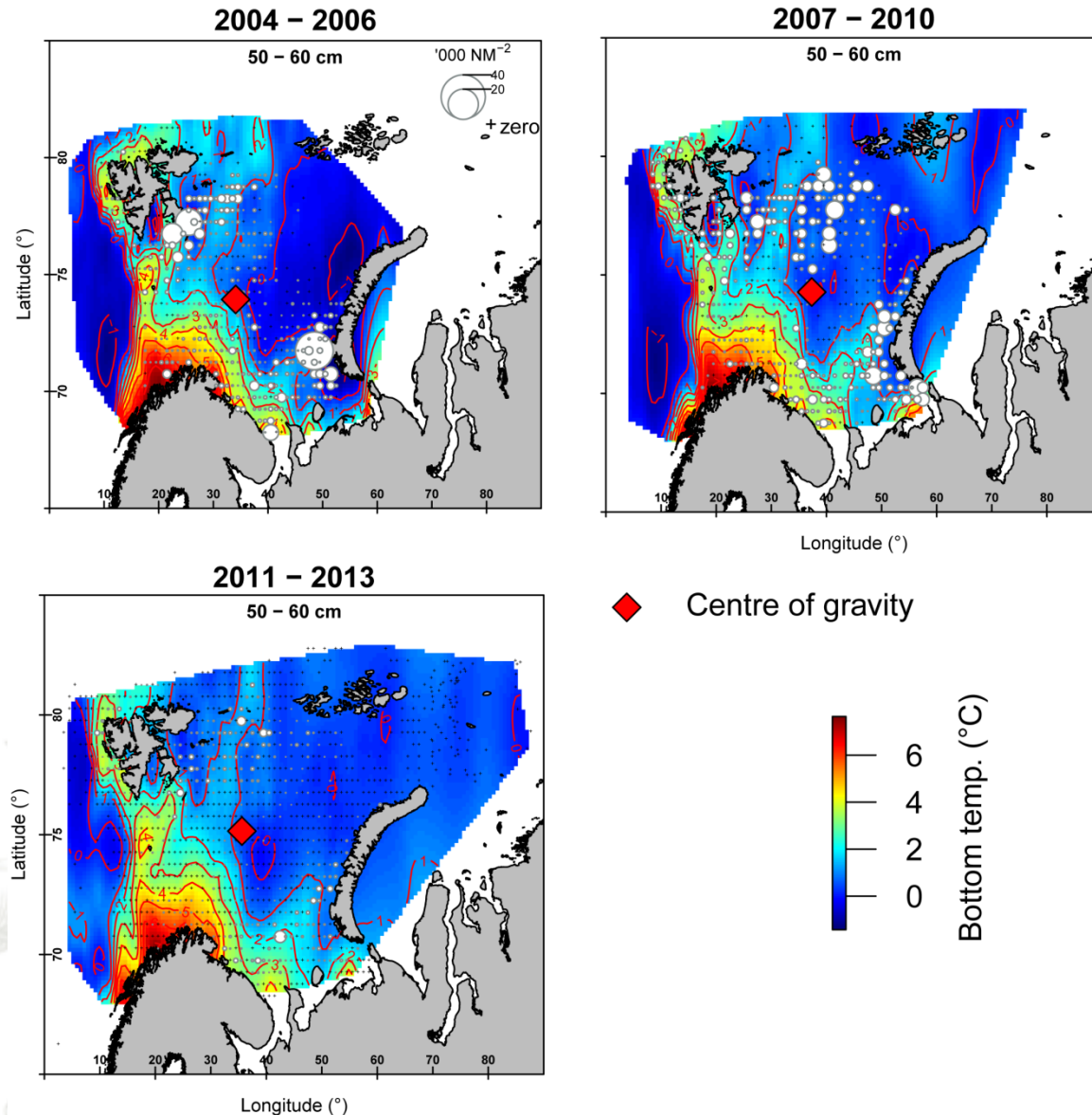
Distribution vs. Environment

Length class vs. Temperature



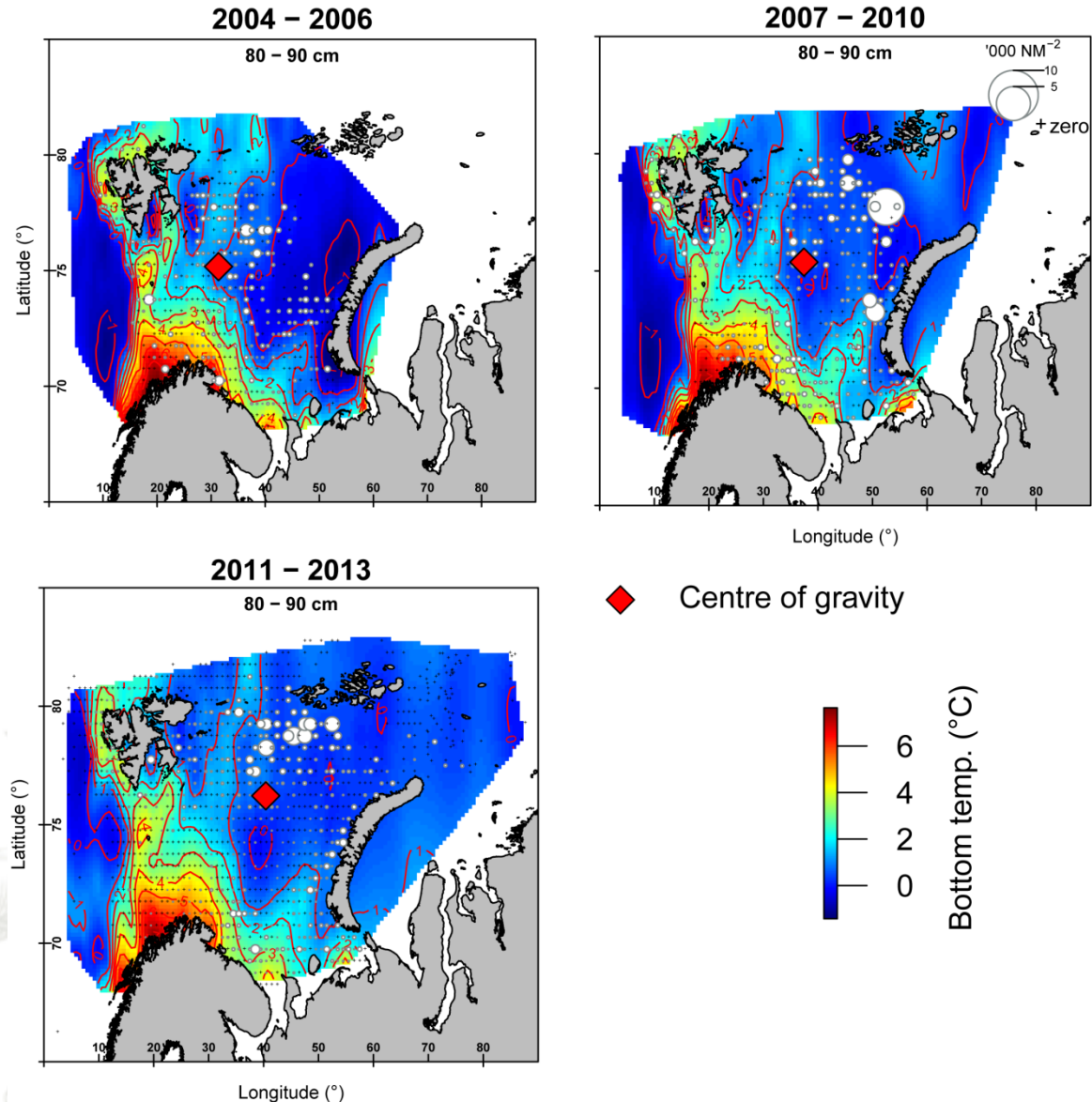
Distribution vs. Environment

Length class vs. Temperature



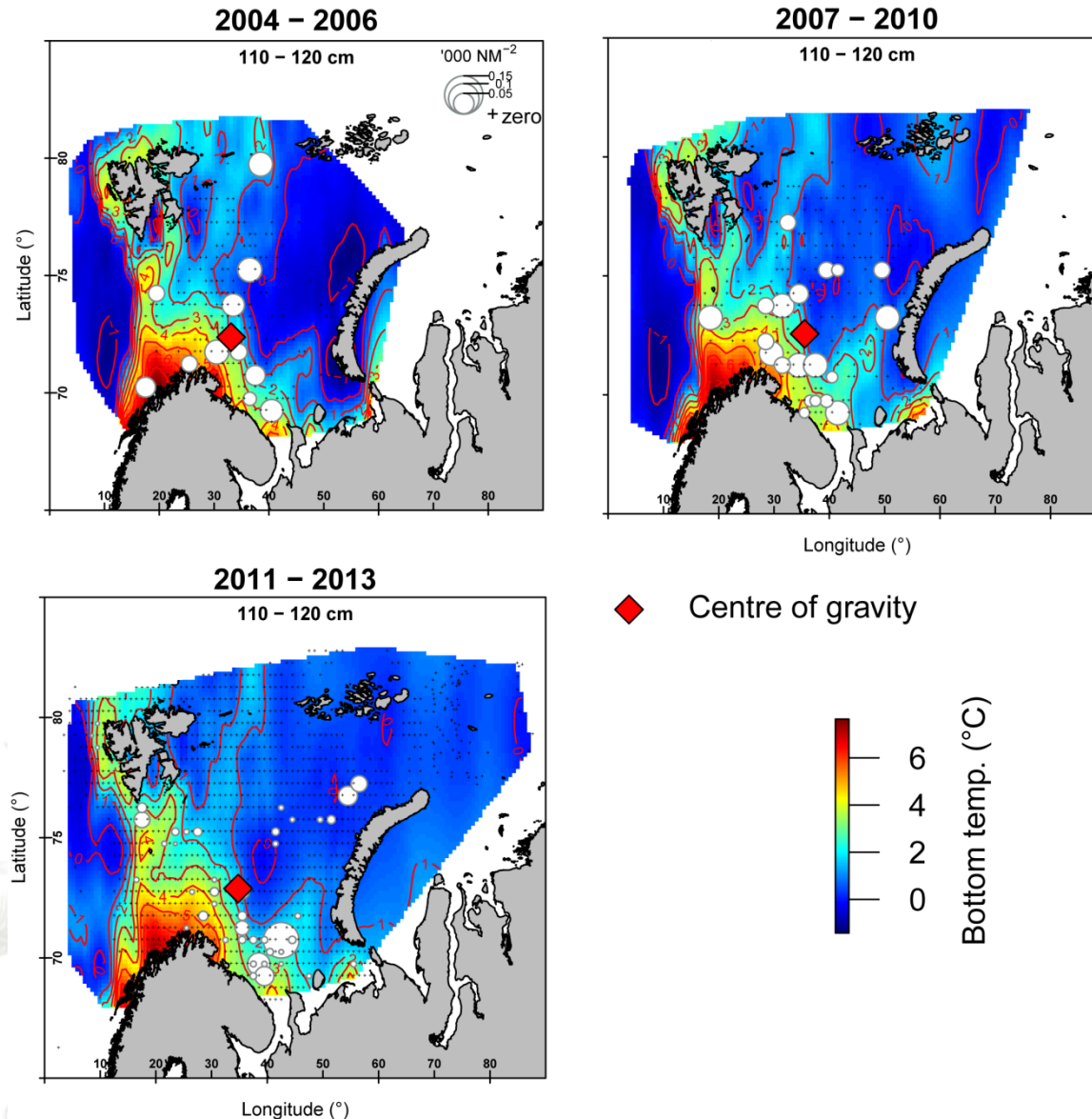
Distribution vs. Environment

Length classes & Temperature



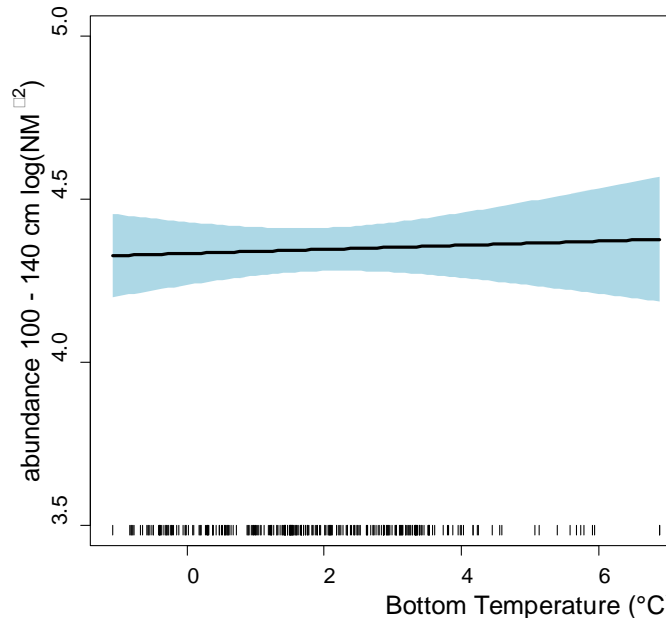
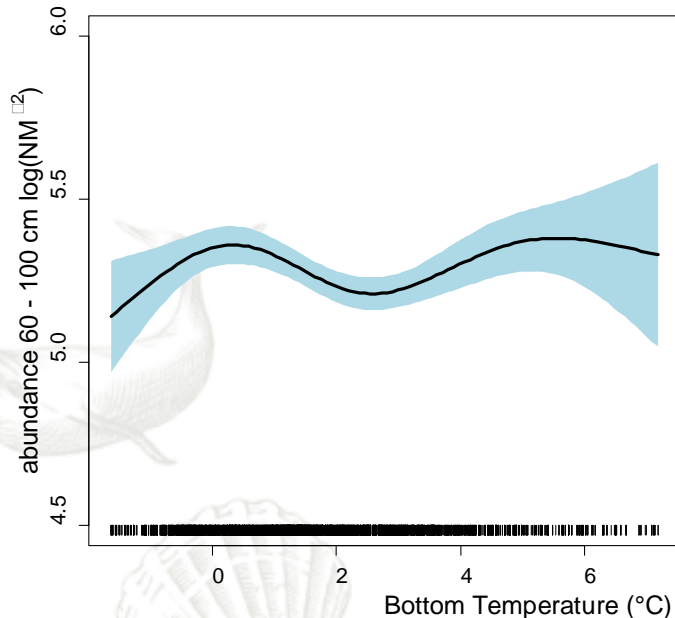
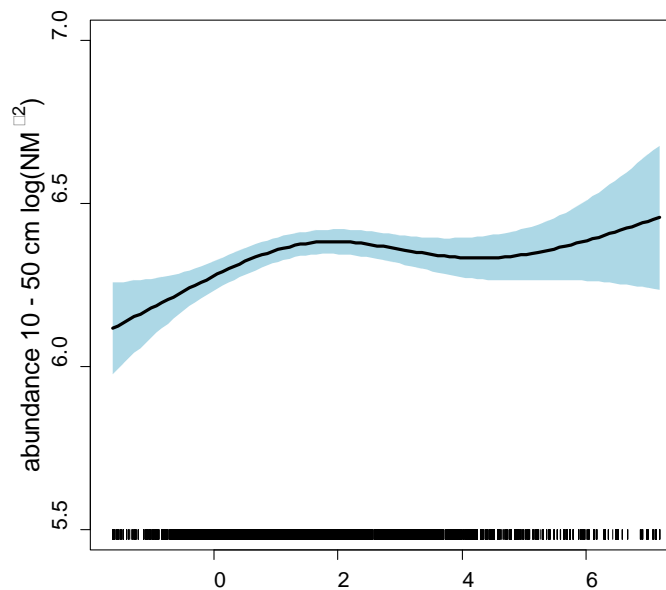
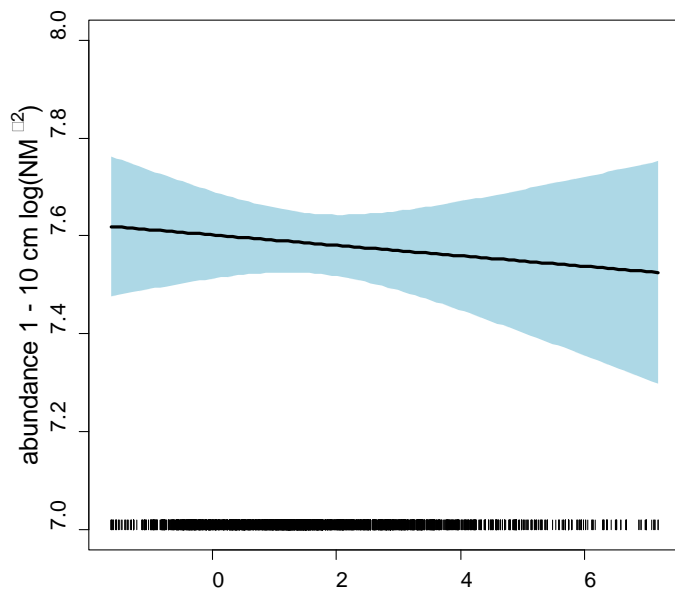
Distribution vs. Environment

Length at age 12 vs. Temperature

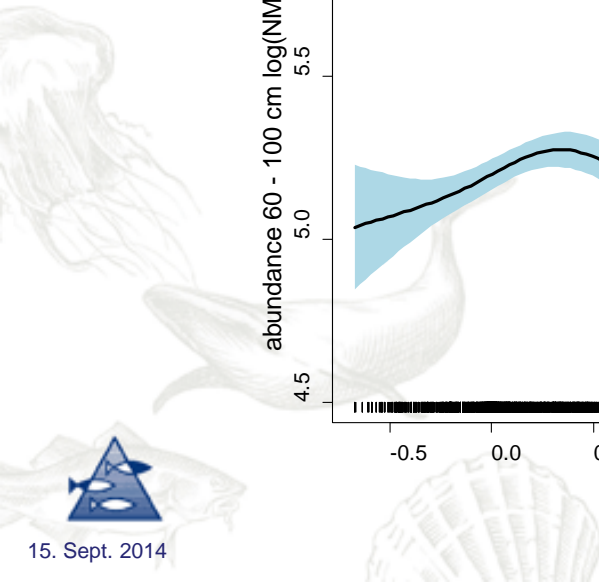
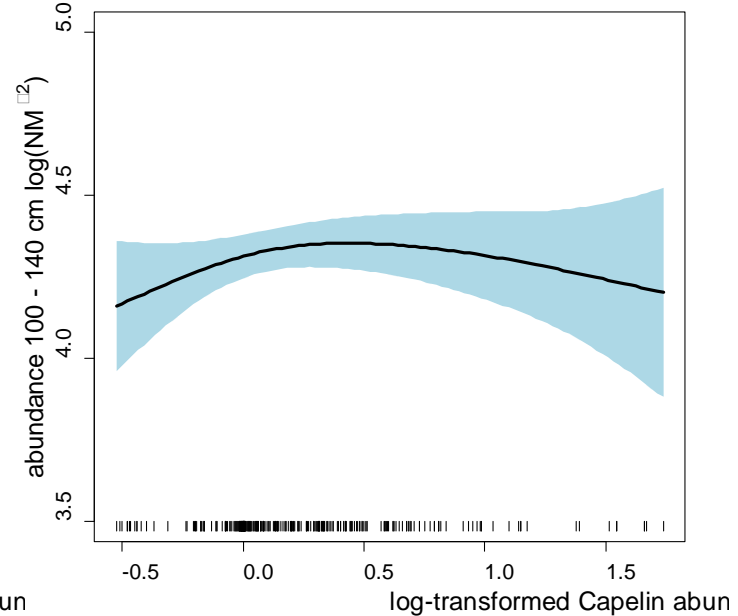
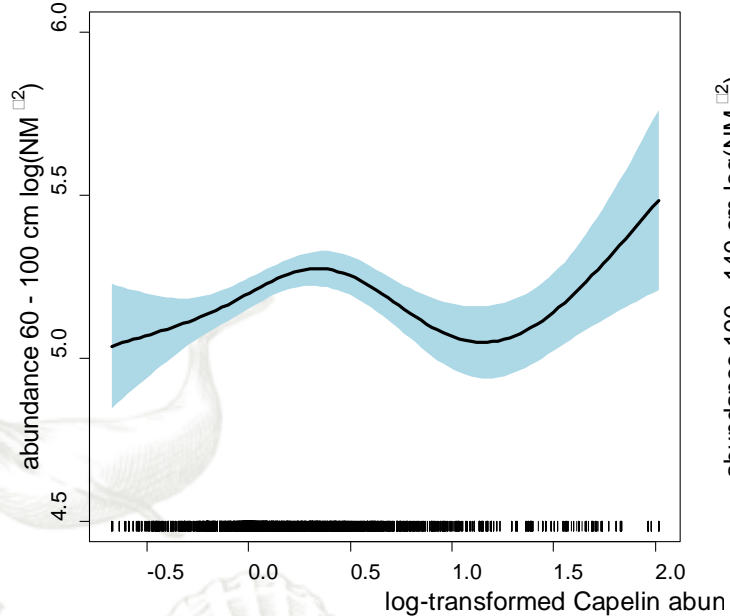
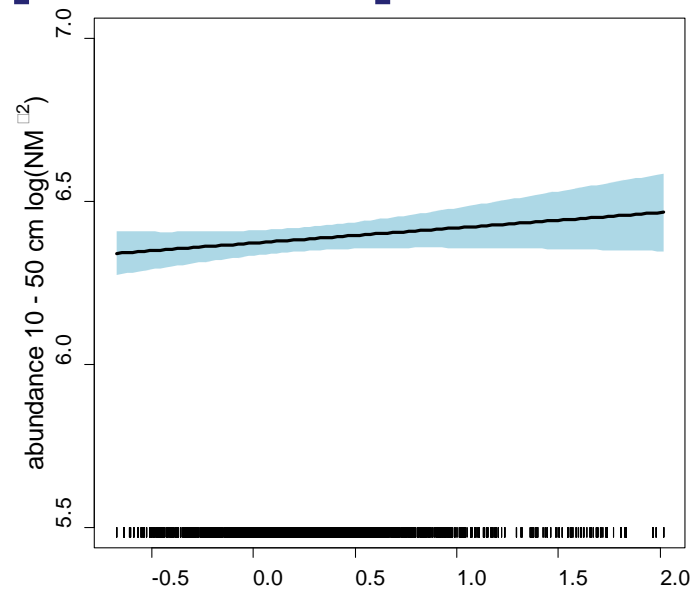
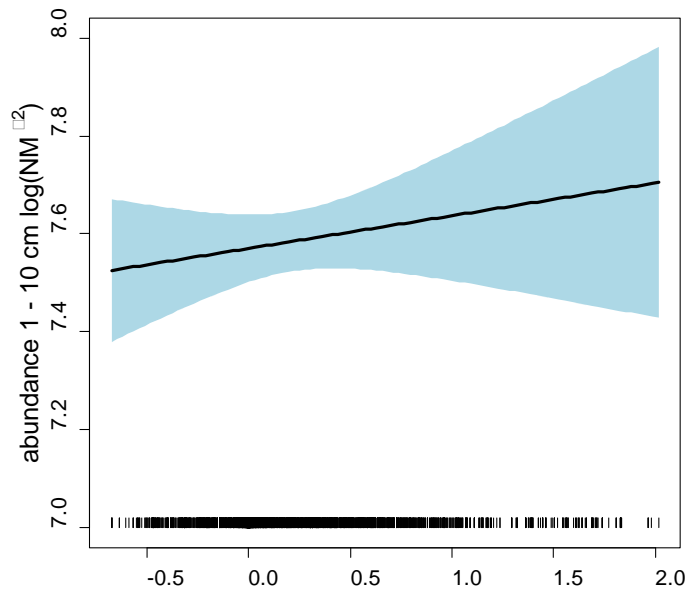


Relationship to temperature

$$g(\mu_i) = \beta_0 + f_1(x_{1i}) + f_2(x_{2i}) + \dots + f_n(x_{ni})$$



Relationship to Capelin



Conclusions

- The largest fish do not occur in the coldest available water
- Smallest cod show little overlap with capelin
- Medium size classes exhibit the highest weighted mean latitude



Where do we go from here?

- Integrate morphometric measurements
- Apply a spatial statistics framework
- Compare to other regions



Some like it cold?



... And maybe they just **do** like it hot.



Acknowledgements

- Captains and crews of the ships involved
- Edda Johannesen (IMR) for the capelin data
- PINRO for data from the Russian sector of the Barents Sea

Thank you!

hannes.hoeffle@imr.no





INSTITUTE OF MARINE RESEARCH
HAVFORSKNINGSINSTITUTTET

