



The rise of a marine generalist predator and the fall of beta diversity

Kari E. Ellingsen¹ | Nigel G. Yoccoz² | Torkild Tveraa¹ | Kenneth T. Frank³ |
Edda Johannesen⁴ | Marti J. Anderson⁵ | Andrey V. Dolgov⁶ | Nancy L. Shackell³

¹Norwegian Institute for Nature Research (NINA), Fram Centre, Tromsø, Norway

²Department of Arctic and Marine Biology, UiT The Arctic University of Norway, Tromsø, Norway

³Ocean Sciences Division, Bedford Institute of Oceanography, Dartmouth, NS, Canada

⁴Institute of Marine Research (IMR), Nordnes, Norway

⁵New Zealand Institute for Advanced Study (NZIAS), Albany Campus, Massey University, Auckland, New Zealand

⁶Polar Branch of the Federal State Budget Scientific Institution "Russian Federal Research Institute of Fisheries and Oceanography" ("PINRO" named after N.M. Knipovich), Murmansk, Russia

Correspondence

Kari E. Ellingsen, Norwegian Institute for Nature Research (NINA), Fram Centre, P.O. Box 6606 Langnes, 9296 Tromsø, Norway.
Email: kari.ellingsen@nina.no

Funding information

Norwegian Institute for Nature Research; Fram Centre; Research Council of Norway, Grant/Award Number: 234359

Abstract

Determining the importance of physical and biological drivers in shaping biodiversity in diverse ecosystems remains a global challenge. Advancements have been made towards this end in large marine ecosystems with several studies suggesting environmental forcing as the primary driver. However, both empirical and theoretical studies point to additional drivers of changes in diversity involving trophic interactions and, in particular, predation. Moreover, a more integrated but less common approach to the assessment of biodiversity changes involves analyses of spatial β diversity, whereas most studies to date assess only changes in species richness (α diversity). Recent research has established that when cod, a dominant generalist predator, was overfished and collapsed in a northwest Atlantic food web, spatial β diversity increased; that is, the spatial structure of the fish assemblage became increasingly heterogeneous. If cod were to recover, would this situation be reversible, given the inherent complexity and non-linear dynamics that typify such systems? A dramatic increase of cod in an ecologically similar large marine ecosystem may provide an answer. Here we show that spatial β diversity of fish assemblages in the Barents Sea decreased with increasing cod abundance, while decadal scale changes in temperature did not play a significant role. These findings indicate a reversibility of the fish assemblage structure in response to changing levels of an apex predator and highlight the frequently overlooked importance of trophic interactions in determining large-scale biodiversity patterns. As increased cod abundance was largely driven by changes in fisheries management, our study also shows that management policies and practices, particularly those involving apex predators, can have a strong effect in shaping spatial diversity patterns, and one should not restrict the focus to effects of climate change alone.

KEYWORDS

β diversity, apex predator, biodiversity, biotic interactions, climate change, fish communities, large scale, marine

This is an open access article under the terms of the Creative Commons Attribution License, which permits use, distribution and reproduction in any medium, provided the original work is properly cited.

© 2020 The Authors. *Global Change Biology* published by John Wiley & Sons Ltd

1 | INTRODUCTION

Ecologists strive to understand the processes responsible for generating and modifying diversity in natural ecosystems (Chase et al., 2018; Ricklefs, 1987). In particular, the study of the spatial variation in species composition, or beta (β) diversity, provides a link between processes operating at a local scale and affecting alpha (α) diversity and processes affecting changes in regional or gamma (γ) diversity. The variability of local species richness trends (Blowes et al., 2019; Cardinale, Gonzalez, Allington, & Loreau, 2018; Vellend et al., 2013) has led to a call for analyses beyond species richness to achieve a more integrated understanding of processes acting at multiple scales (Chase et al., 2018; Hillebrand et al., 2018; Socolar, Gilroy, Kunin, & Edwards, 2016). Teasing apart the relative importance of underlying processes, however, has been difficult, and our understanding of the relative importance of multiple fundamental mechanisms remains limited (Ohlmann et al., 2018; Xing & He, 2019).

Two types of processes have been emphasized: stochastic processes (associated with dispersal-colonization-extinction, ecological drift and priority effects), and deterministic processes (coupled to environmental factors, niche differences and interspecific interactions; Chase, Biro, Ryberg, & Smith, 2009). Stochastic processes will tend to increase β diversity whereas deterministic processes (if they vary little over space and time) will lead to lower β diversity. Some processes, such as those linked to invasion or disturbance, are associated with lower β diversity, even if α diversity increases (Finderup Nielsen, Sand-Jensen, Dornelas, & Bruun, 2019; Iacarella et al., 2018; Stotz, Gianoli, & Cahill, 2019). Other processes, such as biotic interactions and climate change, may increase or decrease β diversity (Socolar et al., 2016). Predators could either strengthen stochastic processes and increase β diversity by reducing population size of all prey populations, or deterministically lead to extinction of rare species and therefore more homogenous communities (Chase et al., 2009). Chase et al. (2009), in one of the first empirical studies to assess the impact of predation on β diversity, found that predatory fish could lower prey β diversity in ponds. Using a model based on the equilibrium theory of island biogeography, Ryberg, Smith, and Chase (2012) suggested that predation effects may depend on feeding behaviour: generalist predators that feed indiscriminately may increase β diversity (and decrease α diversity), whereas specialist predators may decrease β and α diversity by selectively removing only particular prey species. In other empirical studies, the effect of predator-prey interactions on stochastic colonization and extinction processes were idiosyncratic and depended on prey and predator identities (Cirtwill & Stouffer, 2016), and on the relative importance of bottom-up versus top-down effects (Antiqueira, Petchey, dos Santos, de Oliveira, & Romero, 2018).

The effects of variation in climate on β diversity are even less understood (Socolar et al., 2016), and may be regionally specific, depending on species-specific dispersal abilities (Magurran, Dornelas, Moyes, Gotelli, & McGill, 2015; Qian & Ricklefs, 2007). If only a few species are able to alter and broaden their spatial distributions in response to climate change, a reduction in β diversity (biotic

homogenization) might follow (Socolar et al., 2016). Because multiple drivers will impact diversity simultaneously, patterns of change in spatial β diversity may vary as much as those observed for species richness: a recent synthesis of diversity time series found large variation in temporal trends of both local diversity and turnover (Blowes et al., 2019).

Current research in marine ecosystems has focused on identifying linkages between large-scale diversity patterns and thermal tolerances associated with climate variability. For example, Magurran et al. (2015) argued that an increase in the turnover of groundfish assemblages west of Scotland over three decades was due to a spatially uneven pattern of rising ocean temperatures which, in turn, led to an increase in similarity of the fish assemblages over large geographic scales. At a larger spatial scale, Fossheim et al. (2015) suggested that recent warming in the Barents Sea has resulted in a rapid transformation of the fish assemblages, due primarily to the incursion of several large, migratory predator fish species which have displaced some of the resident Arctic fish species, potentially leading to more homogeneous fish communities at the scale of the Barents Sea as a whole. While the focus on the effects of climate change is understandable, many large marine ecosystems have also been affected by changes in trophic interactions, particularly declines in many top predators (Baum & Worm, 2009). The idea that predation might be important in structuring large marine ecosystems has been slow to develop (Frank, Fisher, & Leggett, 2015; Verity & Smetacek, 1996), in contrast to the prominence of predation as a structuring force in benthic and intertidal marine communities (Estes & Palmisano, 1974; Paine, 1980). In freshwater ecosystems, comparative analyses of systems with and without predators, and whole-lake manipulations, have provided compelling evidence for the role of predation in structuring communities (Carpenter & Kitchell, 1993; Chase et al., 2009). In the north-western Atlantic, a natural experiment unfolded during the early 1990s as Atlantic cod (*Gadus morhua*), a large-bodied generalist predator, was overfished and driven to commercial extinction. The absence of cod revealed that it exerted a strong controlling influence on community structure, extending to the base of the food chain. The loss of cod resulted in the emergence of an ecosystem state dominated by a suite of its former prey and meso-predator species (Frank, Petrie, Choi, & Leggett, 2005). Moreover, the reduction in predation pressure associated with the depletion of northwest Atlantic cod also impacted the spatial pattern of co-occurring groundfish species (Shackell, Fisher, Frank, & Lawton, 2012). Furthermore, Ellingsen et al. (2015), using long-term, large-scale monitoring data from the Scotian Shelf, found that fish assemblages became more heterogeneous; that is, the assemblages became more dissimilar from place to place as measured by β diversity (Anderson, Ellingsen, & McArdle, 2006; McGill, Dornelas, Gotelli, & Magurran, 2015) when cod no longer dominated (see Figure 1). Notably, abiotic factors, including bottom water temperature, were unimportant in explaining the changing patterns of β diversity observed on the Scotian Shelf. However, changes in recorded bottom water

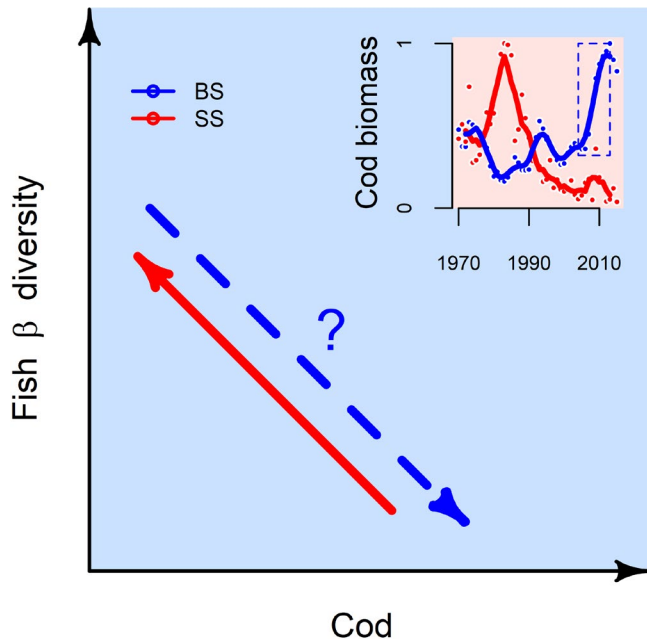


FIGURE 1 Is there a reversible dynamic relationship between apex predator abundance and fish community structure in large marine ecosystems? A recent study on the Scotian Shelf (SS), Canada demonstrated that fish assemblages became increasingly heterogeneous (β diversity increased) with decreasing cod populations (Ellingsen et al., 2015). In contrast, the cod population in the Barents Sea (BS) has increased recently, and we predicted that the return of cod would cause increasing homogenization of fish assemblages (i.e. declining β diversity). Lower values of β diversity correspond to fish assemblages that are more similar from place to place. Inset figure: Y-axis denotes cod spawning stock biomass scaled to a maximum value of 1 for each time series: the SS (red) and the BS (blue). The dashed blue box identifies the time period investigated here

temperature values over the time period examined for the Scotian Shelf were rather small, so it remains unclear how diversity in fish communities might be altered by concomitant effects of cod depletion alongside potential changes in climate.

Recently, the resident cod population in the Barents Sea, a large subarctic ecosystem, increased by more than sixfold since the historic low levels of the 1980s (ICES, 2018; see Figure 1). A major reduction in fishing mortality combined with the near abolishment of illegal, unreported and unregulated fishing practices from the late 1990s to the present were directly responsible for this increase (Kjesbu et al., 2014). The Barents Sea has many similarities to the Scotian Shelf in terms of species composition, thermal environment and availability of high-resolution monitoring data, and thus could provide a test of the generality of the structuring role of cod, in a system where changes in temperature were also substantial (Lind, Ingvaldsen, & Furevik, 2018). Many highly perturbed ecosystems shift from one state to another, but a reversal back to a pre-disturbance state rarely occurs following removal of the perturbation (Scheffer, Carpenter, & Young, 2005). If this process were reversible, we would expect that the recent increase in Barents Sea cod would result in a decline of β diversity, that is, a

broad-scale spatial homogenization of resident fish assemblages. Clearly, a robust test of this hypothesis requires consideration of concomitant changes through time in other potential drivers, such as temperature.

The situation in the Barents Sea permits an assessment of the relative importance of predation by cod versus temperature in structuring fish biodiversity, due to the fact that it is a large, heterogeneous system (Ingvaldsen et al., 2015; Ingvaldsen & Gjørseter, 2013). Specifically, different areas within it have exhibited divergent temporal trends in temperature and abundance of large, mature cod. We delineated large subregions (of approximately equal spatial extent) having contrasting patterns in cod abundance and temperature through time, and the patterns of β diversity within each of these subregions were assessed. This design-based approach (Bråthen et al., 2007; Butsic, Lewis, Radeloff, Baumann, & Kummerle, 2017; Shadish, Cook, & Campbell, 2002) to the analysis of observational data allowed us to disentangle the relative importance of an apex predator (cod) and a physical climate variable (bottom temperature) on the β diversity of the resident fish community. Ten years of monitoring data derived from a systematic, large-scale scientific sampling program conducted annually from 2004 to 2013 were used for the analysis.

2 | MATERIALS AND METHODS

2.1 | Study design

Ground fish data consisted of all commercial and non-commercial fish species sampled by the Institute of Marine Research (IMR), Norway, and the Polar Branch of Russian Federal 'Research Institute of Fisheries and Oceanography' 'VNIRO' ('PINRO' named after N.M. Knipovich), during joint annual ecosystem surveys in the Barents Sea (Figure 2) over a period of 10 years (2004–2013; Eriksen, 2014). Two to three Norwegian vessels and one to two Russian vessels were used each year, and the surveys were run in August–September (duration 39–57 days) when the Barents Sea had least ice cover. The surveys used a regular grid design with stations ca. 60 km apart (with some exceptions), with almost the same geographical position of each sampling station each year. All vessels used a Campelen 1800 bottom trawl (for details on equipment and bottom trawl rigging, see e.g. Michalsen et al., 2013). The trawl time after the trawl had achieved contact with the bottom ranged from 7 to 60 min, and the catches were standardized to number of individuals per 15 min tow (i.e. the median trawl time, obtained by dividing the catch values for each species by the trawl time in minutes and multiplying by 15).

A total of 3,399 trawl sets were included in this study. The number of trawls per year ranged from 257 (in 2009) to 456 (in 2005), and the trawl stations were quite evenly distributed across the Barents Sea, covering a study area of 1.3 million km² (68–82°N, 14–57°E). For each trawl station, depth at the start of trawling was recorded. The depth range of trawl stations was 38–654 m,

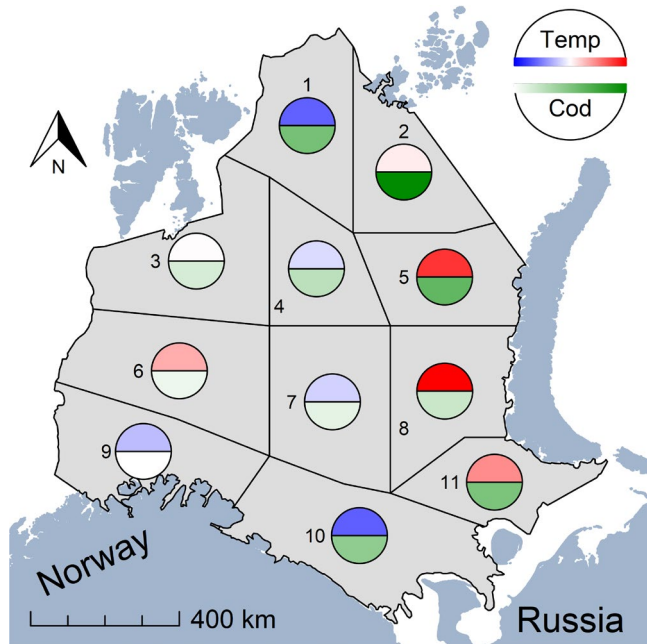


FIGURE 2 Subregional trends in ocean bottom temperature and mature Atlantic cod abundance in the Barents Sea. Eleven contrasting subregions were identified (grey). Upper half of circles shows temporal trends in bottom temperature from negative (blue) to positive (red). Lower half of circles shows temporal trends in cod abundance from white (zero trend) through to dark green (positive trend). See Section 2 for definition of subregions, Figure S7 for region-specific trends in bottom temperature and abundance of mature cod, and Table S1 for summary statistics

with shallowest water in the south-east (mean depth in subregion 11:115 m) and deepest in the west (subregion 6:348 m). The data set from this survey is the most spatially extensive available from the Barents Sea (Johannesen, Høines, Dolgov, & Fossheim, 2012). We have not included data from other surveys of the Barents Sea in our analyses due to data incompatibility, in particular with regard to species' identifications and the restricted spatial extent of other surveys.

The lengths of all cod from each trawl set were measured, and the age of one cod individual from each 5 cm length group was determined by sectioning otoliths. The number of cod per age group per trawl station was calculated using length–age keys. We did not take into account the uncertainty associated with the length–age keys. As the mean age at maturity is around 7 years (ICES, 2018), we counted abundance as the number of cod aged 7 years or older to a maximum of 17 years (here called mature) in our analysis, particularly because our focus was on the role of large, apex predators in structuring fish biodiversity. The mean length of 7 years old cod was 74 cm (Johannesen, Johnsen, Johansen, & Korsbrekke, 2019), and ontogenetic shifts in Barents Sea cod diet (Holt, Bogstad, Durant, Dolgov, & Ottersen, 2019) result in fish becoming a more important prey item for cod with increasing size of cod.

The data primarily consisted of benthic fish species, although other species, including pelagic fishes, were also routinely captured by the bottom trawl (and included in this study). All fish caught were

identified to species level when possible, and for each species, the total number of individuals per trawl was recorded and then standardized per 15 min tow (as described above). Identification keys and taxonomic literature for fish species in the Barents Sea have been incomplete, although older Russian literature exists. There is ongoing work to improve and harmonize species identifications for data obtained from Russian and Norwegian vessels (Mecklenburg et al., 2018; Wienerroither et al., 2011). Difficulties remain regarding identification and unresolved taxonomy for several Arctic fishes, in particular for the families Zoarcidae and Liparidae (Christiansen & Reist, 2013). Juveniles (<10 cm) of the genus *Sebastes* are also difficult to identify. Thus, fish data were organized into two different data sets as follows: (Option 1) All taxa from the eelpout family were classed as 'unspecified' (Zoarcidae spp.), taxa from the snailfish family were classed as Liparidae spp. and juveniles of the genus *Sebastes* spp. were pooled with adults into the family Sebastidae spp., resulting in a regional count of 71 fish taxa (excluding cod) from 2004 to 2013; (Option 2) specimens from the Zoarcidae, Liparidae and Sebastidae families were kept at species level, and recordings at the family or genus level, including juvenile *Sebastes*, were removed, resulting in 95 fish taxa (excluding cod). Bottom temperature data were obtained from CTD (conductivity, temperature and depth) profiles taken adjacent to each trawl set during the ecosystem surveys.

Cod spawning stock biomass (SSB) data for the Barents Sea were obtained from ICES (ICES, 2018) and cod SSB data for the Scotian Shelf were obtained from research survey data, Bedford Institute of Oceanography, Canada (provided by K.T. Frank; Frank, Petrie, Fisher, & Leggett, 2011). Data were scaled to a maximum value of 1 for each time series, representing 4.4×10^6 tons for the Barents Sea and 2.4×10^5 tons for the Scotian Shelf.

2.2 | Design-based definition of subregions

We used a design-based approach (Bråthen et al., 2007; Shadish et al., 2002) to assess the relative roles of increases in mature cod abundance versus changes in bottom temperature on the β diversity of fishes. More specifically, we sought to partition the Barents Sea into spatially contiguous subregions having approximately similar areas (so as not to confound α diversity immediately with β diversity), of regular shapes (not snake-like or elongated, to avoid edge effects) and with consistent and contrasting patterns of change through time in (a) cod and (b) temperature. It was also important to identify regions of different types that were not geographically segregated (i.e. to avoid spatial pseudo-replication—it would not do to have all subregions of a similar type in the north and all regions of a different type in the south).

We defined subregions of the Barents Sea with different annual trends (over 10 years) in average bottom temperature and average abundance of large, mature cod (7+ years, i.e. mean length ≥ 74 cm; Johannesen et al., 2019; $\log(x + 1)$ transformed). As the sampling grid and survey routes were not identical from year to

year, we did this in two steps. First, we interpolated values for cod and temperature at each point on a joint grid of 50×50 km for each year using an additive model with a bivariate tensor product smooth of the spatial coordinates (given in the Lambert Equal Area Projection), and a smooth term for depth (Wood, 2006). In addition, for temperature, we included a smooth effect of sampling date as temperature was still changing in the later part of summer. Second, we regressed interpolated values of cod and temperature (standardized to 200 m depth and median survey date 3 September) versus year to describe the temporal changes in these two variables separately at each point in the spatial grid (Figure S1a). We then defined subregions of approximately similar sizes guided by maps of the regression coefficients and quantiles of the distribution of these coefficients across areas and years. For temperature, we identified areas with either stable/decreasing ($<0.02^\circ\text{C}/\text{year}$) or increasing temperature ($>0.02^\circ\text{C}/\text{year}$), that is, temperature changes either below or above the median, respectively. For cod, we identified areas with stable ($<0.19/\text{year}$), medium increase ($0.19\text{--}0.38/\text{year}$), or large increase ($>0.38/\text{year}$) in cod abundance, that is, changes in (log) cod abundance within the first, second or third tertile of the ordered distribution of coefficients respectively. This resulted in 11 subregions (Figure S1b). We investigated spatially constrained classification methods, but they resulted in subregions of widely different sizes that were therefore unsuitable for comparative analyses of β diversity. Importantly, the subregions were defined based only on patterns of changes in the drivers (cod and temperature) and not on any preliminary analyses of changes in biodiversity, per se. In addition, we note that measures of β diversity are intrinsically scale dependent (Anderson et al., 2011); hence, our results and associated inferences for β diversity are therefore only relevant for the spatial scale of the subregions (γ) and standardized replicate trawl units (α) we chose to use. More specifically, the areas of the subregions ranged from 79,085 to 160,413 km² (median areal extent = 110,738 km²). An investigation of the scale dependency of the effects of drivers on diversity patterns was not pursued further here.

To assess if temperature recorded during the survey in August–September reflected temperatures year-round, we compared the monthly temperature values obtained from an independent data set, along a transect located in the SW part of the Barents Sea, between Fugløya and Bear Island, which cover inflow of Atlantic and coastal water masses to the Barents Sea (Trofimov & Ingvaldsen, 2018). Correlations were always high, varying between 0.67 (for January–August) and 0.89 (for April–August; see Figure S2). Thus, we considered our measures of temperature to be a reasonable proxy for the annual average temperature regimes occurring within each subregion, but we acknowledge that correlations between seasons may vary over time and space (Boitsov, Karsakov, & Trofimov, 2012).

We also considered a classification of the trawls based mainly on topography, a classification based on temperature (Stige et al., 2014), and the Atlantis classification based on hydrography, depth

and biology (Certain & Planque, 2015; Figure S3; Tables S1 and S2). All classifications performed substantially better in predicting temperature and mature cod abundance than a model without any spatial classification (Table S1), highlighting how spatially variable temporal trends have been within the Barents Sea. Our design-based classification based on cod and temperature had lower widely applicable information criterion (WAIC; Vehtari, Gelman, & Gabry, 2017; Watanabe, 2013), and explained a larger amount of variation in cod and temperature than divisions based on either topography or temperature (Table S1). The Atlantis division performed better in explaining temporal trends in cod and temperature (Table S1) but had 30 subregions that varied greatly in size (Table S2; Figure S3). Also, several of the Atlantis subregions at the fringe of our study area had fewer than three observations in some years (Figure S3). In contrast, our cod-and-temperature design-based division consisted of 11 similar-sized subregions (Table S2). We therefore did ensuing analyses of β diversity within each subregion over time using these 11 design-based subregions only.

2.3 | Biodiversity measures

All measures of biodiversity were calculated excluding cod. This ensured that our models did not confound predictor variables (cod and temperature values measured concomitantly in each subregion in each year) with the response variables (non-cod fish species caught in research trawls). Spatial β diversity of fishes was measured as the average distance-to-centroid (Anderson et al., 2006) among all trawl sets within each subregion in each year on the basis of four different dissimilarity measures: (a) modified Gower: quantitative, variation in relative log abundances, i.e. $x' = \log_{10}(x) + 1$, unless $x = 0$, in which case $x' = 0$ (Anderson et al., 2006); (b) Raup–Crick: presence/absence, variation in species identities that omits the effects of variation in number of species (Chase, Kraft, Smith, Vellend, & Inouye, 2011; Raup & Crick, 1979); (c) Jaccard: presence/absence; and (d) Chao–Jaccard: which includes the effect of unseen species (Chao, Chazdon, Colwell, & Shen, 2005). We measured temporal changes in spatial β diversity within each subregion. The terms ‘spatial β diversity’, characterizing dissimilarity among assemblages over space for one time period, and ‘temporal changes in spatial β diversity’, that is, here: temporal change in β diversity within each subregion, should not be confused with the term ‘temporal β diversity’ which is a measure of change in community composition through time, often quantified as the dissimilarity between each time step and the time-series baseline (see e.g. McGill et al., 2015). We report ‘spatial β diversity’ as ‘ β diversity’ throughout the article. All biodiversity measures were calculated on each fish data set (Options 1 and 2) after excluding cod. Jaccard and Chao–Jaccard values were highly correlated with one another (Figure S4), suggesting that detection did not affect estimates of β diversity. Because α diversity, measured as the annual mean number of

species in all trawl sets within each subregion, varied temporally (see Figure S5c), we used Raup–Crick rather than either of the two Jaccard measures. In general, however, all three measures gave similar results.

2.4 | Statistical analysis

Prior to analyses and to define the design, bottom temperature data were standardized to 200 m depth and a common median survey day (3 September) for each year (hereafter referred to as bottom temperature). This was done to facilitate comparison of bottom temperature over space and time in the Barents Sea where bottom depth varies and since survey route and therefore survey date varied between years. There was, however, a strong relationship between the observed and standardized bottom temperature values ($r > .9$ for all years). In all analyses of β diversity, we used the standardized bottom temperature. The number of trawl sets varied per subregion and year, ranging from 8 (subregion 4 in 2008) to 95 (subregion 6 in 2006). As variation in effort and spatial extent of sampling can affect diversity, due to the species–area relationship (Crist & Veech, 2006), spatial extent was quantified as the area of the spatial convex hull of the group of trawl sets within each subregion for each year. Mean spatial extent within each subregion varied from 54,689 km² (subregion 4) to 115,975 km² (subregion 3) with the largest range between years in subregion 1 (58,244 km²) and the smallest range between years in subregion 6 (10,584 km²). Pairwise plots of predictor variables (Figure S6) revealed no systematic collinearity between predictor variables among subregions, suggesting that our design was robust and valid for the purpose of disentangling potential effects of cod and temperature, as well as relevant covariates.

We used a hierarchical Bayesian framework (Gelman & Hill, 2007) to model how β diversity changed over time, in response to changes in mature cod abundance and bottom temperature within each subregion, using the ‘rstanarm’ library with default priors in R (Goodrich, Gabry, Ali, & Brilleman, 2019; R Core Team, 2018). Note that, although we naturally expect geospatial autocorrelation among subregions and potentially among trawls within subregions, quantitative inferences regarding estimated parameters (and associated errors) are indeed accurate and intact, provided they are restricted to the sampling extent of the Barents Sea only, and also to the specific 10 year time period of this investigation, which indeed is our objective here (de Gruijter & ter Braak, 1990; Pawley & McArdle, 2018). We explored models with a random intercept for each subregion, and models where both the intercept and the slope were allowed to vary for each subregion. We explored the performance of competing models using both WAIC and Leave-One-Out cross-validation Information Criterion (LOOIC) as the latter can be more robust in the case of weak priors or influential observations (Vehtari et al., 2017). We calculated the marginal (fixed effects only)

and conditional (fixed plus random effects) r^2 for all models (Nakagawa & Schielzeth, 2013). We standardized the observations by subtracting the mean and dividing by the standard deviation. We present results using (a) unstandardized predictors; (b) standardized predictors; and (c) standardized response and predictor variables. This facilitates comparison of the magnitude of the effects in terms of the regression coefficients for predictor variables on their original measurement scales (unstandardized) and also the relative magnitude of effects of different predictor variables (standardized) on the different diversity measures (Gelman & Hill, 2007). We included both the spatial extent and the bottom depth as additional predictor variables (covariates) in our analyses. As expected, there was a negative effect of water depth on β diversity (more homogeneous assemblages occurred with increasing depth), and a positive effect of spatial extent (β diversity increased with increasing area; Table S3). We did not include measurement errors for cod and temperature values, as it would have required a complex statistical model of their spatial structure and local measurement variability, which is not known (Reeves, Cox, Darby, & Whitley, 1998). Hence, our models and inferences were conditional on the observed values for cod and temperature. When the 95% credible intervals of the posterior distribution of a regression coefficient broadly overlapped with 0, we considered there was no evidence for an effect of that regressor (Mysterud, Yoccoz, Langvatn, Pettoelli, & Stenseth, 2008). We did not use any hard threshold for differences in WAIC or LOOIC values, but combined these values with consideration of the parameter estimates from each model in an overall heuristic assessment (McShane, Gal, Gelman, Robert, & Tackett, 2019). In addition to β diversity, we also examined effects of cod and temperature on changes in α diversity through time. However, there was no evidence for an overall temporal change in α diversity at the scale of the subregions (Tables S3 and S4; Figure S5c). Neither mature cod abundance nor bottom temperature could explain variation in α diversity (Table S5).

Analyses were carried out using the two alternative fish data sets with different levels of taxonomic resolution (Options 1 and 2) to elucidate how uncertainty in species' identifications might impact our results and conclusions. Results based on Options 1 and 2 are presented in Tables S3–S5. As expected, the reduced data set (Option 1, where some taxa were lumped into groups) reduced variation among subregions, although the overall patterns of change in β diversity over time were similar to the results obtained by using the data set with more taxa (Option 2). In what follows, we present results based on Option 2.

3 | RESULTS

3.1 | Subregional changes in ocean temperature and Atlantic cod

Bottom temperature increased most dramatically in the east (0.8–1.0°C per decade), particularly in subregions 5, 8 and 11

(Figure 2), whereas declining bottom temperatures typified the north (subregion 1) and south (subregions 9 and 10) at a rate of -0.6°C over 10 years (Figure 2; Figure S7). Overall, roughly half of the subregions either warmed or cooled. Due to the large geographic extent of the Barents Sea, average bottom temperatures differed by about 5°C between the south-west and the north-east (Figure S7).

Temporal patterns of mature cod abundance ranged from almost no change in the south-west to large increases in the north, north-east (subregions 1, 2 and 5) and south-east (subregions 10 and 11; Figure 2; Figure S7). In subregion 1, where one of the largest decreases in bottom temperature occurred, cod abundance also exhibited a large increase. Conversely, some subregions showed increases in both cod and temperature (5, 8 and 11). Clearly, a mixture of opposing and matching temporal trends between cod abundance and temperature was apparent.

3.2 | Testing for homogenization of fish assemblages within subregions

There was an overall decrease through time in β diversity (i.e. increasing spatial homogenization) across 11 subregions (Figure 3; Table S3; β diversity was based on the modified Gower dissimilarity metric, see Section 2). The best overall model (according to WAIC; see Section 2) allowed both the slope and intercept to vary among

subregions; thus, the rate of change in β diversity through time varied across the subregions (Figure 3; Table S4). The largest decrease occurred in the central part of the Barents Sea (subregions 4 and 7; Figure 3; Figure S5a), and there was no latitudinal gradient in β diversity across the subregions of the Barents Sea (Figure S5). This model explained 36% of the marginal variation (fixed effects only) and 64% of the conditional variation (fixed and random effects; see Section 2; Table S4) in β diversity. In general, analyses of β diversity based on another dissimilarity metric (RauP-Crick; see Section 2) exhibited similar patterns (Tables S3 and S4; Figure S5b).

3.3 | Drivers of changes in β diversity

When comparing the effects of the two main drivers, bottom temperature and abundance of large, mature cod, the declining trend in spatial β diversity was best explained by cod abundance (Figure 4; Table S5), supporting our original prediction (Figure 1). There was variation in the magnitude of this effect at the subregional scale, with the largest impact of cod abundance on β diversity occurring in the central part of the Barents Sea (Figure 4). The model allowing for variation in the effect of cod abundance among subregions performed slightly better than a model without such variation (based on WAIC: -315.6 vs. -315.1 ; Table S4). In contrast, no effect of bottom temperature on changes in β diversity was evident (Figure 4; Table S5).

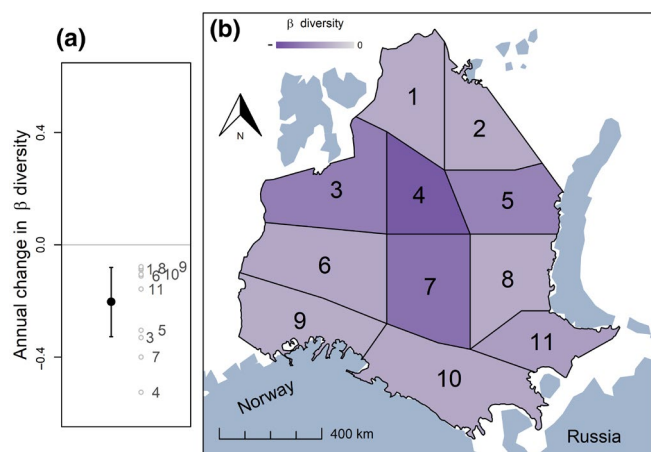


FIGURE 3 Changes in fish β diversity through time. (a) Overall estimated change in β diversity (based on the modified Gower dissimilarity measure) per year from a model assuming a constant slope among subregions (filled black circle) with 95% credible intervals. Individual estimates of the slope from a model allowing for differences among subregions are also shown (open grey circles with numbers indicating subregions). (b) Map of estimated change in β diversity per year for each subregion (as shown in a); darker violet colours indicate a more negative slope (i.e. increasing homogenization). See Tables S3 and S4 for summary statistics, and Figure S5a for temporal changes in β diversity within each subregion based on simple regressions

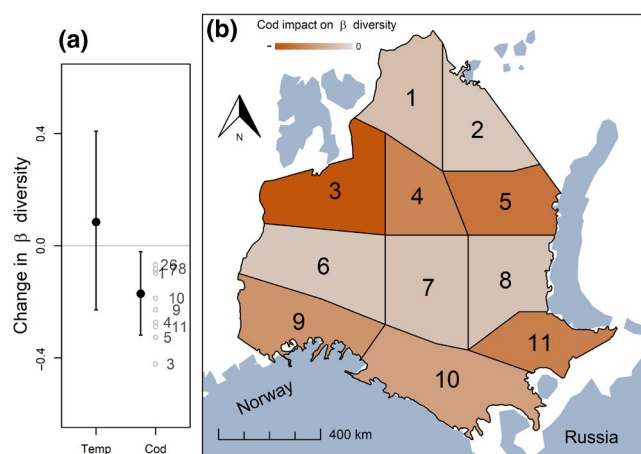


FIGURE 4 Drivers of changes in fish β diversity. (a) Overall estimated effects of mature cod abundance (7 years and older) and bottom temperature ($^{\circ}\text{C}$) on β diversity (based on the modified Gower dissimilarity measure) from a model assuming equal slopes among subregions (filled black circles) with 95% credible intervals, and estimates of cod effects on β diversity from a model allowing for differences among subregions are also shown (open grey circles with numbers indicating subregions). (b) Map of estimated effects of mature cod abundance on β diversity for each subregion (as shown in a); darker orange colours indicate greater negative effects. See Tables S4 and S5 for summary statistics

4 | DISCUSSION

Here, we document a decadal-scale pattern of spatial homogenization of fish assemblages in the Barents Sea. This decline in β diversity can be explained by an increase in abundance of cod, a generalist apex predator. Our study supported the prediction generated from a smaller but ecologically similar geographic area (i.e. the Scotian Shelf, one-tenth the size of the Barents Sea; Ellingsen et al., 2015), underscoring the significance of these earlier findings. The design-based approach (see Section 2) provided an effective means of disentangling the relative importance of potential drivers of biodiversity in this large and complex marine ecosystem (Bråthen et al., 2007; Butsic et al., 2017; Shadish et al., 2002). We infer from this collective work across the North Atlantic that a marine apex predator, whether increasing or declining in population size, performs a fundamental role in shaping the β diversity of fish assemblages in large marine systems. Taken together, the results obtained from these two systems, which show that divergent trends in cod abundance yield predictable and contrasting biodiversity effects, demonstrate the potential for reversible community-level responses to large-scale fisheries management.

The absence of any evidence that bottom temperature affects β diversity may seem surprising, given recent studies highlighting the impacts of climate change on diversity (e.g. Blowes et al., 2019; Magurran et al., 2015; Thuiller, Lavorel, Araújo, Sykes, & Prentice, 2005). There are several possible reasons for the discrepancies between our results and those from previous studies. First, most studies have addressed changes in α diversity (and in particular species richness), and very few have addressed changes in β diversity, particularly in large marine ecosystems (Socolar et al., 2016). Second, our study observed relatively small changes in temperature (at most +1°C) over just 10 years. Temperature ranges for fish species in the Barents Sea are often wide (A.V. Dolgov, unpublished data; see e.g. Wienerroither et al., 2011), so we might not expect impacts on fish communities based on changes in temperatures of ca. 1°C. Such changes are reasonably large, however, compared to overall changes observed since 1950 for the Barents Sea (ca. +2°C; Trofimov & Ingvaldsen, 2018) and also compared to the significant impacts on fish communities reported from the North Sea in response to only a 0.5°C change in summer near-bottom temperatures (e.g. Magurran et al., 2015; Rutterford et al., 2015). Third, if temperatures become more homogeneous across a large area over time, then large-scale β diversity may well be reduced (as in Magurran et al., 2015). The heterogeneous changes in subregional average temperature values observed in our study through time may not correspond to an increased homogeneity of temperature at the broader scale of the Barents Sea as a whole (see also Årthun, Eldevik, & Smedsrud, 2019, for projected changes). Interestingly, there was no latitudinal gradient in β diversity across the subregions of the Barents Sea, so replacing northern, arctic communities by southern, boreal communities may not affect β diversity. Further studies should focus on species-specific dispersal rates and how they are related to local climate velocities.

How can an increasing apex predator population have a homogenizing effect on communities? Ryberg et al. (2012) suggested that

generalist predators will increase β diversity because they prey randomly irrespective of the prey species, whereas specialist predators may decrease β diversity by removing species underlying species turnover. Our results seem to contradict their findings, and one reason may be that what matters is the spatial heterogeneity of the cod predation pattern compared to the spatial heterogeneity of the fish communities. This has been emphasized when studying the impacts of herbivory on plant communities (Adler, Raff, & Lauenroth, 2001), another form of predation. If predation by cod is spatially very homogeneous, as would be expected from a wide-ranging, opportunistic predator (Holt et al., 2019), then we would expect spatial heterogeneity to decrease (Adler et al., 2001). Both experimental and observational studies have also shown that when predation intensity is relatively high the interaction strengths among competing species are lessened, allowing for increased coexistence and therefore declining spatial segregation (Terborgh, 2015). In the absence of predation, however, competitive relationships are stronger, leading to reduced levels of coexistence and heightened levels of spatial segregation. The degree of spatial segregation is a measure of spatial species turnover and therefore of β diversity (Ulrich, Zalewski, & Uvarov, 2012). Furthermore, cod predation on small arctic fishes (liparids, cottids, etc.; Holt et al., 2019) may lead to their local extinctions and therefore be an additional factor leading to community homogenization (Chase et al., 2009).

Whether the observed changes in β diversity was the result of direct predation from cod, or indirectly through relaxed competition or predation from species heavily preyed upon by cod remain unresolved. Identifying the myriad of possible links among species in the cod's food web was beyond the scope of the current study, and we acknowledge that available time series may not hold sufficient information to disentangle these effects as interactions at the species-to-species level, although our β diversity approach, which examines changes in the spatial structure of the entire fish community concomitantly did so. What we have demonstrated, is that increased cod abundance in the Barents Sea resulted in changes in the entire fish community as shown by the decrease in β diversity in response to increased cod abundance.

The measurement of changes in spatial β diversity through time has added an important new dimension to our knowledge of marine biodiversity. Declines in marine β diversity (i.e. increasing spatial homogenization) found previously have been attributed solely to climate change, and have been considered to be a more important problem than the loss of local species richness (Magurran et al., 2015). Our results highlight a contrasting view. Fisheries management policies and practices, particularly those involving apex predators, can have a strong effect in shaping overall biodiversity patterns, possibly more than climate change alone. The potential interactive effects of simultaneous changes in human interventions, biotic and abiotic drivers all need further investigation to achieve greater clarity for future decision-making that can enhance and sustain biodiversity in marine ecosystems. Such interactions among multiple drivers are, however, poorly understood (Socolar et al., 2016; Turner et al., 2020). Estimating interactions also requires considerably larger sample size than for estimating main effects (Gelman, 2018),

particularly when drivers are correlated (Baum & Worm, 2009). Even if our design-based approach allowed us to disentangle the main effects of cod abundance and temperature changes on spatial β diversity, reliable estimates of interactions should be based on larger sample sizes.

The recent management measures directed towards cod in the Barents Sea, in conjunction with favourable environmental conditions, proved to be highly successful and resulted in a remarkable increase in their biomass. Equally dramatic was the associated change in the spatial structure of co-occurring fish species which may ultimately prove to be beneficial to the persistence of the current ecosystem state. Our study highlights the large impacts on marine ecosystems resulting from fisheries management practices, especially when involving large generalist predators such as cod. Clearly, future management decisions involving fisheries in the Barents Sea will require the inclusion of a dynamical trophic perspective, including climate variability, to better understand how fisheries affect trophic interactions. The utility of such an approach may be judged, in part, by the spatial configuration of its component parts which could potentially become part of a 'tool box' of indicators associated with an ecosystem-based approach to fisheries management.

ACKNOWLEDGEMENTS

We are grateful to many technicians, scientists and research vessel crew of IMR and PINRO who participated in surveys and otherwise contributed to the study. We acknowledge support from the Research Council of Norway (project no. 234359), the Norwegian Institute for Nature Research and the Fram Centre.

CONFLICT OF INTEREST

The authors declare that they have no conflict of interest.

AUTHOR CONTRIBUTIONS

K.E.E., N.G.Y., T.T. and M.J.A. designed the study. A.V.D., E.J. and K.T.F. contributed data. E.J. and T.T. processed data. N.G.Y. and T.T. analysed data. K.E.E. drafted the manuscript with input from N.G.Y., T.T., K.T.F. and M.J.A. N.L.S., E.J. and A.V.D. contributed substantially to revisions.

DATA AVAILABILITY STATEMENT

Data at the subregional scale that support the findings of this study and R code used to produce all findings will be made available in the Dryad Digital Repository. Raw data from the Norwegian part of the Barents Sea, collected by the IMR, Norway, are available upon request. Raw data from the Russian part, sampled by the Polar Branch of Russian Federal Research Institute of Fisheries and Oceanography (PINRO), are not publicly available due to Russian Law, preventing publication of raw data collected on Russian territory. Access to Russian raw data is granted through contracted collaboration in joint projects with PINRO.

ORCID

Kari E. Ellingsen  <https://orcid.org/0000-0002-2321-8278>

REFERENCES

- Adler, P., Raff, D., & Lauenroth, W. (2001). The effect of grazing on the spatial heterogeneity of vegetation. *Oecologia*, 128, 465–479. <https://doi.org/10.1007/s004420100737>
- Anderson, M. J., Crist, T. O., Chase, J. M., Vellend, M., Inouye, B. D., Freestone, A. L., ... Swenson, N. G. (2011). Navigating the multiple meanings of β diversity: A roadmap for the practicing ecologist. *Ecology Letters*, 14(1), 19–28. <https://doi.org/10.1111/j.1461-0248.2010.01552.x>
- Anderson, M. J., Ellingsen, K. E., & McArdle, B. H. (2006). Multivariate dispersion as a measure of beta diversity. *Ecology Letters*, 9(6), 683–693. <https://doi.org/10.1111/j.1461-0248.2006.00926.x>
- Antiqueira, P. A. P., Petchey, O. L., dos Santos, V. P., de Oliveira, V. M., & Romero, G. Q. (2018). Environmental change and predator diversity drive alpha and beta diversity in freshwater macro and micro-organisms. *Global Change Biology*, 24(8), 3715–3728. <https://doi.org/10.1111/gcb.14314>
- Årthun, M., Eldevik, T., & Smedsrud, L. H. (2019). The role of Atlantic heat transport in future Arctic winter sea ice loss. *Journal of Climate*, 32(11), 3327–3341. <https://doi.org/10.1175/JCLI-D-18-0750.1>
- Baum, J. K., & Worm, B. (2009). Cascading top-down effects of changing oceanic predator abundances. *Journal of Animal Ecology*, 78(4), 699–714. <https://doi.org/10.1111/j.1365-2656.2009.01531.x>
- Blowes, S. A., Supp, S. R., Antão, L. H., Bates, A., Bruelheide, H., Chase, J. M., ... Dornelas, M. (2019). The geography of biodiversity change in marine and terrestrial assemblages. *Science*, 366(6463), 339–345. <https://doi.org/10.1126/science.aaw1620>
- Boitsov, V. D., Karsakov, A. L., & Trofimov, A. G. (2012). Atlantic water temperature and climate in the Barents Sea, 2000–2009. *ICES Journal of Marine Science*, 69(5), 833–840. <https://doi.org/10.1093/icesjms/fss075>
- Bråthen, K. A., Ims, R. A., Yoccoz, N. G., Fauchald, P., Tveraa, T., & Hausner, V. H. (2007). Induced shift in ecosystem productivity? Extensive scale effects of abundant large herbivores. *Ecosystems*, 10(5), 773–789. <https://doi.org/10.1007/s10021-007-9058-3>
- Butsic, V., Lewis, D. J., Radeloff, V. C., Baumann, M., & Kuemmerle, T. (2017). Quasi-experimental methods enable stronger inferences from observational data in ecology. *Basic and Applied Ecology*, 19, 1–10. <https://doi.org/10.1016/j.baae.2017.01.005>
- Cardinale, B. J., Gonzalez, A., Allington, G. R. H., & Loreau, M. (2018). Is local biodiversity declining or not? A summary of the debate over analysis of species richness time trends. *Biological Conservation*, 219, 175–183. <https://doi.org/10.1016/j.biocon.2017.12.021>
- Carpenter, S. R., & Kitchell, J. F. (Eds.). (1993). *The trophic cascade in lakes*. Cambridge, UK: Cambridge University Press.
- Certain, G., & Planque, B. (2015). Biodiversity baseline for large marine ecosystems: An example from the Barents Sea. *ICES Journal of Marine Science*, 72(6), 1756–1768. <https://doi.org/10.1093/icesjms/fsv040>
- Chao, A., Chazdon, R. L., Colwell, R. K., & Shen, T.-J. (2005). A new statistical approach for assessing similarity of species composition with incidence and abundance data. *Ecology Letters*, 8(2), 148–159. <https://doi.org/10.1111/j.1461-0248.2004.00707.x>
- Chase, J. M., Biro, E. G., Ryberg, W. A., & Smith, K. G. (2009). Predators temper the relative importance of stochastic processes in the assembly of prey metacommunities. *Ecology Letters*, 12(11), 1210–1218. <https://doi.org/10.1111/j.1461-0248.2009.01362.x>
- Chase, J. M., Kraft, N. J. B., Smith, K. G., Vellend, M., & Inouye, B. D. (2011). Using null models to disentangle variation in community dissimilarity from variation in α -diversity. *Ecosphere*, 2(2), 1–11. <https://doi.org/10.1890/ES10-00117.1>
- Chase, J. M., McGill, B. J., McGlenn, D. J., May, F., Blowes, S. A., Xiao, X., ... Gotelli, N. J. (2018). Embracing scale-dependence to achieve a deeper understanding of biodiversity and its change across communities. *Ecology Letters*, 21(11), 1737–1751. <https://doi.org/10.1111/ele.13151>

- Christiansen, J. S., & Reist, J. D. (2013). Chapter 6. Fishes. In H. Meltofte (Ed.), *Arctic biodiversity assessment. Status and trends in Arctic biodiversity* (pp. 193–245). Akureyri, Iceland: Conservation of Arctic Flora and Fauna.
- Cirtwill, A. R., & Stouffer, D. B. (2016). Knowledge of predator–prey interactions improves predictions of immigration and extinction in island biogeography. *Global Ecology and Biogeography*, 25(7), 900–911. <https://doi.org/10.1111/geb.12332>
- Crist, T. O., & Veech, J. A. (2006). Additive partitioning of rarefaction curves and species–area relationships: Unifying α -, β - and γ -diversity with sample size and habitat area. *Ecology Letters*, 9(8), 923–932. <https://doi.org/10.1111/j.1461-0248.2006.00941.x>
- de Gruijter, J. J., & ter Braak, C. J. F. (1990). Model-free estimation from spatial samples: A reappraisal of classical sampling theory. *Mathematical Geology*, 22(4), 407–415. <https://doi.org/10.1007/BF00890327>
- Ellingsen, K. E., Anderson, M. J., Shackell, N. L., Tveraa, T., Yoccoz, N. G., & Frank, K. T. (2015). The role of a dominant predator in shaping biodiversity over space and time in a marine ecosystem. *Journal of Animal Ecology*, 84(5), 1242–1252. <https://doi.org/10.1111/1365-2656.12396>
- Eriksen, E. (2014). *Survey report from the joint Norwegian/Russian ecosystem survey in the Barents Sea and adjacent waters. August–October 2014. IMR/PINRO Joint Report Series. No. 1/2015*. 153 pp. ISSN 1502–8828.
- Estes, J. A., & Palmisano, J. F. (1974). Sea otters: Their role in structuring nearshore communities. *Science*, 185(4156), 1058–1060. <https://doi.org/10.1126/science.185.4156.1058>
- Finderup Nielsen, T., Sand-Jensen, K., Dornelas, M., & Bruun, H. H. (2019). More is less: Net gain in species richness, but biotic homogenization over 140 years. *Ecology Letters*, 22(10), 1650–1657. <https://doi.org/10.1111/ele.13361>
- Fossheim, M., Primicerio, R., Johannesen, E., Ingvaldsen, R. B., Aschan, M. M., & Dolgov, A. V. (2015). Recent warming leads to a rapid borealization of fish communities in the Arctic. *Nature Climate Change*, 5, 673–677. <https://doi.org/10.1038/nclimate2647>
- Frank, K. T., Fisher, J. A. D., & Leggett, W. C. (2015). The spatio-temporal dynamics of trophic control in large marine ecosystems. In T. C. Hanley & K. J. La Pierre (Eds.), *Trophic ecology: Bottom-up and top-down interactions across aquatic and terrestrial systems* (pp. 31–53). Cambridge, UK: Cambridge University Press.
- Frank, K. T., Petrie, B., Choi, J. S., & Leggett, W. C. (2005). Trophic cascades in a formerly cod-dominated ecosystem. *Science*, 308(5728), 1621–1623. <https://doi.org/10.1126/science.1113075>
- Frank, K. T., Petrie, B., Fisher, J. A. D., & Leggett, W. C. (2011). Transient dynamics of an altered large marine ecosystem. *Nature*, 477, 86–89. <https://doi.org/10.1038/nature10285>
- Gelman, A. (2018). *You need 16 times the sample size to estimate an interaction than to estimate a main effect*. Retrieved from <https://statmodeling.stat.columbia.edu/2018/03/15/need-16-times-sample-size-estimate-interaction-estimate-main-effect/>
- Gelman, A., & Hill, J. (2007). *Data analysis using regression and multilevel/hierarchical models*. Cambridge, UK: Cambridge University Press.
- Goodrich, B., Gabry, J., Ali, I., & Brilleman, S. (2019). rstanarm: Bayesian applied regression modeling via Stan. R package version 2.19.2. Retrieved from <https://mc-stan.org/rstanarm>
- Hillebrand, H., Blasius, B., Borer, E. T., Chase, J. M., Downing, J. A., Eriksson, B. K., ... Ryabov, A. B. (2018). Biodiversity change is uncoupled from species richness trends: Consequences for conservation and monitoring. *Journal of Applied Ecology*, 55(1), 169–184. <https://doi.org/10.1111/1365-2664.12959>
- Holt, R. E., Bogstad, B., Durant, J. M., Dolgov, A. V., & Ottersen, G. (2019). Barents Sea cod (*Gadus morhua*) diet composition: Long-term interannual, seasonal, and ontogenetic patterns. *ICES Journal of Marine Science*, 76(6), 1641–1652. <https://doi.org/10.1093/icesjms/fsz082>
- Iacarella, J. C., Adamczyk, E., Bowen, D., Chalifour, L., Eger, A., Heath, W., ... Baum, J. K. (2018). Anthropogenic disturbance homogenizes seagrass fish communities. *Global Change Biology*, 24(5), 1904–1918. <https://doi.org/10.1111/gcb.14090>
- ICES. (2018). *Report of the Arctic Fisheries Working Group (AFWG). 18–24 April 2018. Ispra, Italy. ICES CM 2018/ACOM:06*. 859 pp.
- Ingvaldsen, R. B., Bogstad, B., Dolgov, A. V., Ellingsen, K. E., Gjøsaeter, H., Gradinger, R., ... Yoccoz, N. G. (2015). Sources of uncertainties in cod distribution models. *Nature Climate Change*, 5, 788–789. <https://doi.org/10.1038/nclimate2761>
- Ingvaldsen, R. B., & Gjøsaeter, H. (2013). Responses in spatial distribution of Barents Sea capelin to changes in stock size, ocean temperature and ice cover. *Marine Biology Research*, 9(9), 867–877. <https://doi.org/10.1080/17451000.2013.775450>
- Johannesen, E., Høines, Å. S., Dolgov, A. V., & Fossheim, M. (2012). Demersal fish assemblages and spatial diversity patterns in the Arctic-Atlantic transition zone in the Barents Sea. *PLoS ONE*, 7(4), e34924. <https://doi.org/10.1371/journal.pone.0034924>
- Johannesen, E., Johnsen, E., Johansen, G. O., & Korsbrekke, K. (2019). *StoX applied to cod and haddock data from the Barents Sea NOR-RUS ecosystem cruise in autumn. Swept area abundance, length and weight at age 2004–2017*. Fiske og Havet 2019–6. Retrieved from <https://www.hi.no/en/hi/nettrapporter/fisken-og-havet-en-2019-6>
- Kjesbu, O. S., Bogstad, B., Devine, J. A., Gjøsaeter, H., Howell, D., Ingvaldsen, R. B., ... Skjæraasen, J. E. (2014). Synergies between climate and management for Atlantic cod fisheries at high latitudes. *Proceedings of the National Academy of Sciences of the United States of America*, 111(9), 3478–3483. <https://doi.org/10.1073/pnas.1316342111>
- Lind, S., Ingvaldsen, R. B., & Furevik, T. (2018). Arctic warming hotspot in the northern Barents Sea linked to declining sea-ice import. *Nature Climate Change*, 8(7), 634–639. <https://doi.org/10.1038/s41558-018-0205-y>
- Magurran, A. E., Dornelas, M., Moyes, F., Gotelli, N. J., & McGill, B. (2015). Rapid biotic homogenization of marine fish assemblages. *Nature Communications*, 6, 8405. <https://doi.org/10.1038/ncomms9405>
- McGill, B. J., Dornelas, M., Gotelli, N. J., & Magurran, A. E. (2015). Fifteen forms of biodiversity trend in the Anthropocene. *Trends in Ecology & Evolution*, 30(2), 104–113. <https://doi.org/10.1016/j.tree.2014.11.006>
- McShane, B. B., Gal, D., Gelman, A., Robert, C., & Tackett, J. L. (2019). Abandon statistical significance. *The American Statistician*, 73(sup1), 235–245. <https://doi.org/10.1080/00031305.2018.1527253>
- Mecklenburg, C. W., Lynghammer, A., Johannesen, E., Byrkjedal, I., Christiansen, J. S., Dolgov, A. V., ... Wienerroither, R. M. (2018). *Marine fishes of the Arctic region*. Akureyri, Iceland: Conservation of Arctic Flora and Fauna. ISBN 978-9935-431-70-7.
- Michalsen, K., Dalpadado, P., Eriksen, E., Gjøsaeter, H., Ingvaldsen, R. B., Johannesen, E., ... Skern-Mauritzen, M. (2013). Marine living resources of the Barents Sea – Ecosystem understanding and monitoring in a climate change perspective. *Marine Biology Research*, 9(9), 932–947. <https://doi.org/10.1080/17451000.2013.775459>
- Mysterud, A., Yoccoz, N. G., Langvatn, R., Pettorelli, N., & Stenseth, N. C. (2008). Hierarchical path analysis of deer responses to direct and indirect effects of climate in northern forest. *Philosophical Transactions of the Royal Society of London, Series B: Biological Sciences*, 363(1501), 2359–2368. <https://doi.org/10.1098/rstb.2007.2206>
- Nakagawa, S., & Schielzeth, H. (2013). A general and simple method for obtaining R^2 from generalized linear mixed-effects models. *Methods in Ecology and Evolution*, 4(2), 133–142. <https://doi.org/10.1111/j.2041-210x.2012.00261.x>
- Ohlmann, M., Mazel, F., Chalmandrier, L., Bec, S., Coissac, E., Gielly, L., ... Thuiller, W. (2018). Mapping the imprint of biotic interactions on β -diversity. *Ecology Letters*, 21(11), 1660–1669. <https://doi.org/10.1111/ele.13143>
- Paine, R. T. (1980). Food webs: Linkage, interaction strength and community infrastructure. *Journal of Animal Ecology*, 49(3), 667–685. <https://doi.org/10.2307/4220>

- Pawley, M. D. M., & McArdle, B. H. (2018). Spatial autocorrelation: Bane or bonus? *bioRxiv*. <https://doi.org/10.1101/385526>
- Qian, H., & Ricklefs, R. E. (2007). A latitudinal gradient in large-scale beta diversity for vascular plants in North America. *Ecology Letters*, 10(8), 737–744. <https://doi.org/10.1111/j.1461-0248.2007.01066.x>
- R Core Team. (2018). *R: A language and environment for statistical computing*. Version 3.5.1. Vienna, Austria: R Foundation for Statistical Computing.
- Raup, D. M., & Crick, R. E. (1979). Measurement of faunal similarity in paleontology. *Journal of Paleontology*, 53(5), 1213–1227.
- Reeves, G. K., Cox, D. R., Darby, S. C., & Whitley, E. (1998). Some aspects of measurement error in explanatory variables for continuous and binary regression models. *Statistics in Medicine*, 17, 2157–2177. [https://doi.org/10.1002/\(SICI\)1097-0258\(19981015\)17:19<2157:AID-SIM916>3.0.CO;2-F](https://doi.org/10.1002/(SICI)1097-0258(19981015)17:19<2157:AID-SIM916>3.0.CO;2-F)
- Ricklefs, R. E. (1987). Community diversity: Relative roles of local and regional processes. *Science*, 235(4785), 167–171. <https://doi.org/10.1126/science.235.4785.167>
- Rutterford, L. A., Simpson, S. D., Jennings, S., Johnson, M. P., Blanchard, J. L., Schön, P.-J., ... Genner, M. J. (2015). Future fish distributions constrained by depth in warming seas. *Nature Climate Change*, 5(6), 569–573. <https://doi.org/10.1038/nclimate2607>
- Ryberg, W. A., Smith, K. G., & Chase, J. M. (2012). Predators alter the scaling of diversity in prey metacommunities. *Oikos*, 121(12), 1995–2000. <https://doi.org/10.1111/j.1600-0706.2012.19620.x>
- Scheffer, M., Carpenter, S., & de Young, B. (2005). Cascading effects of overfishing marine systems. *Trends in Ecology & Evolution*, 20(11), 579–581. <https://doi.org/10.1016/j.tree.2005.08.018>
- Shackell, N. L., Fisher, J. A. D., Frank, K. T., & Lawton, P. (2012). Spatial scale of similarity as an indicator of metacommunity stability in exploited marine systems. *Ecological Applications*, 22(1), 336–348. <https://doi.org/10.1890/10-2093.1>
- Shadish, W. R., Cook, T. D., & Campbell, D. T. (2002). *Experimental and quasi-experimental designs for generalized causal inference*. Boston, MA: Houghton Mifflin Company.
- Socolar, J. B., Gilroy, J. J., Kunin, W. E., & Edwards, D. P. (2016). How should beta-diversity inform biodiversity conservation? *Trends in Ecology & Evolution*, 31(1), 67–80. <https://doi.org/10.1016/j.tree.2015.11.005>
- Stige, L. C., Dalpadado, P., Orlova, E., Boulay, A.-C., Durant, J. M., Ottersen, G., & Stenseth, N. C. (2014). Spatiotemporal statistical analyses reveal predator-driven zooplankton fluctuations in the Barents Sea. *Progress in Oceanography*, 120, 243–253. <https://doi.org/10.1016/j.pocean.2013.09.006>
- Stotz, G. C., Gianoli, E., & Cahill Jr., J. F. (2019). Biotic homogenization within and across eight widely distributed grasslands following invasion by *Bromus inermis*. *Ecology*, 100(7), e02717. <https://doi.org/10.1002/ecy.2717>
- Terborgh, J. W. (2015). Toward a trophic theory of species diversity. *Proceedings of the National Academy of Sciences of the United States of America*, 112(37), 11415–11422. <https://doi.org/10.1073/pnas.1501070112>
- Thuiller, W., Lavorel, S., Araújo, M. B., Sykes, M. T., & Prentice, I. C. (2005). Climate change threats to plant diversity in Europe. *Proceedings of the National Academy of Sciences of the United States of America*, 102(23), 8245–8250. <https://doi.org/10.1073/pnas.0409902102>
- Trofimov, A., & Ingvaldsen, R. (2018). Barents Sea. In C. González-Pola, K. M. H. Larsen, P. Fratantoni, & A. Beszczynska-Möller (Eds.), *ICES report on ocean climate 2017*. ICES cooperative research report no. 345 (pp. 89–90). Retrieved from <https://doi.org/10.17895/ices.pub.4625>
- Turner, M. G., Calder, W. J., Cumming, G. S., Hughes, T. P., Jentsch, A., LaDeau, S. L., ... Carpenter, S. R. (2020). Climate change, ecosystems and abrupt change: Science priorities. *Philosophical Transactions of the Royal Society B: Biological Sciences*, 375(1794), 20190105. <https://doi.org/10.1098/rstb.2019.0105>
- Ulrich, W., Zalewski, M., & Uvarov, A. V. (2012). Spatial distribution and species co-occurrence in soil invertebrate and plant communities on northern taiga islands. *Annales Zoologici Fennici*, 49(3), 161–173. <https://doi.org/10.5735/086.049.0304>
- Vehtari, A., Gelman, A., & Gabry, J. (2017). Practical Bayesian model evaluation using leave-one-out cross-validation and WAIC. *Statistics and Computing*, 27(5), 1413–1432. <https://doi.org/10.1007/s1122-016-9696-4>
- Vellend, M., Baeten, L., Myers-Smith, I. H., Elmendorf, S. C., Beausejour, R., Brown, C. D., ... Wipf, S. (2013). Global meta-analysis reveals no net change in local-scale plant biodiversity over time. *Proceedings of the National Academy of Sciences of the United States of America*, 110(48), 19456–19459. <https://doi.org/10.1073/pnas.1312779110>
- Verity, P. G., & Smetacek, V. (1996). Organism life cycles, predation, and the structure of marine pelagic ecosystems. *Marine Ecology Progress Series*, 130, 277–293. <https://doi.org/10.3354/meps130277>
- Watanabe, S. (2013). A widely applicable Bayesian information criterion. *Journal of Machine Learning Research*, 14, 867–897.
- Wienerroither, R., Johannesen, E., Langøy, H., Eriksen, K. B., Wenneck, T. L., Høines, Å. S., ... Langhelle, G. (2011). *Atlas of the Barents Sea fishes*. IMR/PINRO joint report series, 1-2011. Bergen, Norway and Murmansk, Russia: Institute of Marine Research (IMR) and Polar Research Institute of Fisheries and Oceanography (PINRO).
- Wood, S. N. (2006). *Generalized additive models. An introduction with R*. New York, NY: Chapman & Hall/CRC.
- Xing, D., & He, F. (2019). Environmental filtering explains a U-shape latitudinal pattern in regional β -diversity for eastern North American trees. *Ecology Letters*, 22(2), 284–291. <https://doi.org/10.1111/ele.13188>

SUPPORTING INFORMATION

Additional supporting information may be found online in the Supporting Information section.

How to cite this article: Ellingsen KE, Yoccoz NG, Tveraa T, et al. The rise of a marine generalist predator and the fall of beta diversity. *Glob Change Biol*. 2020;26:2897–2907. <https://doi.org/10.1111/gcb.15027>