

Egg distribution, bottom topography and small-scale cod population structure in a coastal marine system

Halvor Knutsen^{1,2,*}, Esben Moland Olsen^{1,2}, Lorenzo Ciannelli^{2,4}, Sigurd Heiberg Espeland²,
Jan Atle Knutsen¹, Jan Henrik Simonsen¹, Stig Skreslet³, Nils Chr. Stenseth^{1,2}

¹Institute of Marine Research, Flødevigen, 4817 His, Norway

²Centre for Ecological and Evolutionary Synthesis (CEES), University of Oslo, PO Box 1066, Blindern, 0316 Oslo, Norway

³Bodø University College, Department of Fisheries and Natural Sciences, 8049 Bodø, Norway

⁴Present address: College of Oceanic and Atmospheric Sciences, Oregon State University, Corvallis, Oregon 97331, USA

*Email: halvor.knutsen@imr.no

Marine Ecology Progress Series 333:249–255 (2007)

Appendix 1. Fjord system with individual sampling stations. See Fig. 1 (in main text) for location in Norway

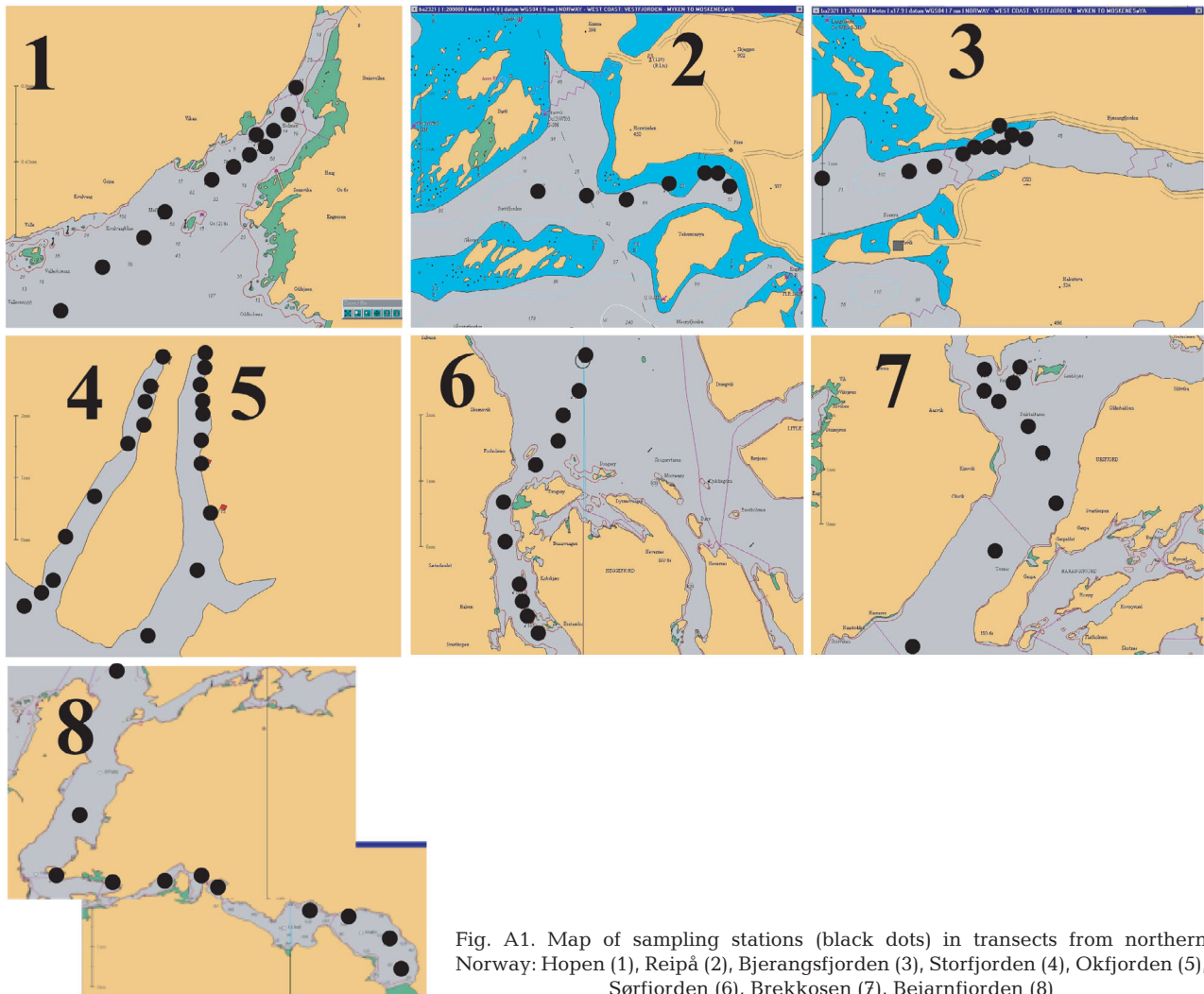


Fig. A1. Map of sampling stations (black dots) in transects from northern Norway: Hopen (1), Reipå (2), Bjerangsfjorden (3), Storfjorden (4), Okfjorden (5), Sørffjorden (6), Brekkosen (7), Beiarnfjorden (8)

Appendix 1 (continued)

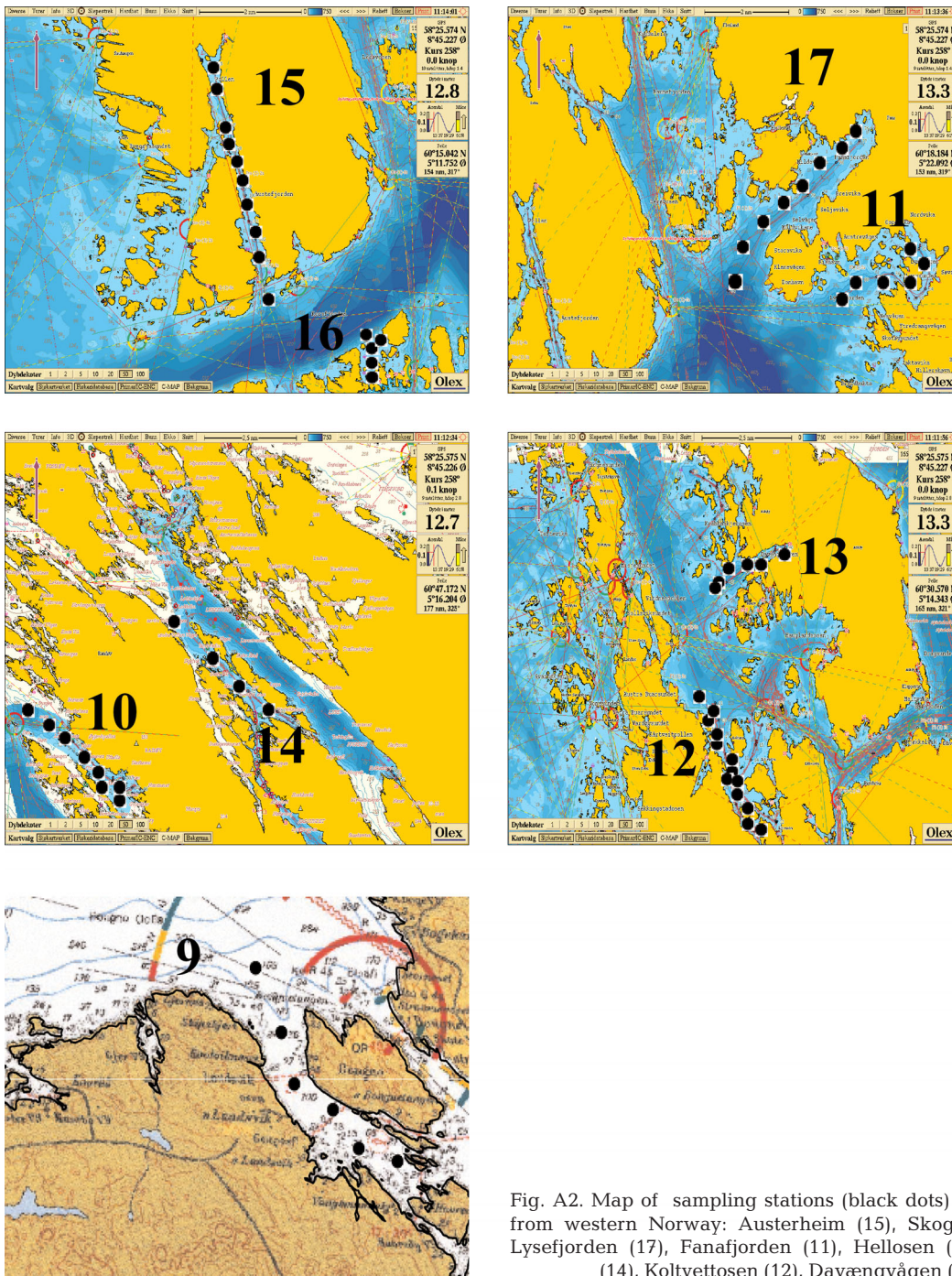


Fig. A2. Map of sampling stations (black dots) in transects from western Norway: Austerheim (15), Skogsvågen (16), Lysefjorden (17), Fanafjorden (11), Hellosen (10), Lurosen (14), Koltvettosen (12), Davøngvågen (13)

Appendix 1 (continued)

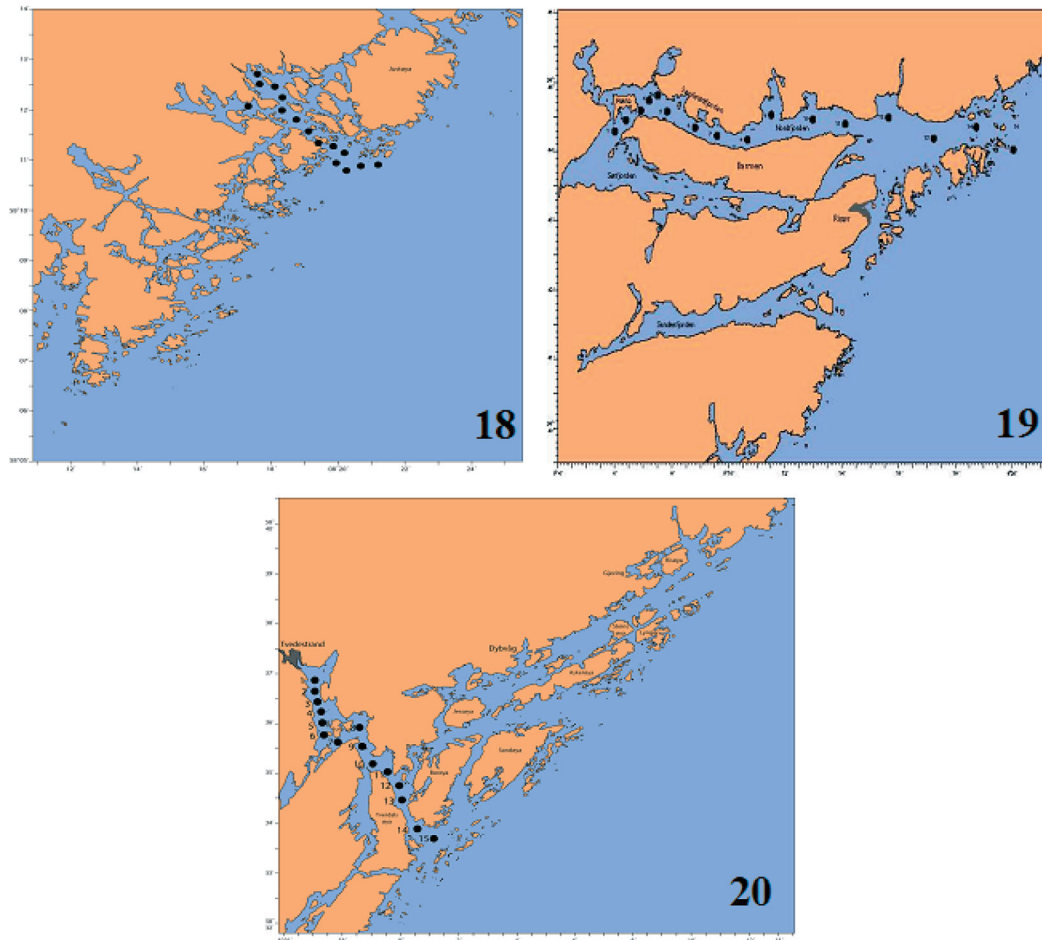


Fig. A3. Map of sampling stations (black dots) in transects from southern Norway: Lillesand (18), Risør (19) and Tvedestrand (20) (all 2005)

Appendix 2. Threshold selection for the regression models used in the *Gadus morhua* egg distribution analysis

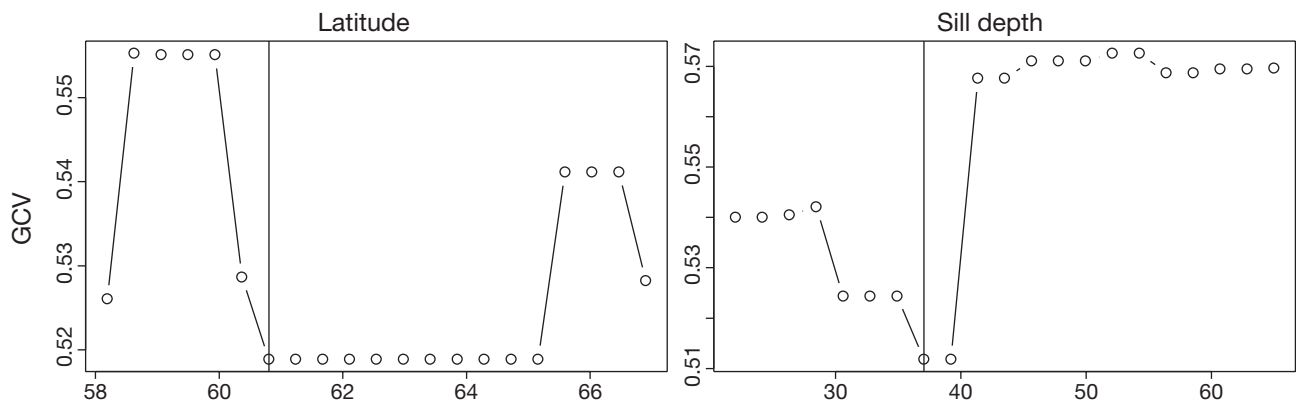


Fig. A4. Generalized Cross Validation (GCV) profile for the selection of the threshold values in Models 2 and 3 from Table 1 (in main text). (a) Latitude threshold; (b) sill depth threshold