

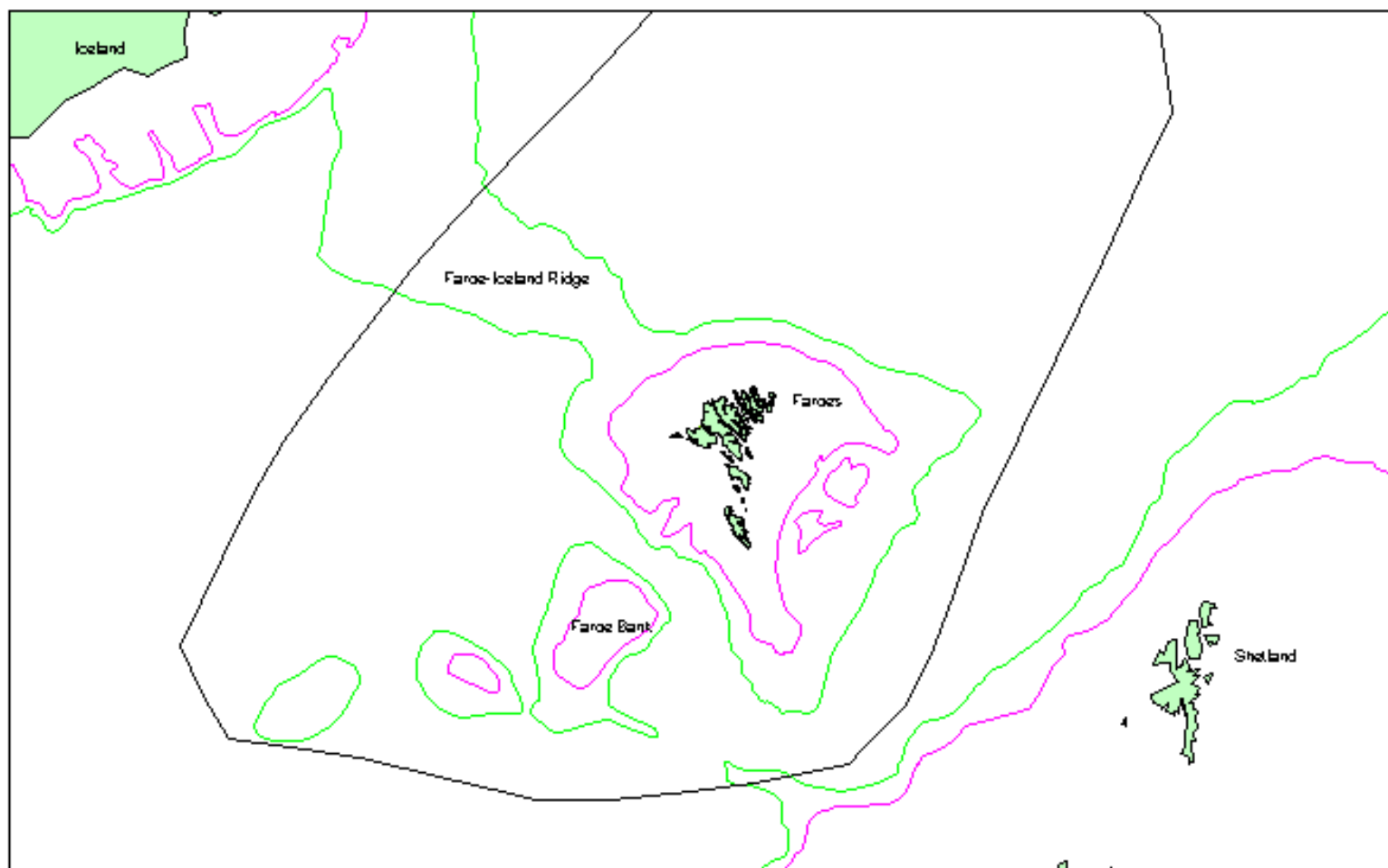
Cod in Faroese waters

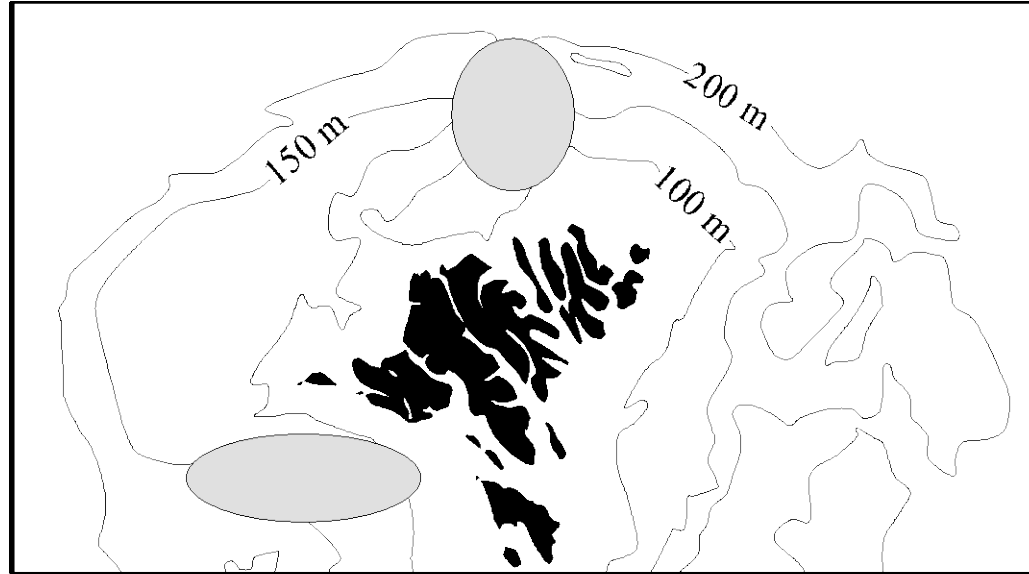
Stein Hjalti í Jákupsstovu

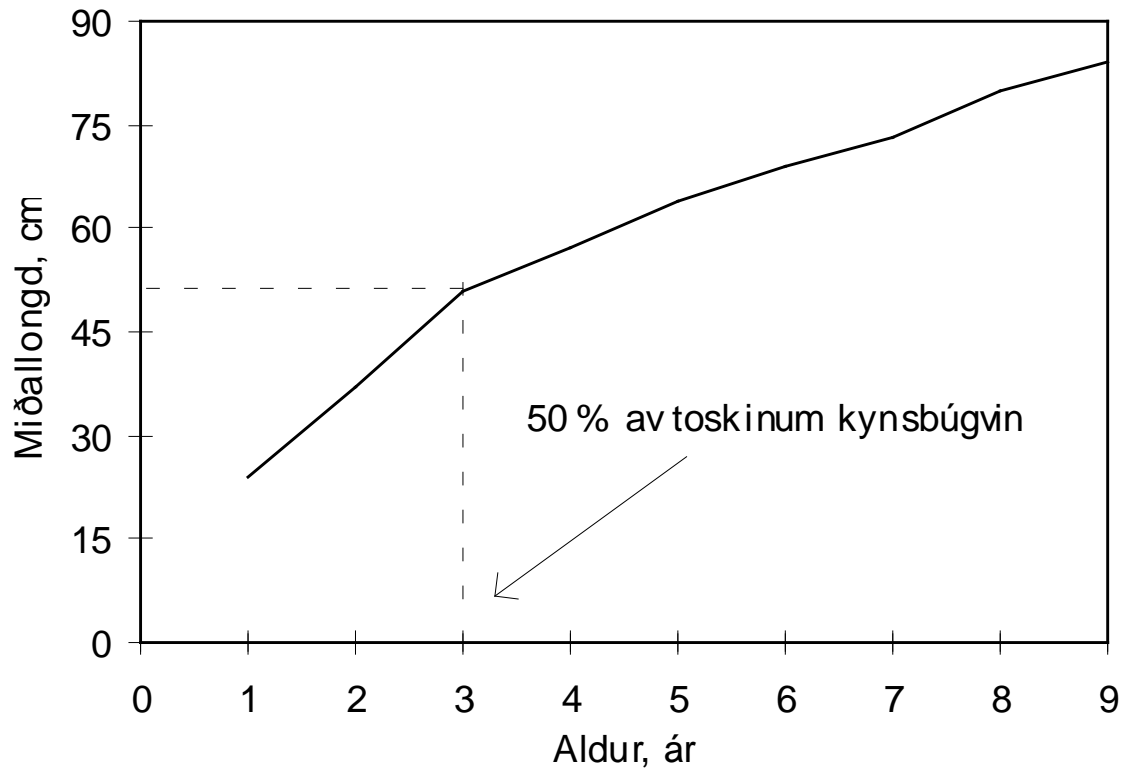
Jákup Reinert

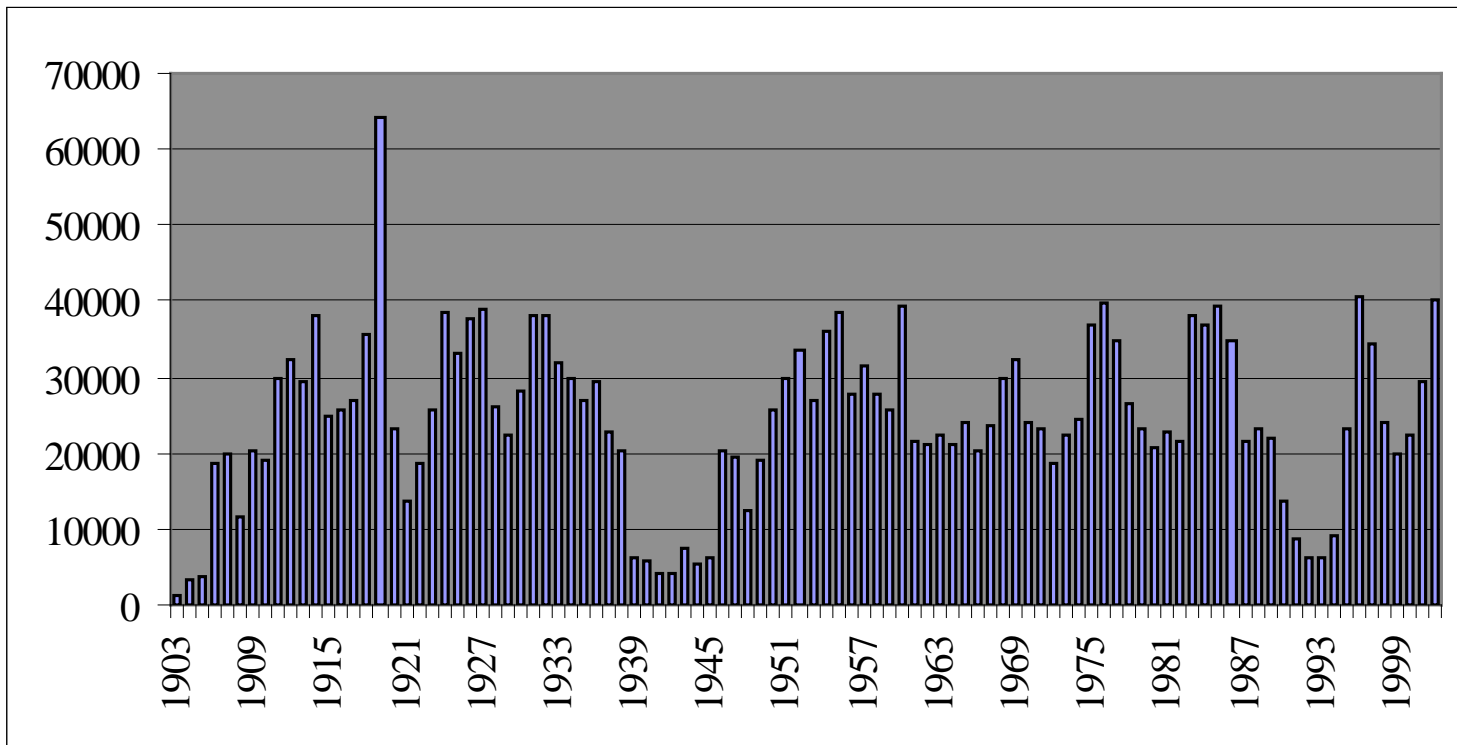
Petur Steingrund

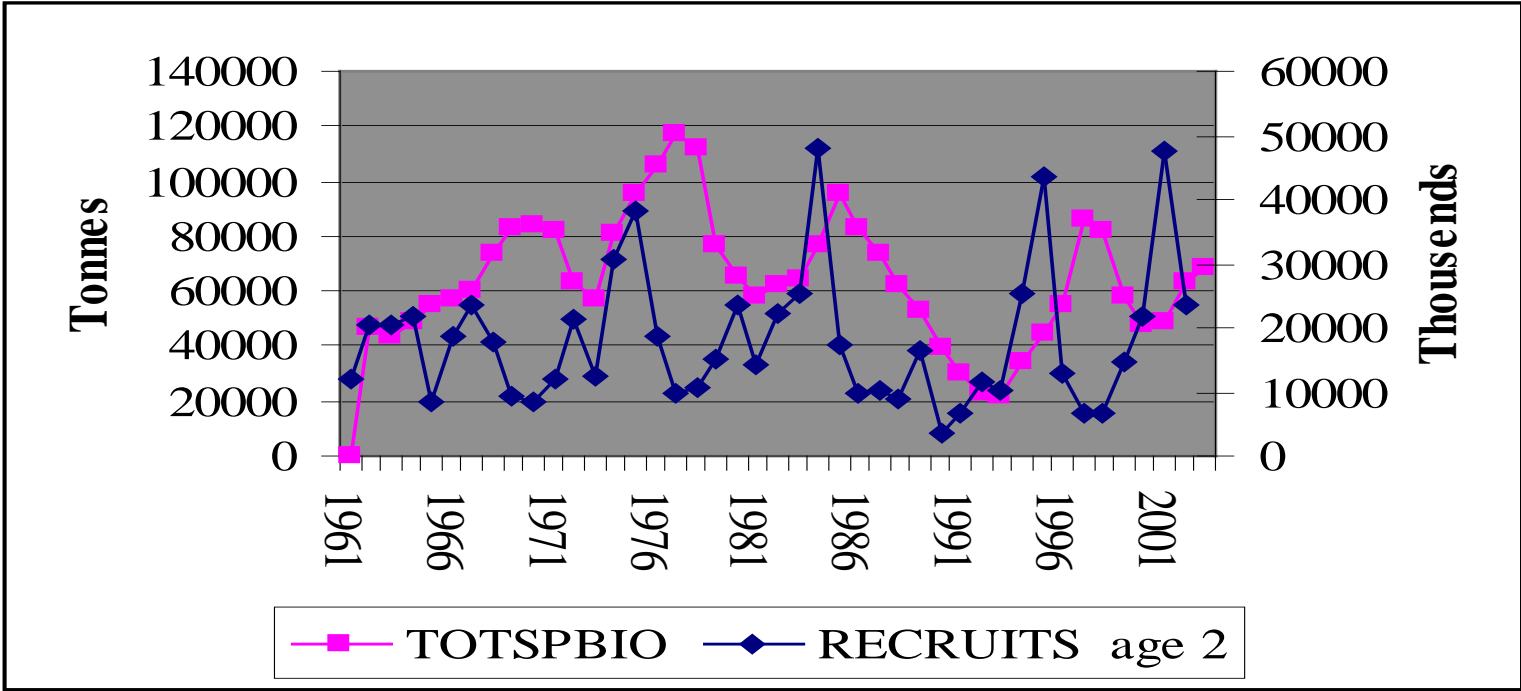
(Faroese Fisheries Laboratory)



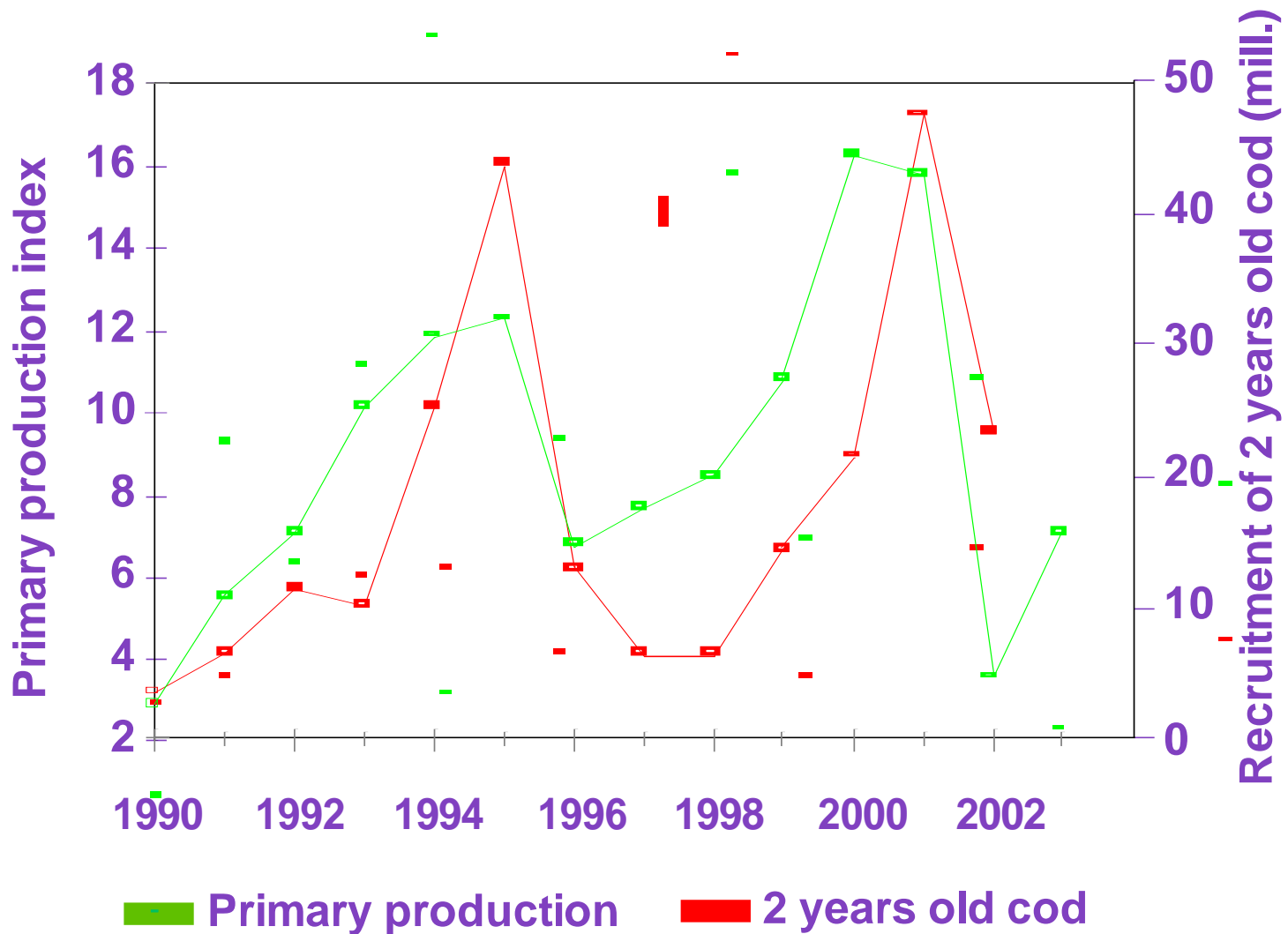




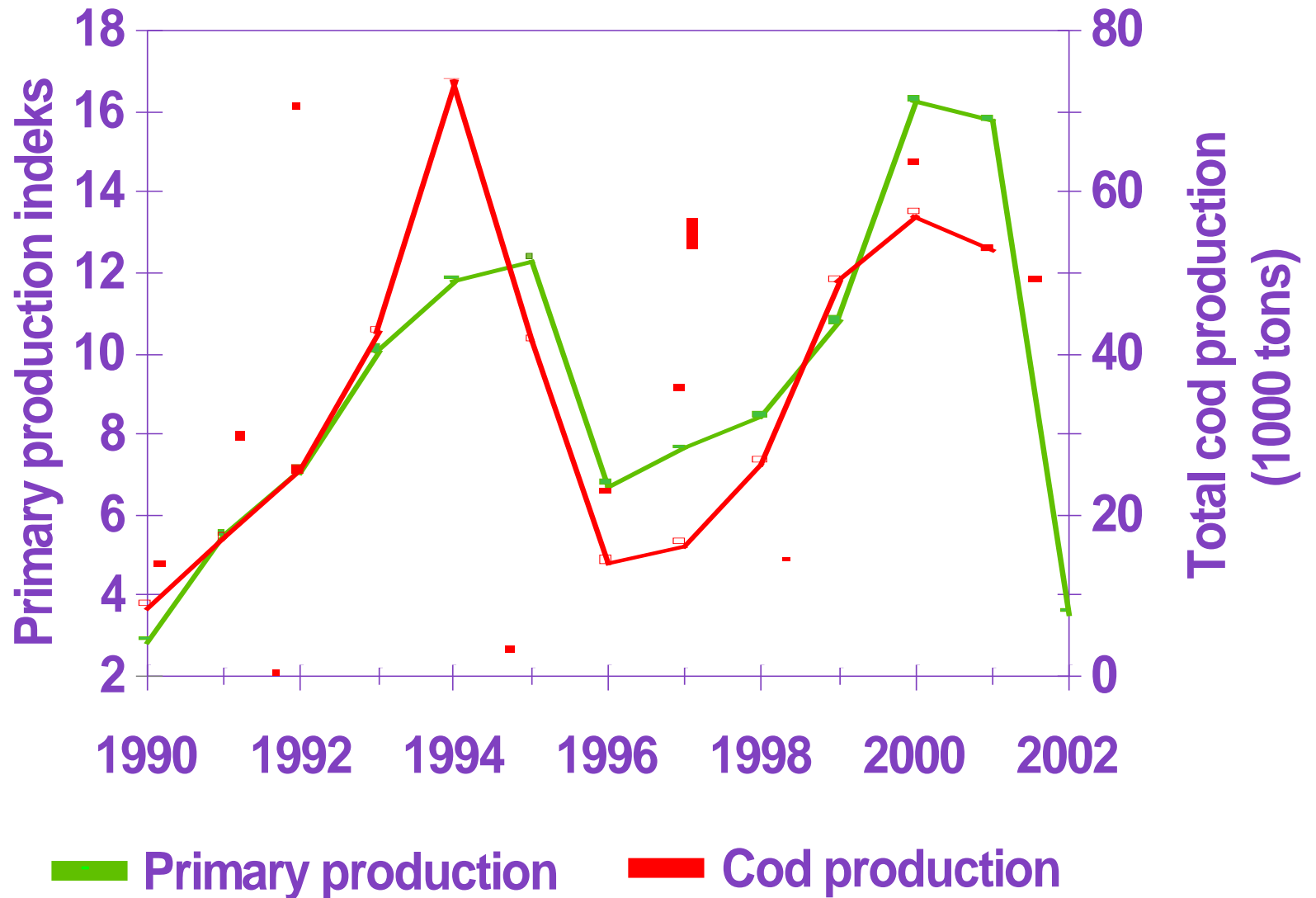




Primary production and cod recruitment



Primary production and cod production



The larger stern trawlers



- Not in the effort regulation.
- 13
- Engine >1000 Hp
- redfish, blue ling, saithe, cod on the Faroe Iceland ridge,
- Quota cod and haddock

The pair trawlers



- 31 licenses
- Engines >400 hp
- Regulated by the effort quota system
- Saithe target species, by catches of cod and haddock.

Longliners



- 19 >110 GRT
- Regulated by the effort quota system
- Operate all over the shelf and on the Faroe Bank targeting cod and haddock and off the shelf for tusk and ling.

Coastal longliners and jiggers



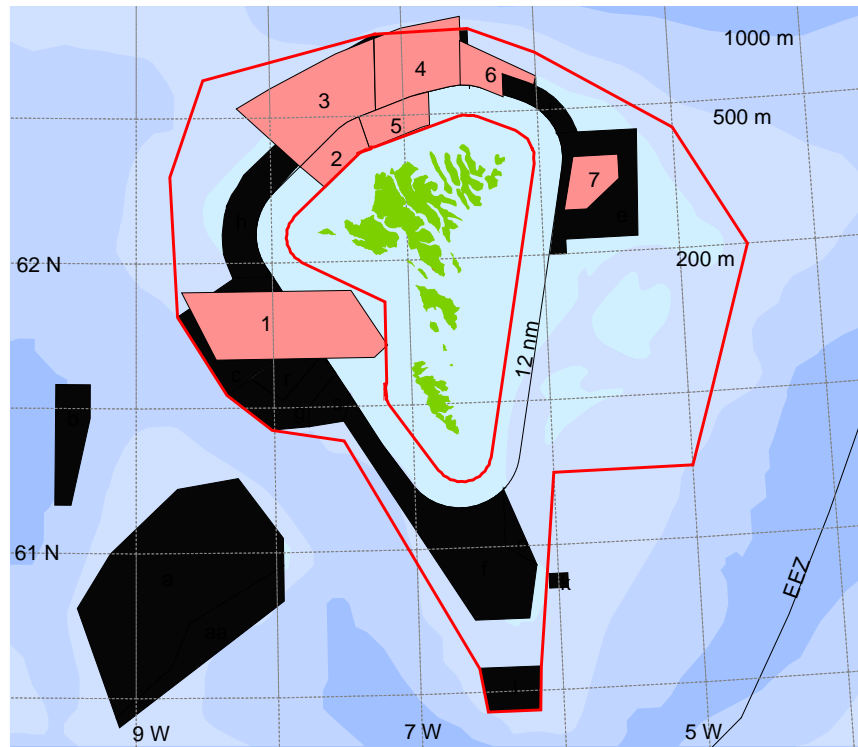
- 15 - 110 GRT
- 72
- are regulated by the effort quota system
- Operate mainly on the shelf and on the Faroe Bank targeting cod and haddock.

Small coastal boats



- < 15 GRT.
- Full time vessels 179 individual effort quotas.
- Part time 1040 combined effort quota.
- mainly for cod and haddock on the shelf,
- variety of different types of boats

The closed areas



Closure timing

Closed areas to trawlings

Areas inside the 12 nm zone closed year round

Area	Period
a	1 jan- 31 des
aa	1 jun – 31 aug
b	20 jan- 1 mar
c	1 jan- 31 des
d	1 jan- 31 des
e	1 apr- 31 jan
f	1 jan- 31 des
g	1 jan- 31 des
h	1 jan- 31 des
i	1 jan- 31 des
j	1 jan- 31 des
k	1 jan- 31 des
l	1 jan- 31 des
m	1 feb- 1 jun
n	31 jan- 1 apr
o	1 jan- 31 des
p	1 jan- 31 des
r	1 jan- 31 des
s	1 jan- 31 des

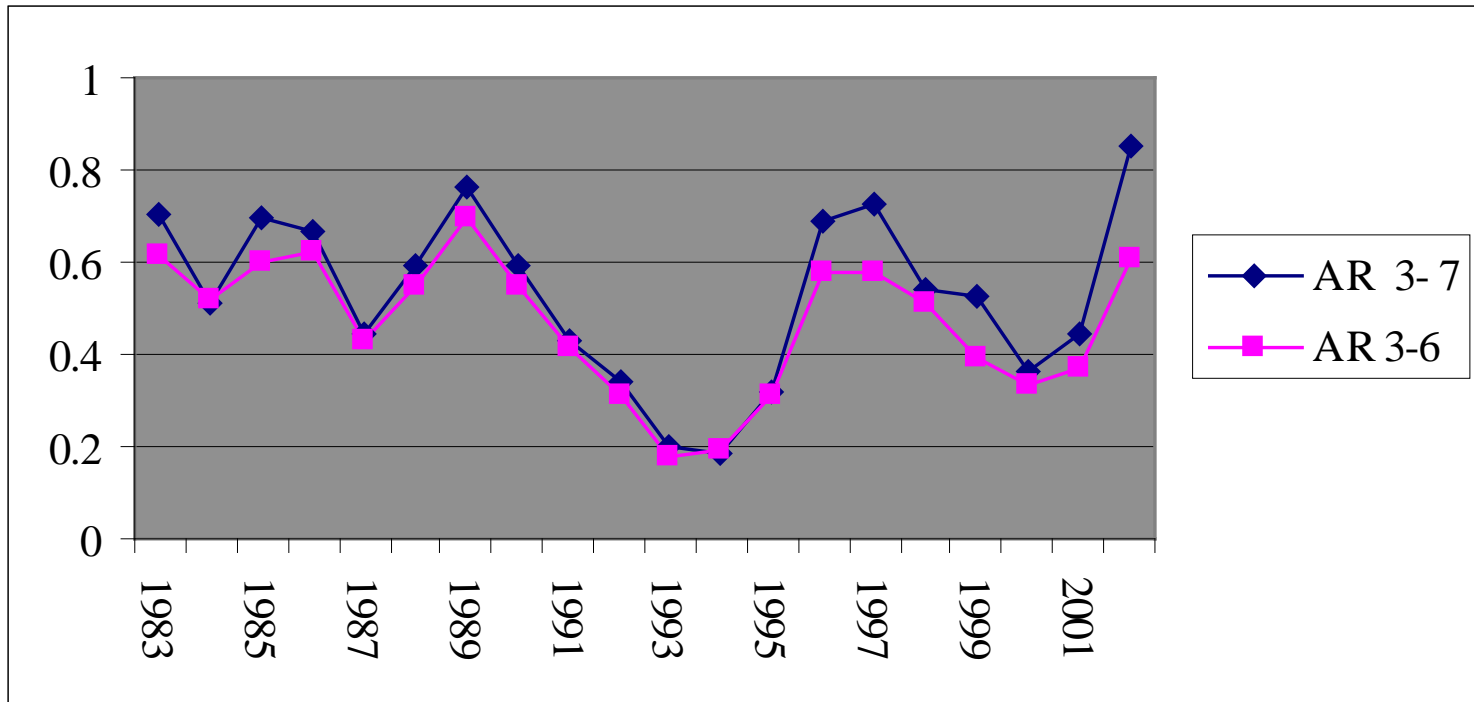
Spawning area closures

Area	Period
1	15 feb-31 mar
2	15 feb- 15 apr
3	1 feb- 1 apr
4	15 jan- 15 mai
5	15 feb- 15 apr
6	15 feb- 15 apr
7	15 jan- 1 apr

Aimed distribution of catches

Fleet category	Cod	Haddock	Saithe	Redfish
Long-liners < 110 GRT, jiggers, single trawl < 400 HP	51	58	17,5	1
Long-liners > 110 GRT	23	28	0	0
Pair-trawlers	21	10.25	69	8.5
Single trawlers > 400 HP	4	1.75	13	90.5
Others	1	2	0.5	0.5

F on cod



	1983-1990	1995-2002
F3-7	0.62	0.56
F3-6	0.57	0.46

Reference points

B_{lim} is 21 000 t, the lowest observed biomass	B_{pa} be set at 40 000 t
F_{lim} is 0.68	F_{pa} be set at 0.35

No's of days used

Table 4. Number of fishing days used by various fleet groups in Vb1			
	Long-liners 0-110 GRT, jiggers, trawlers <400hp	Long-liners <110 GRT	Pair-trawlers >400 HP
Average 85-95	22333	3023	10778
1998	23971	2519	6209
1999	21040	2428	7135
2000	24820	2414	7167
2001	29560	2512	6771
2002	30333	2680	6749
Average 98-01	25945	2511	6806

F on saithe, haddock and cod

