

International Council for
the Exploration of the Sea

C.M. 1990/G:3
Demersal Fish Cttee/ Session 0

VARIABILITIES IN STOMACH CONTENTS OF COD, COLLECTED BY
DEMERSAL AND PELAGIC TRAWL IN THE SOUTHERN PART OF
THE BARENTS SEA

by

Adnan M. Ajiad
Institute of Marine Research
P.o. box 1870 Nordnes, N-5024
Bergen, Norway

ABSTRACT

Samples of Northeast Arctic cod stomachs were collected separately on demersal and pelagic stations at the same date in February 1986 and were analysed for length group 30-40cm. The results indicate that the mean value of the stomach contents weight as well as the food composition are substantially different for the two type of gear. The Spearman rank correlation coefficient ($r_s = 0.109$; $t = 0.363$; $P > 0.1$) is not significant based on frequency data calculated from the diet of cod gathered by demersal and pelagic stations. These results question the accuracy of the consumption estimates which is based on a combination of field stomach contents weight and laboratory gastric evacuation rate studies. Therefore the mean value of the stomach contents weight should be distributed on the fishing gears, in addition to seasons, subareas, fish size and time of the day.

3112 / 6 3116

INTRODUCTION

Northeast Arctic cod has had a large predation impact on a different prey population in the Barents Sea (Ponomarenko and Yaragina, 1978 ; Mehl, 1989), and recent evidence points to predation as the predominant factor in relation to recruitment (Daan, 1987). The estimation of the consumption of different prey by cod in MULTSPEC "Multispecies model for the Barents Sea" is based on field data on stomach contents. However, the food consumption is very sensitive to an accurate estimate of the mean value of the stomach contents weight, and if that mean is overestimated, food consumption will be overestimated or vice versa. During 1986 a total of 1114 cod stomachs have been collected during the first quarter, 725 stomach have been gathered by demersal and 389 stomachs by pelagic trawl. The aim of the current paper is to study the feeding habits of cod in the Southern part of the Barents Sea based on cod stomachs collected from different habitats, mainly demersal and pelagic. Information on that kind is, however, limited from the Barents Sea.

MATERIALS AND METHODS

Only one length group (30-40cm) was analyzed from stomach data of Northeast Arctic cod collected by demersal and pelagic trawl from winter surveys (february 1986) in the Southern part of the Barents Sea (Table 1). Details of the sampling procedure and methods of stomach contents analysis are given in Mehl (1986). Spearman rank correlation coefficients have been applied to frequency data calculated from the diet of cod gathered by demersal and pelagic stations. Food items were then ranked serially according to their % frequencies, in descending order. That is, the highest percentage value was assigned rank number n , a number equal to the total number of food items being compared (Fritz, 1974).

RESULTS AND DISCUSSION

The stomach contents weight showed a large variation between samples collected by demersal and pelagic stations. The distribution of the individual stomach contents weight (Fig. 1) is skewed to the right in both samples (g1 demersal = 1.06 ;g1 pelagic = 1.11). The median weight of the stomach was much lower than the mean in both cases (demersal: mean=3.22, median = 2.05; pelagic: mean=13.74,median=8.13). These results indicate that the stomach contents weight are not normally distributed. The same phenomena have been reported in several studies for different species (Clarke, 1978;Cochran and Adelman, 1981; Durbin et al., 1983). The elongated body with a big mouth opening which is typical for piscivorous predators, enable cod to swallow a very large prey item. This may contribute, with other factors, to the skewed distribution of the stomach contents weight.

The proportions (weight %) of the major taxa in the diet of cod were markedly different among the two types of stations (table 2). Northeast Arctic cod, collected at pelagic stations consumed mainly fish preys (95.77 % of the stomach weight) namely; Clupea harengus, Mallotus villosus and Sebastes sp. In contrast, cod collected at demersal stations consumed two major preys; crustaceans (17.9 %) and fish preys (80.37 % of the stomach weight). The relatively greater importance of Clupea and Mallotus in a pelagic collection and crus-

The general picture arising from this analysis supports the idea that the sampling effort for the estimation of the mean value of the stomach contents weight should be distributed on station type, in addition to seasons, subareas, fish size and time of the day.

Cod stock's consumption was estimated by Mehl (1989). There is a short comments on this approach. Firstly, the mean value of the stomach content which was applied in that model, was from the "whole" sample mean (i.e demersal + pelagic). Secondly, this mean value have been multiplied by prey species proportion of the weight of the stomach contents, calculated from the total sample. The mean value of the stomach content and the proportion of prey species in demersal and pelagic diets, according to our finding in this paper, are significantly different . Therefore his combination of the stomach data and insufficient information about the proportion of cod in each age group which is distributed pelagically or demersally, constitute a source of uncertainty in the cod stock's consumption. The accurate estimation of the food consumption is critically dependent upon application of an appropriate model (Sainsbury, 1986). However, the accuracy is also affected by the sampling variability as in the case dealing with pelagic and demersal diets.

In summary, this paper advocates the need to examine thoroughly the reliability of the consumption estimates based on those models which deal with pelagic and demersal diets indifferently. Additionally, it shows the need of a sampling strategy to precisely detect possible differences in the diets as far as cod distribution in the water column is concerned.

ACKNOWLEDGMENTS

This work was supported by the Norwegian Fisheries Research Council.

REFERENCES

- Antipova, T., Yaragina, N. 1984. Sravnetlnia chraktractika cuatechnia chod petania treske i pekchi Barensova Moria. Sbornek nauchnia trude Pinro: 3-11 (in Russian)
- Clark, T. A. 1987. Diel feeding patterns of 16 species of mesopelagic fishes from Hawaiian water. U. S. Fish. Bull. Vol.6:495-513
- Cochran, P., Adelman, I. 1982. Seasonal aspects of daily ration and diet of largemouth bass, *Micropterus salmoides*, with an evaluation of gastric evacuation rates. Env. Biol. Fish. Vol. 7: 265-275
- Daan, N. 1987 Multispecies versus single-species assesment of North Sea fish stocks. Can. J. Fish. Aquat. Sci. Vol. 44:360-370
- Durbin, E., Durbin, A., Langton, R. and Bowman, R. 1983. Stomach contents of silver hake, *Merluccius bilinearis*, and atlantic cod, *Gadus morhua*, and estimation of their daily rations. U. S. Fish.Bull. Vol.81:427-454
- Eggers, D. M. 1979. Comment on some recent methods for estimating food consumption by fish. J. Fish. Res. Board Can. 36:1018-1019
- Fritz, E. S. 1974. Total diet comparison in fishes by Spearman rank correlation coefficients. Copeia, No.1:210-214
- Mehl, S. 1986. Stomach contents of Northeast Arctic Cod and possible changes in the diet the last years. ICES., C. M. G:29
- _____ 1989. The Northeast Arctic Cod Stocks consumption of commercially exploited prey species in 1984 - 1986. Rapp. P.-V. Reun. Cons. Int. Explor. Mer., 188:185-205.
- Ponomarenko, I., Yaragina, A. 1978. Year-to-year and seasonal fluctuation in the feeding of the Barents Sea cod on capelin in 1947 - 1976. ICES, C. M. G:24
- Sainsbury, K. J. 1986. Estimation of food consumption from field observations of fish feeding cycles. J. Fish Biol. 29:23-26

Table.1 Stations, date, position and gear used from which cod stomach were sampled.

STATION	DATE	POSITION	GEAR
1	1/2-1986	70.22" 32.07"	demersal trawl
2	2/2-1986	70.20" 34.44"	=
3	2/2-1986	70.30" 37.06"	=
4	2/2-1986	70.34" 34.08"	=
5	1/2-1986	70.21" 33.40"	pelagic trawl
6	2/2-1986	70.52" 35.10"	=

Table.2 Comparison of the diet of Northeast Arctic cod collected by demersal and pelagic trawl from February 1986 (% occ = percentage frequency, % N = percentage of number and % W = percentage of stomach contents weight

Food Items	<u>demersal</u>			<u>Pelagic</u>		
	% occ	% N	% W	% occ	% N	% W
Polychaeta	0	0	0	8.6	2.44	.40
Crustacea	4.8	3.23	.19	0	0	0
Malacostraca	19.8	12.90	3.46	0	0	0
Isopoda	4.8	3.23	7.47	0	0	0
Hyperiididae	0	0	0	25.9	41.47	.40
Amphipoda	4.8	3.23	.22	0	0	0
Euphausiidae	4.8	9.68	.49	21.6	18.29	.66
Pandalus borealis	13.3	5.40	6.07	13.0	3.66	2.78
Teleostei	38.1	25.81	41.08	56.5	24.39	44.65
Clupea harengus	4.8	3.23	15.34	26.6	7.32	47.94
Mallotus villosus	0	0	0	4.3	1.22	2.51
Sebastes sp.	23.8	29.03	23.95	4.3	1.22	.67
Indeterminatus	4.8	.00	1.73	0	0	0

demersal: number of stomach with food = 21; number of empty = 18; Mean stomach weight (Gr.) = 3.22

Pelagic: number of stomach with food = 23; number of empty = 1; Mean stomach weight (gr.) = 13.74

Table.3 Comparison of the diet of Northeast Arctic cod collected by demersal and pelagic trawls from February 1986 (% occ = percentage frequency, Nr = number of ranks)

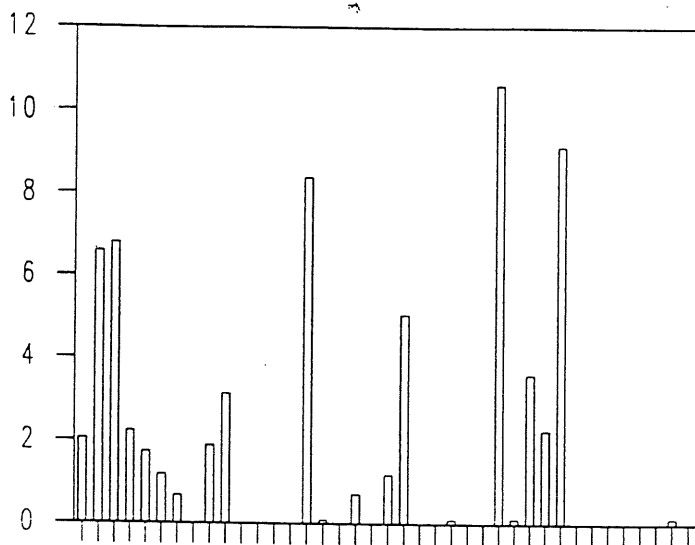
Food Items	<u>demersal</u>		<u>Pelagic</u>	
	% occ	rank	% occ	rank
Polychaeta	0	2	8.6	8
Crustacea	4.8	6.5	0	3
Malacostraca	19.8	11	0	3
Isopoda	4.8	6.5	0	3
Hyperiididae	0	2	25.9	11
Amphipoda	4.8	6.5	0	3
Euphausiidae	4.8	6.5	21.6	10
Pandalus borealis	13.3	10	13.0	9
Teleostei	38.1	13	56.5	13
Clupea harengus	4.8	6.5	26.6	12
Mallotus villosus	0	2	4.3	6.5
Sebastes sp.	23.8	12	4.3	6.5
Indeterminatus	4.8	6.5	0	3

Bottom n = 21

Pelagic n = 23;Nr = 13;rs = 0.109;t = 0.363;p > 0.1;df = 11

Figure 1.

Demersal



Pelagic

